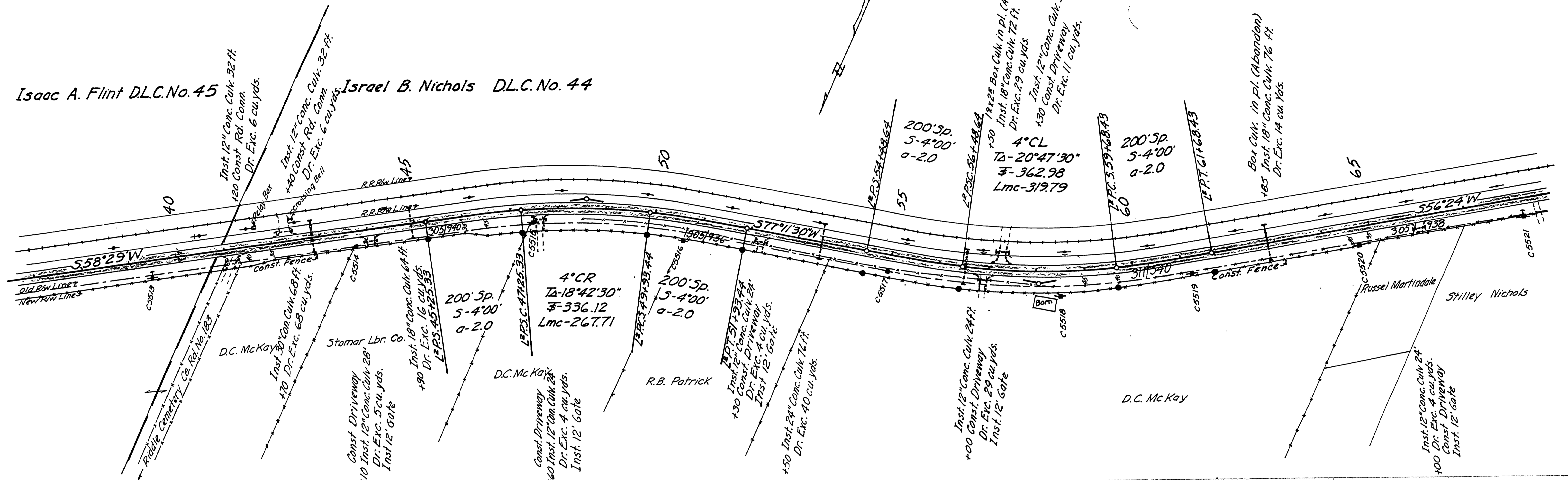


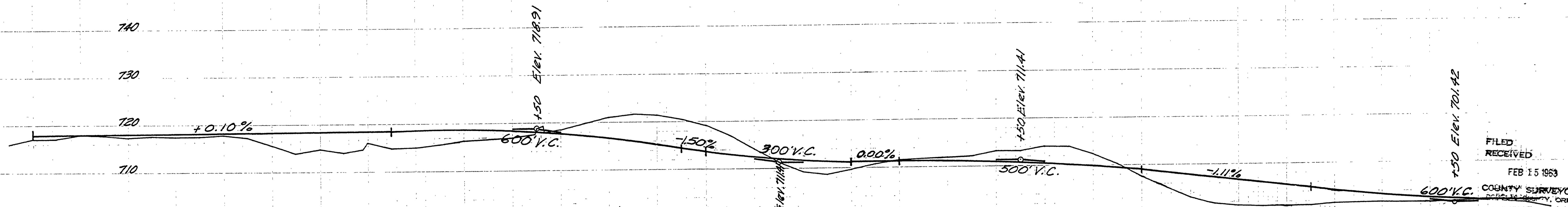
T.30S., R.6W.W.M.

Isaac A. Flint D.L.C. No. 45

Israel B. Nichols D.L.C. No. 44



Indicates 3/4 Iron Pins & 4x4 Posts.



FILED  
RECEIVED  
FEB 15 1963  
COUNTY SURVEYOR  
DOUGLAS COUNTY, OREGON

Exc. 168 C.Y.	Exc. 1694 C.Y.	Exc. 87 C.Y.	Exc. 3,398 C.Y.
Emb. 620 C.Y.	Emb. 1444 C.Y.	Emb. 79 C.Y.	Emb. 3,096 C.Y.
Emb. 153 C.Y.	Exc. 627 C.Y.	S.O.H. 975 Yd. Stas	
Emb. 1,819 C.Y.	Exc. 3,992 C.Y.	S.O.H. 23,952 Yd. Stas	LOH. 199' Yd. Stas to sta 62+20
Emb. 2,484 C.Y.			Emb. 571 C.Y.
			to sta 71+20

DOUGLAS COUNTY, OREGON  
Riddle By Pass Co. Rd. No. 263  
Twp. 30 S. Rge 6 W.  
Section 23 July, 1961  
Sheet 1 of 8  
Scales: Map: 1"=100'  
Profile Horiz. 1"=100'  
Vert. 1"=10'  
A.H. May County Engr.

00760135