

GENERAL SERVICES DIVISION
 FEDERAL HOUSING ADMINISTRATION
 CLOVERDALE ADDITION - ROSEBURG, OREGON
 SCHEDULE 6
 LATERALS 'A' & 'B-1'
 MAIN: STA. 13+00 TO 17+71

SCALE: AS NOTED	DATE: MARCH 2, 1957	SHEET 2 OF 6
DES. DWG. DR. A.L.S. CK.	CORNELL, HOWLAND, HAYES & MERRYFIELD CORVALLIS, OREGON ENGINEERS	BOISE, IDAHO C 137-4 G.S.W. 12/29

FILED
 RECEIVED
 COUNTY SURVEYOR
 DOUGLAS CLAY

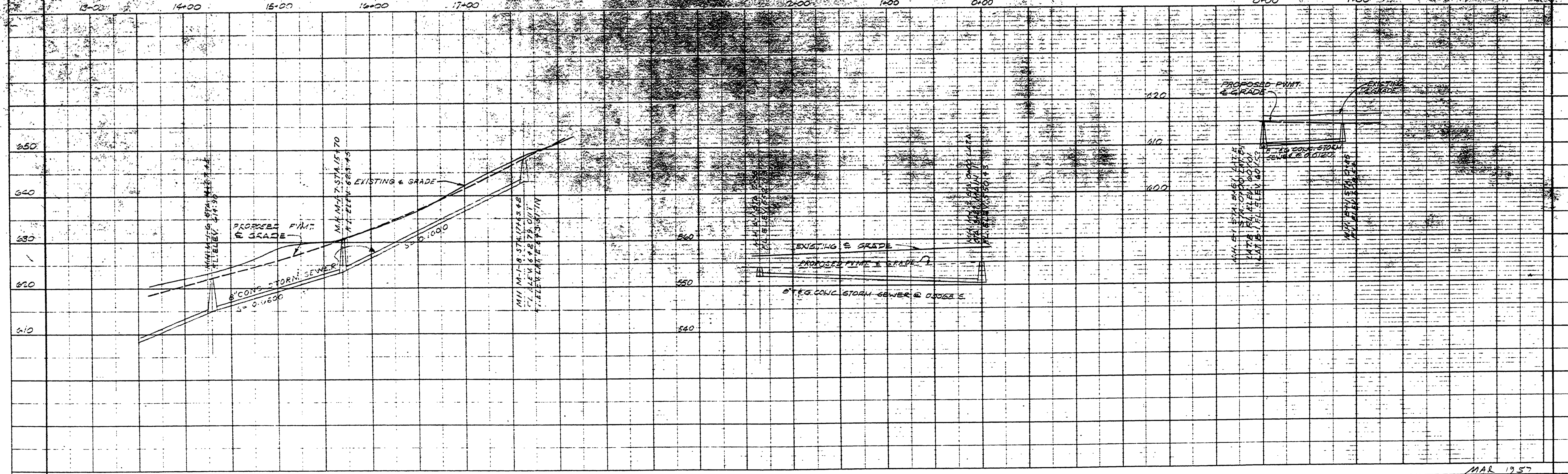
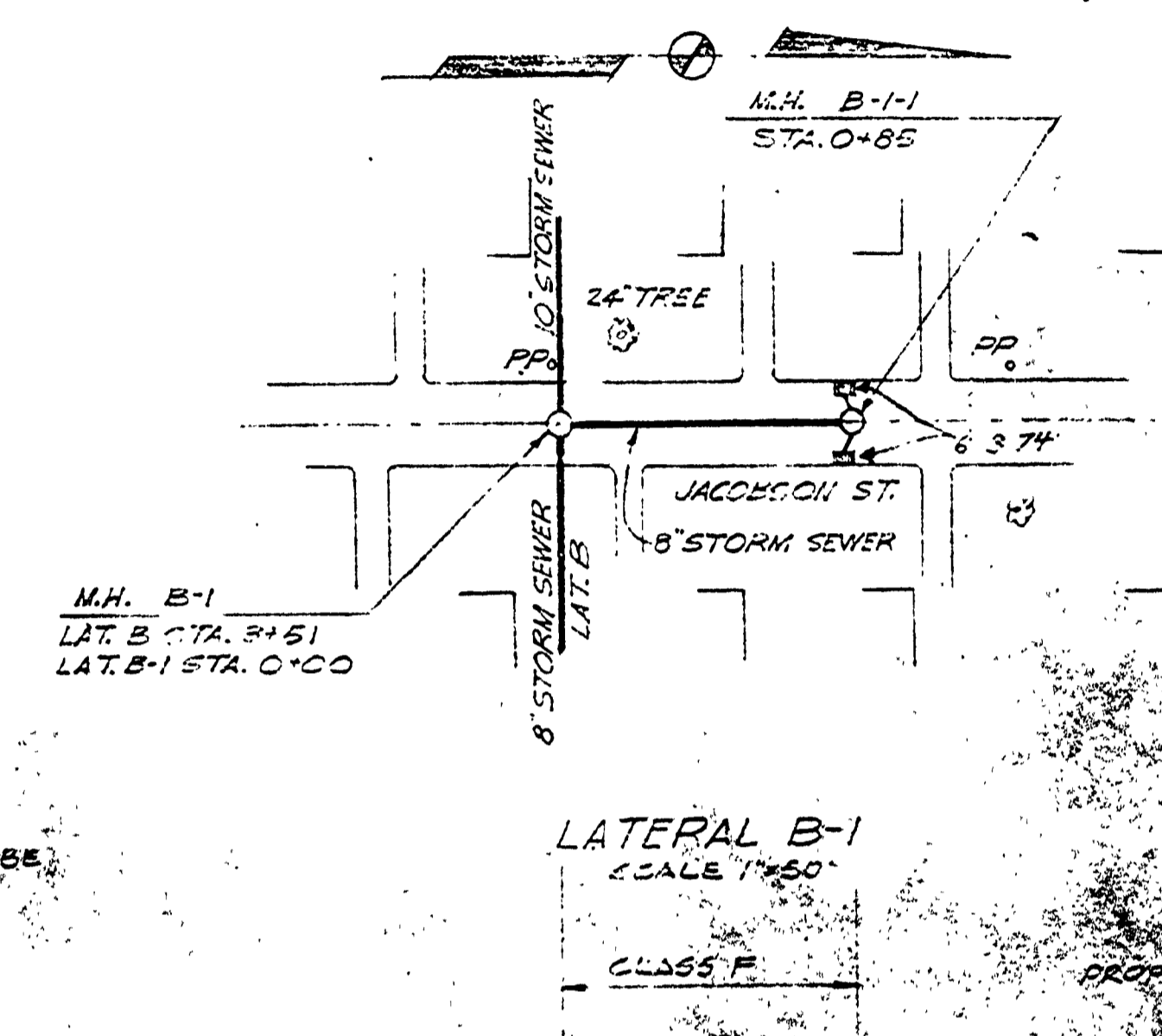
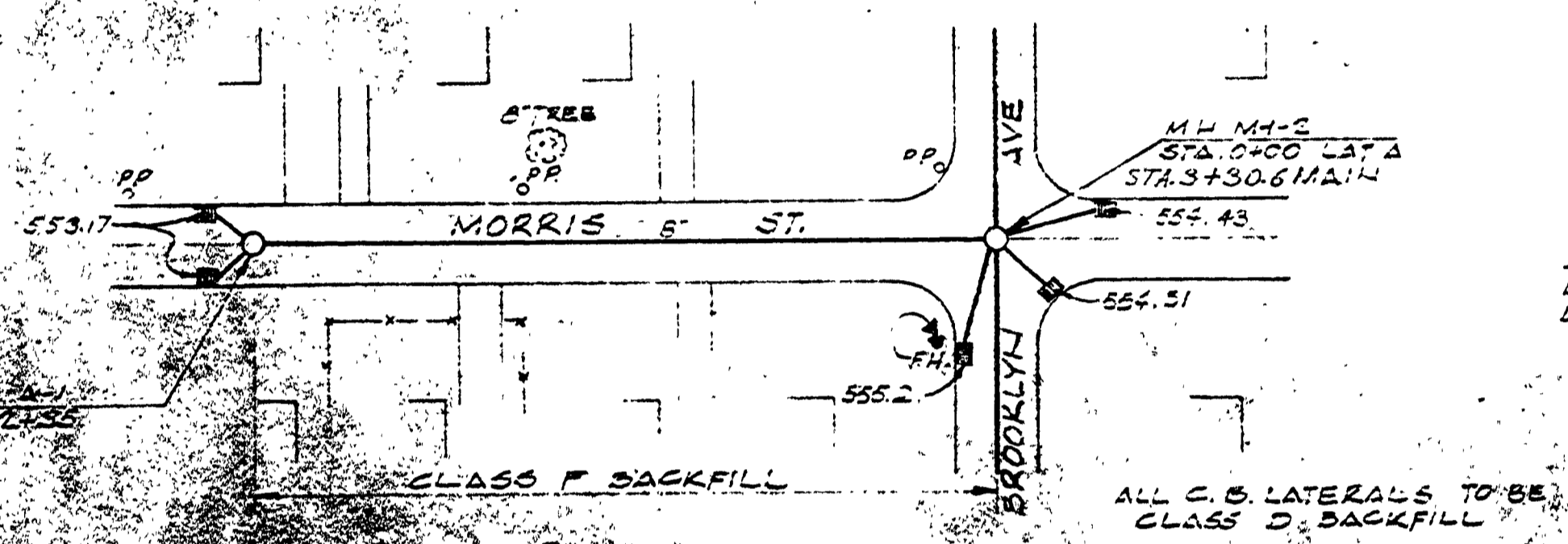
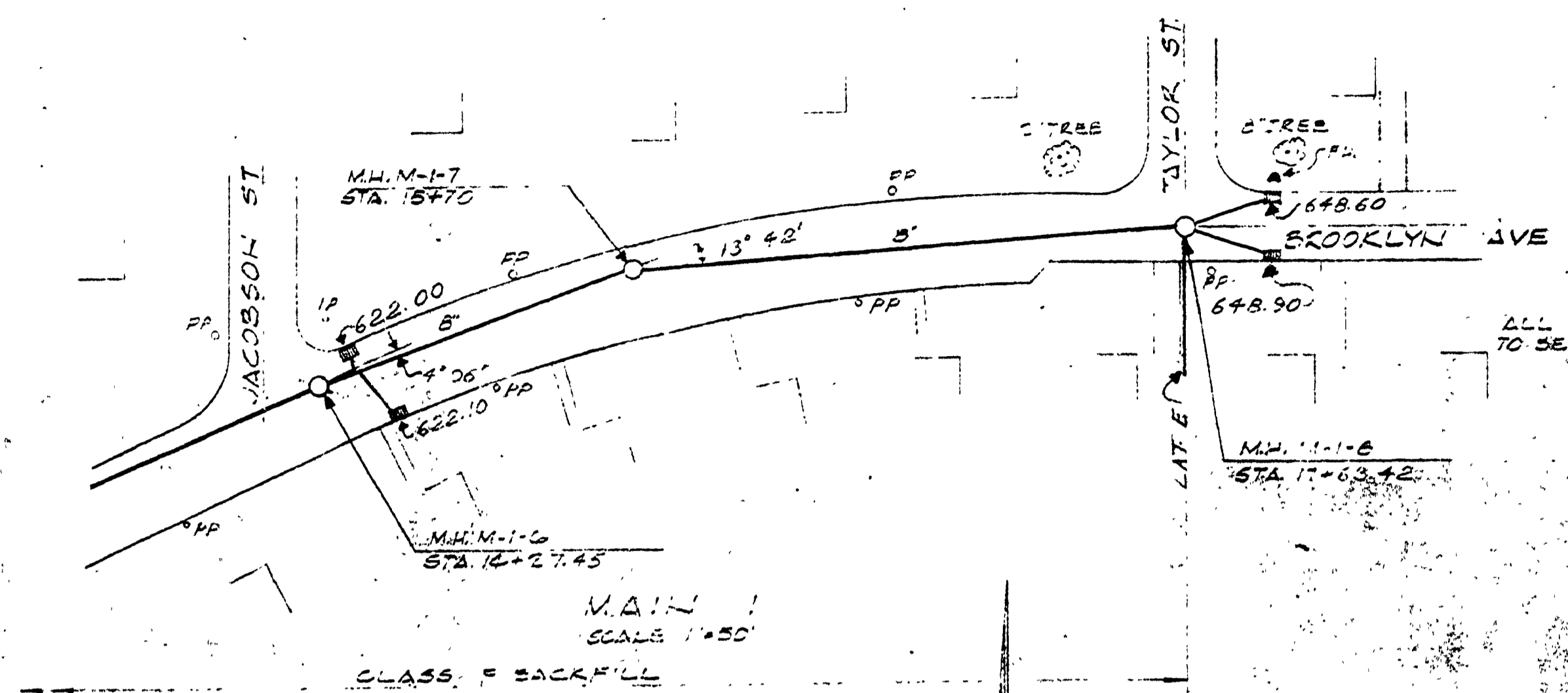


PLATE 7-PAN-PROFILE B & B STANDARD
 1/4\"/>

M.P. 0.28 - 0.35

G.R. #262
 Sheet 15 of 19
 MAR 19 1957

00280035