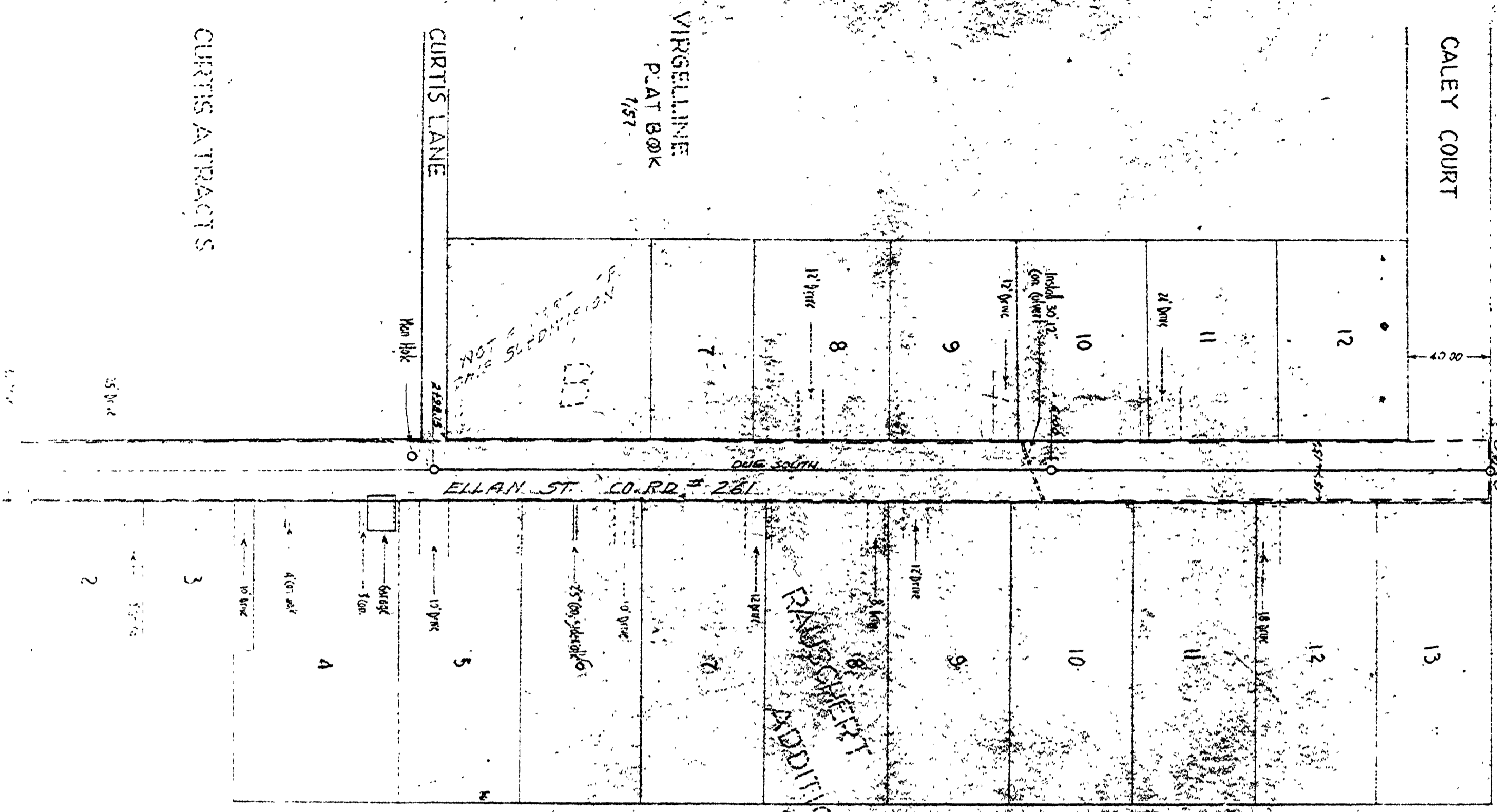


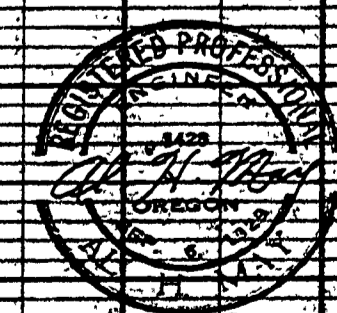
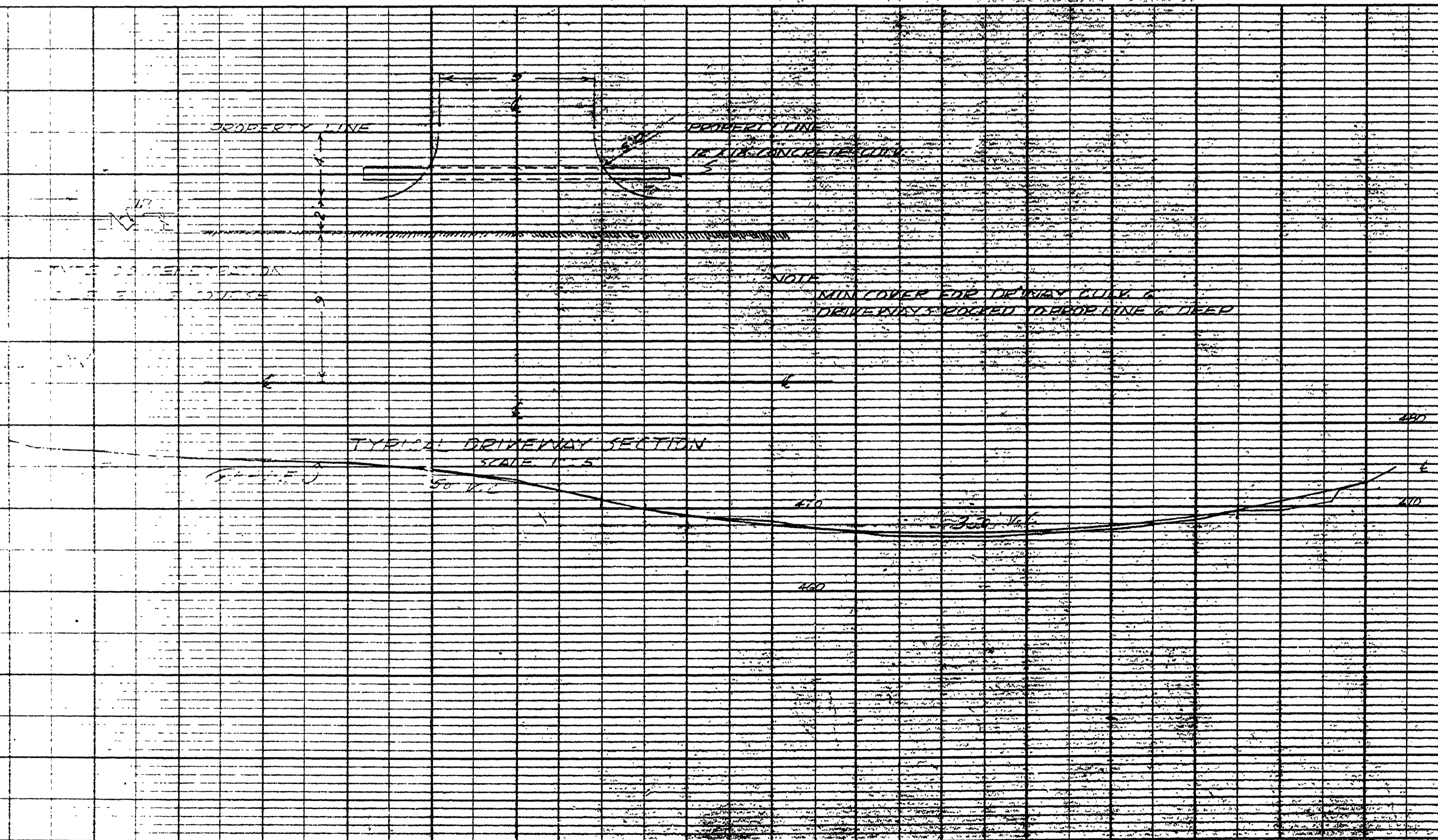
FILED & RECEIVED
 OCT 20 1960
 COUNTY SURVEYOR
 DOUGLAS COUNTY, ORE.

PLAN
 SUBMITTED BY
 PLANNED BY
 DATE OF PLAN
 NO.



ELLAN STREET DEDICATED IN RAUSCHERT ADDITION AS
 RECORDED IN VOL 6 PAGE 24 OF THE DOUGLAS
 COUNTY PLAT RECORDS, ADOPTED BY RESOLUTION
 OF THE COUNTY COURT SHOWN THUS — — — — Oct 19, 1960
 V. T. Jackson COUNTY JUDGE
 James M. Clough COUNTY COMM.
 E. R. Metzger COUNTY COMM.

PROFILE
 SURVEYED BY
 PLOTTED BY
 DATE OF PROFILE
 NO.



DOUGLAS COUNTY, OREGON
 ELLAN STREET CO. RD. # 281
 SEC. 3
 RING. 6W
 SHEET 101
 SCALE
 MAP 1" = 50'
 PROFILE 1" = 10'
 VERT. 1" = 10'
 A. H. MAY COUNTY ENGINEER