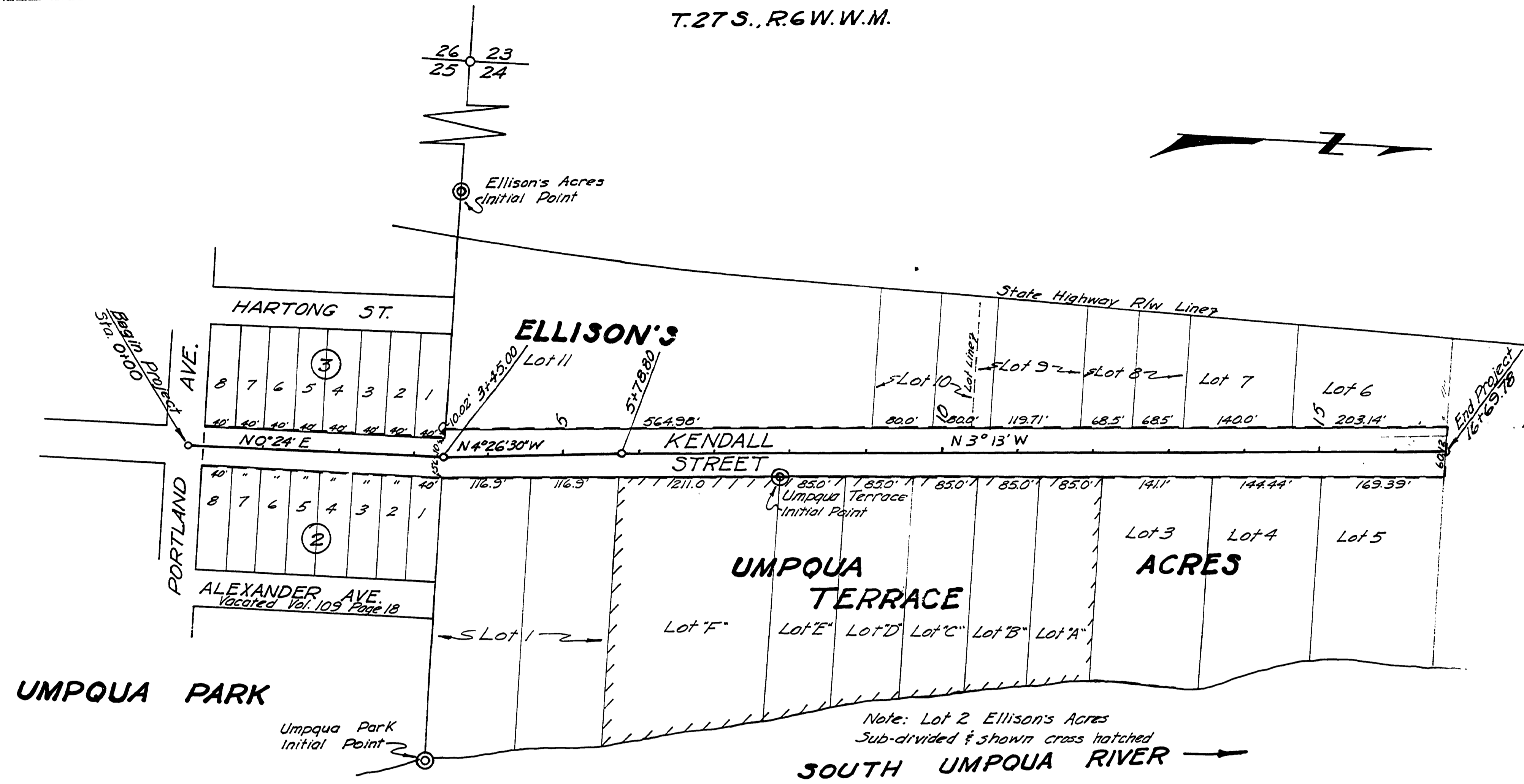
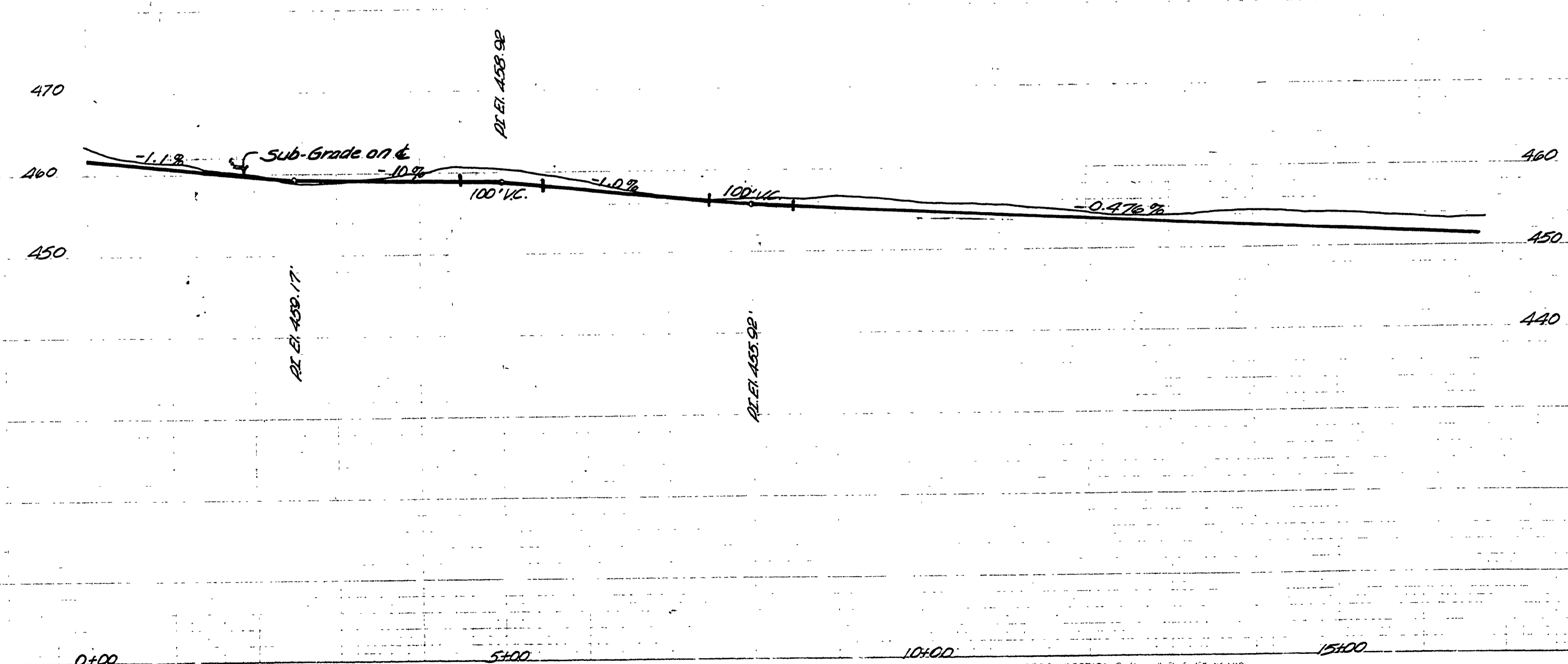


T.27S.,R.6W.W.M.



Kendall Street dedicated in Ellison's Acres Subdivision Vol. 7 Page 41 and that part of said Street lying North of Portland Ave. dedicated in Umpqua Park Vol. 3 Page 1 of the Douglas County Plat Records Adopted by Resolution of the County Court. Limits shown thus March 12 1962

V. T. Jackson County Judge  
E. ... County Comm.  
R. ... County Comm.



FILED RECEIVED  
 FEB 15 1963  
 COUNTY SURVEYOR  
 DOUGLAS COUNTY, ORE.

**DOUGLAS COUNTY, OREGON**  
 Kendall Street County Rd. No. 260  
 Twp. 27 S. Rge. 6 W.  
 Secs. 24 & 25 Sheet 1 of 1  
 Scales: August 1960  
 Horiz. 1" = 100'  
 Vert. 1" = 10'  
 A. H. May County Engineer