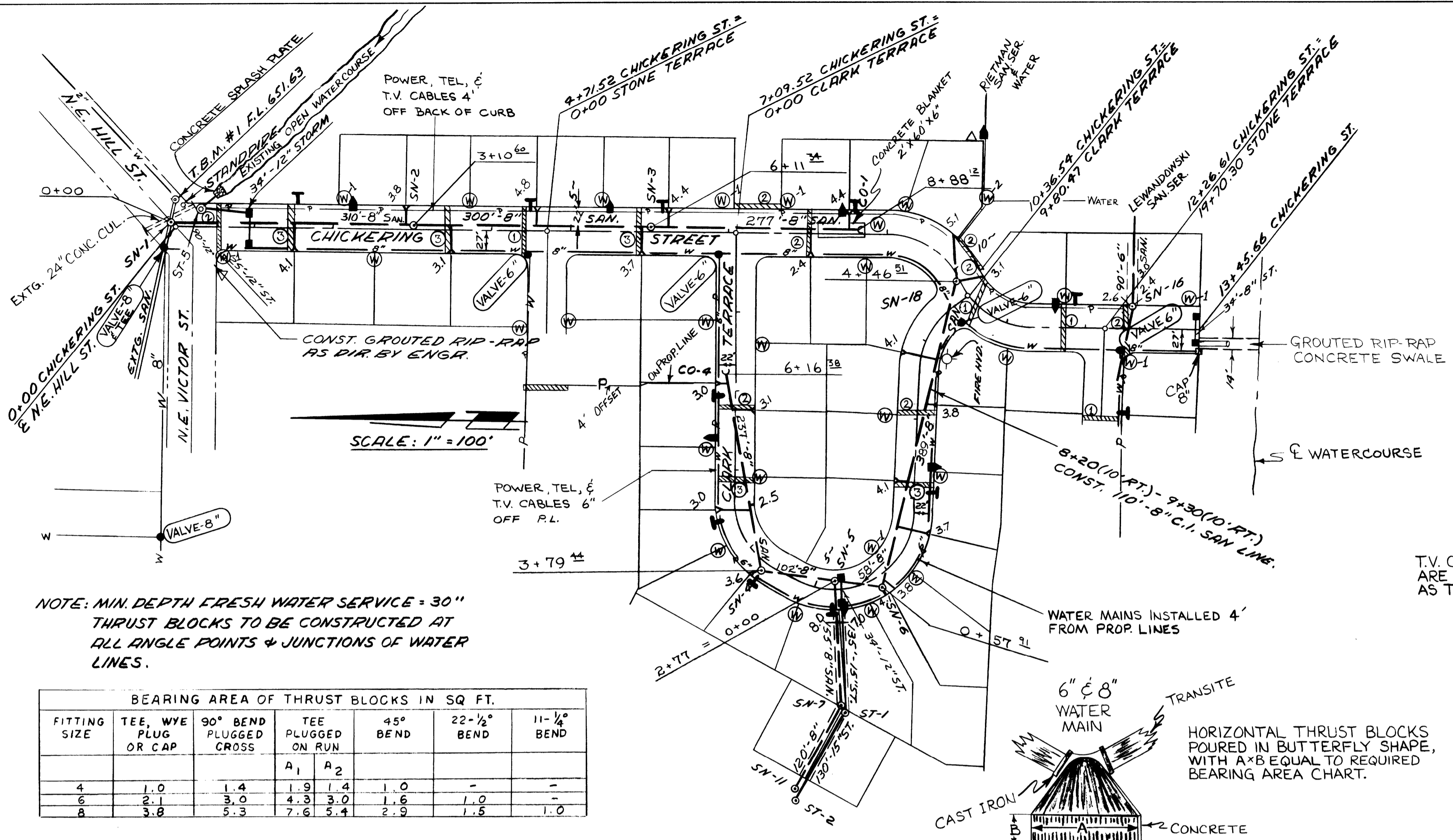


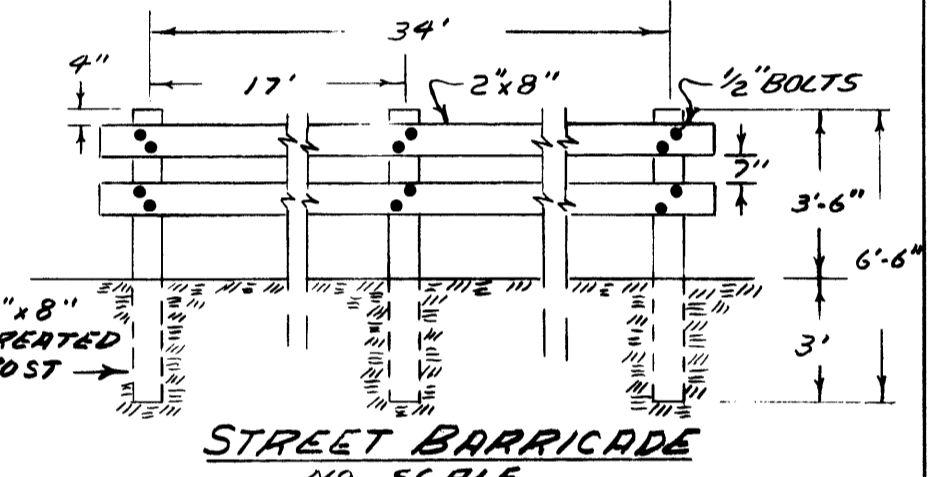
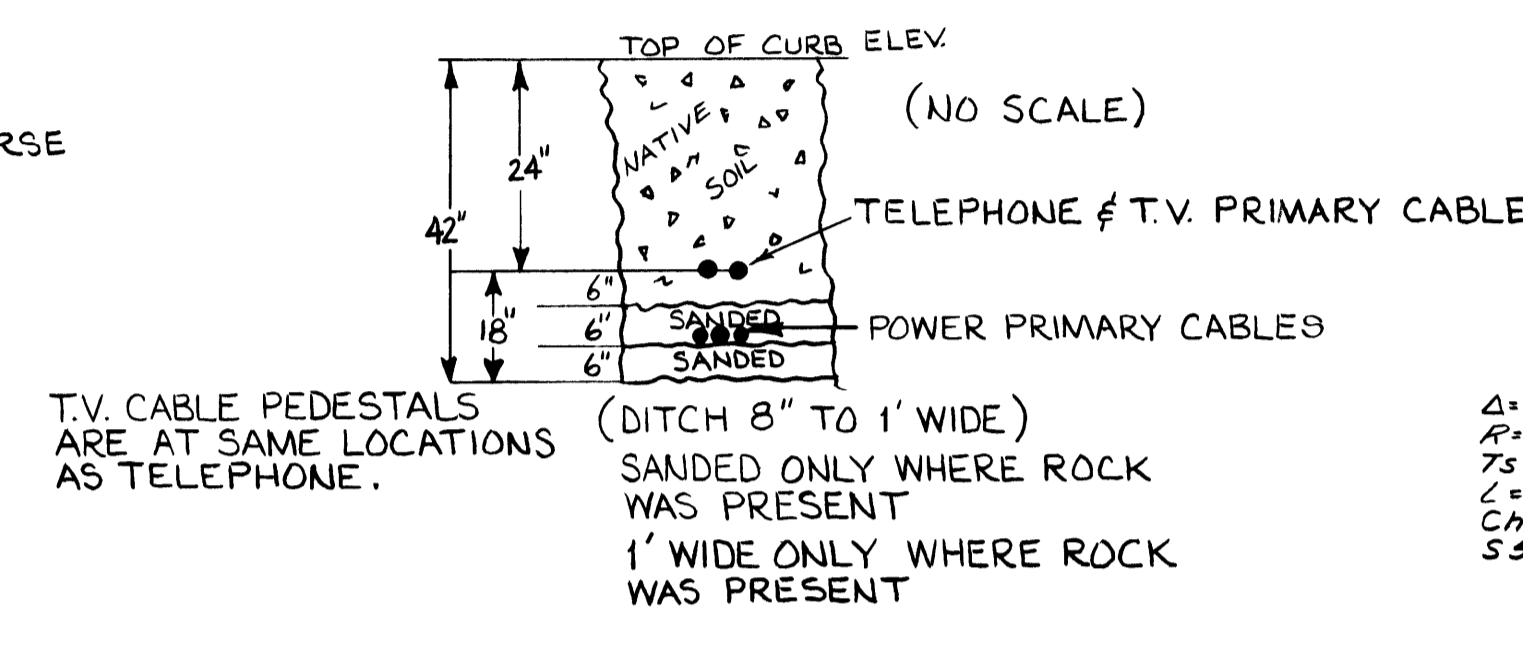
A = 64°49'47"  
 R = 100.0'  
 TS = 63.50'  
 L = 113.15'  
 CS = 107.21'  
 S = 33°05'26"W

A = 52°10'53"  
 R = 100.00'  
 TS = 44.35'  
 L = 51.04'  
 CS = 87.73'  
 S = 61°36'45"E

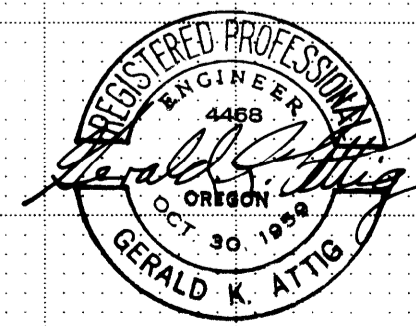
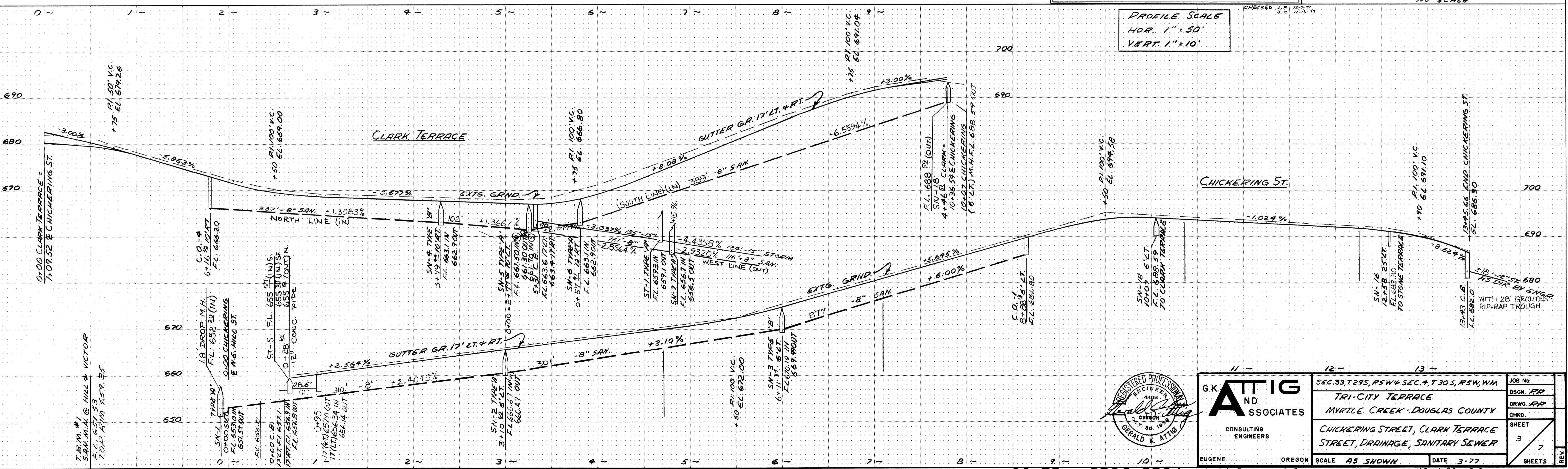
A = 116°39'58"  
 R = 100.0'  
 TS = 161.84'  
 L = 203.42'  
 CS = 170.14'  
 S = 29°24'43"E



BEARING AREA OF THRUST BLOCKS IN SQ. FT.						
FITTING SIZE	TEE, WYE PLUG OR CAP	90° BEND PLUGGED CROSS	TEE PLUGGED ON RUN	45° BEND	22-1/2° BEND	11-1/4° BEND
			A <sub>1</sub> A <sub>2</sub>			
4	1.0	1.4	1.9 1.4	1.0	-	-
6	2.1	3.0	4.3 3.0	1.6	1.0	-
8	3.8	5.3	7.6 5.4	2.9	1.8	1.0



AS CONSTRUCTED



G.K. ATTIG AND ASSOCIATES  
 CONSULTING ENGINEERS  
 EUGENE, OREGON

SEC. 33, T. 29S, R. 5W & SEC. 4, T. 30S, R. 5W, W.M.	JOB No.
TRI-CITY TERRACE	DSGN. RR
MYRTLE CREEK - DOUGLASS COUNTY	DRWG. RR
CHICKERING STREET, CLARK TERRACE	CHRD.
STREET, DRAINAGE, SANITARY SEWER	SHEET 3
EUGENE, OREGON	DATE 3-77
SCALE AS SHOWN	SHEETS 7