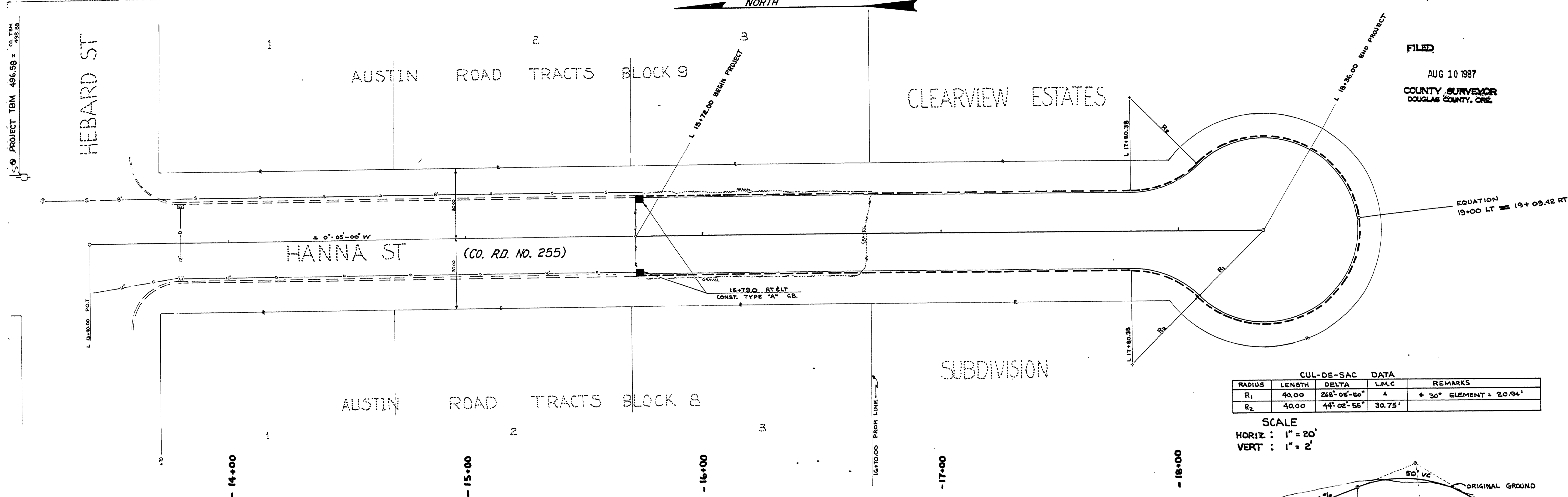


NORTH



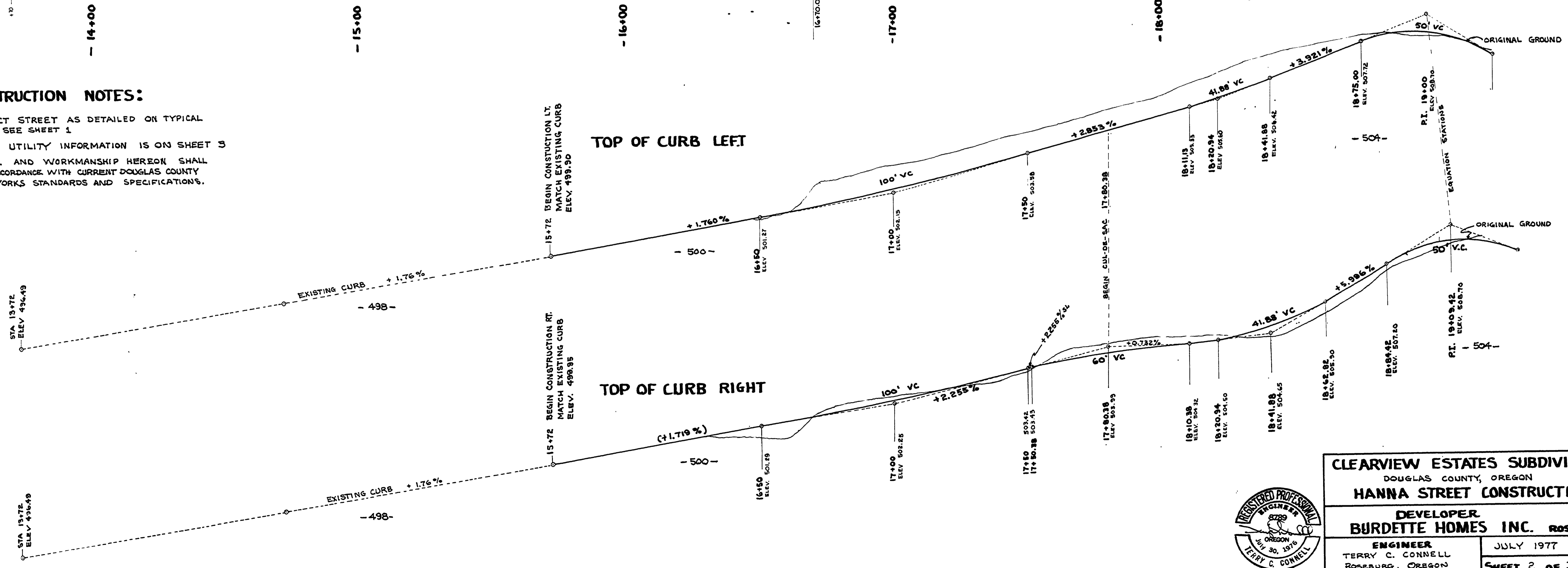
FILED
AUG 10 1987
COUNTY SURVEYOR
DOUGLAS COUNTY, ORE.

CUL-DE-SAC DATA				
RADIUS	LENGTH	DELTA	L.M.C.	REMARKS
R ₁	40.00	268° 06' 50"	A	* 30° ELEMENT = 20.94'
R ₂	40.00	44° 02' 55"	30.75'	

SCALE
HORIZ : 1" = 20'
VERT : 1" = 2'

CONSTRUCTION NOTES:

1. CONSTRUCT STREET AS DETAILED ON TYPICAL SECTION. SEE SHEET 1
2. DETAILED UTILITY INFORMATION IS ON SHEET 3
3. MATERIAL AND WORKMANSHIP HEREON SHALL BE IN ACCORDANCE WITH CURRENT DOUGLAS COUNTY PUBLIC WORKS STANDARDS AND SPECIFICATIONS.



CLEARVIEW ESTATES SUBDIVISION DOUGLAS COUNTY, OREGON HANNA STREET CONSTRUCTION	
DEVELOPER BURDETTE HOMES INC. ROSEBURG, OR	
ENGINEER TERRY C. CONNELL ROSEBURG, OREGON	JULY 1977 SHEET 2 OF 3 SHEETS

CO. RD. NO. 255 S. 10, T. 28S, R. 6W.

00290034