

FOLLETT ST.

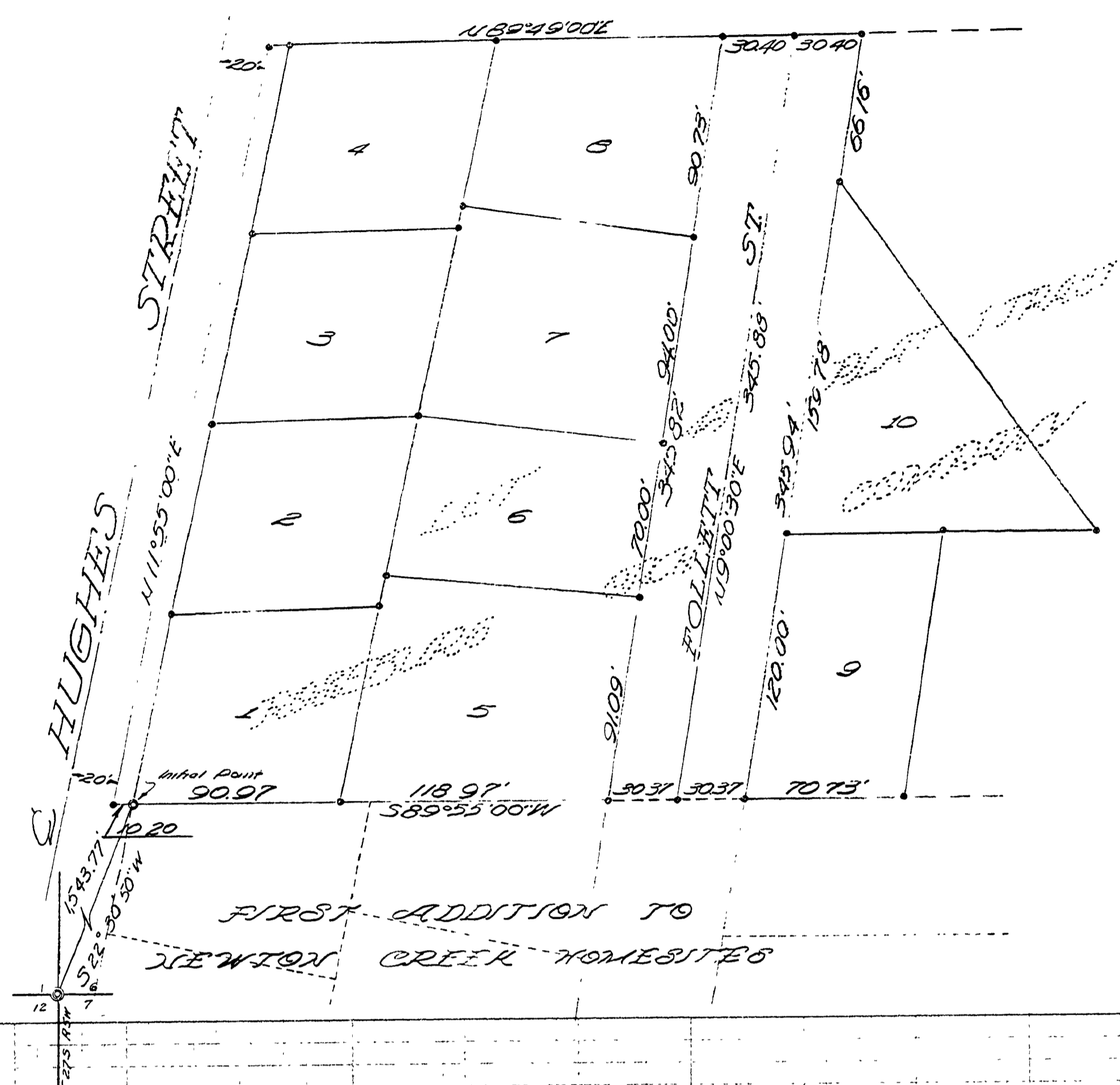


VIERRA

Sub. in Sec. 6, T. 27 S., R. 5 W. W. M.

HEIGHTS

July 1968 Scale 1" = 50'



"NOTE"

Follett St. accepted, but not built by Douglas County.
This drawing traced from plat by Glenn Boughtman,
recorded in Vol 13 Pg. 19, Plat Records of Douglas County, Oregon.

DATE	
BY	
FINAL SURVEY	SWAYED
NOTE BOOK	PLATING
	TEMPLE
	AREAS CHECKED
NO.	

DATE	
BY	
ORIGINAL SURVEY	SWAYED
NOTE BOOK	PLATING
	TEMPLE
	AREAS CHECKED
NO.	

FILED
RECEIVED
JUL 31 1968
COUNTY SURVEYOR
DOUGLAS COUNTY, OREGON

DOUGLAS COUNTY ROAD DEPT.
FOLLETT ST.
DATE - July 1968 SH 1 of 1
GEORGE F. GRUBB CO. ENG.

00120019