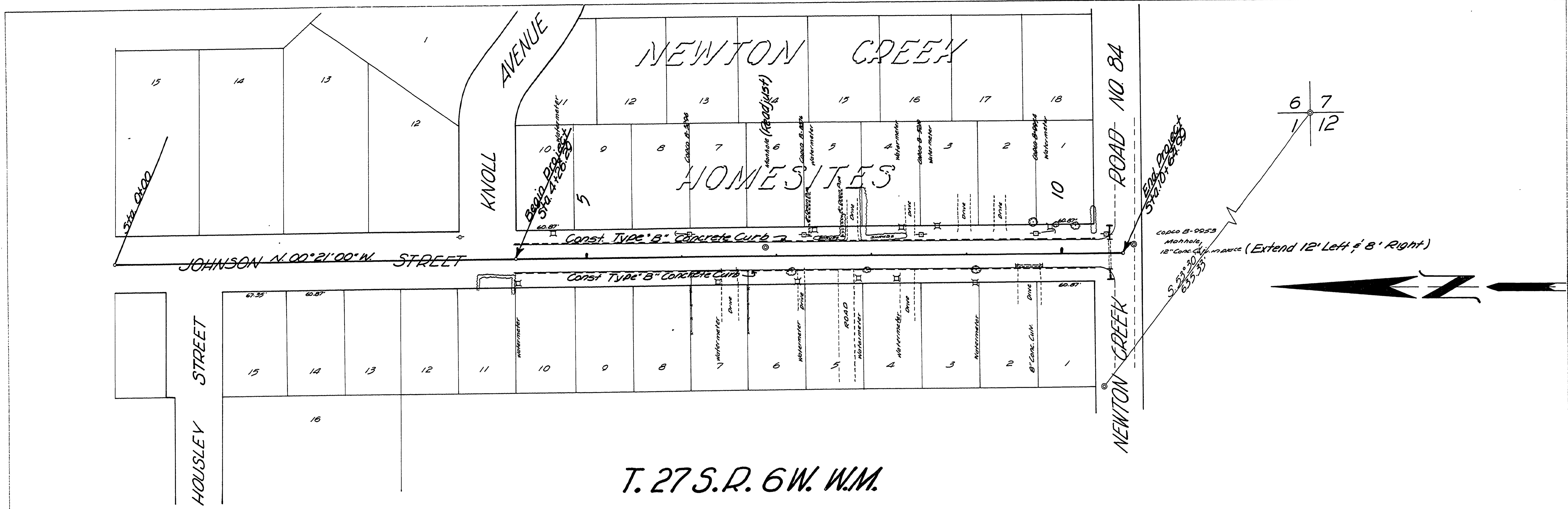
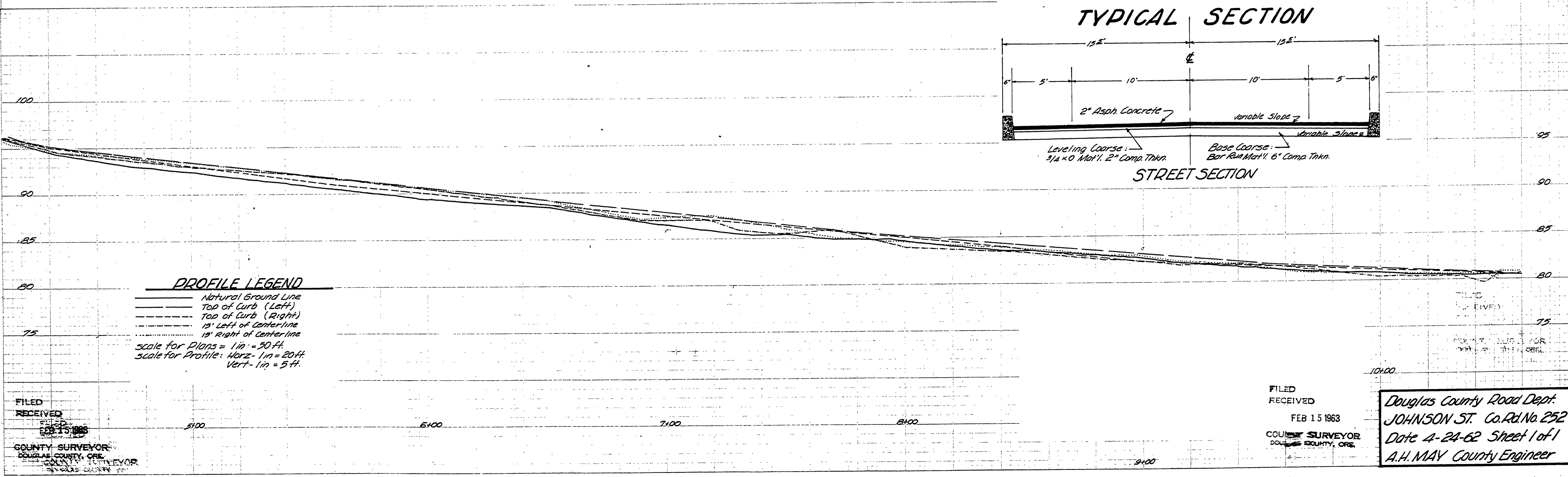
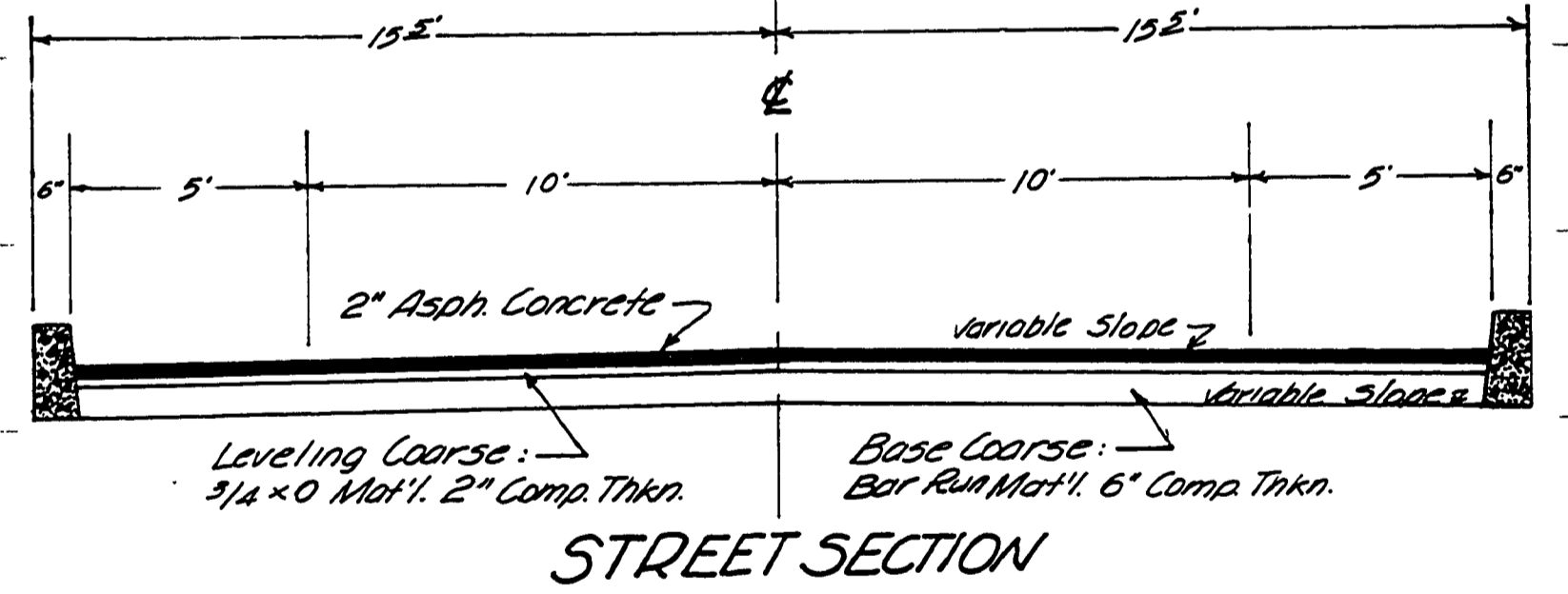


DATE
BY
FINAL SURVEY
REVISIONS
NO. DATE
BY
REVISIONS
DATE
BY
REVISIONS
DATE



T. 27 S. R. 6 W. W.M.

TYPICAL SECTION



FILED
RECEIVED
FEB 15 1963

COUNTY SURVEYOR
DOUGLAS COUNTY, ORE.

FILED
RECEIVED
FEB 15 1963

COUNTY SURVEYOR
DOUGLAS COUNTY, ORE.

Douglas County Road Dept.
JOHNSON ST. Co. Rd. No. 252
Date 4-24-62 Sheet 1 of 1
A.H. MAY County Engineer

M.P. 0.12 - 0.00

Co. Rd # 252A

4/24/62
Sht. 1 of 1

00120000