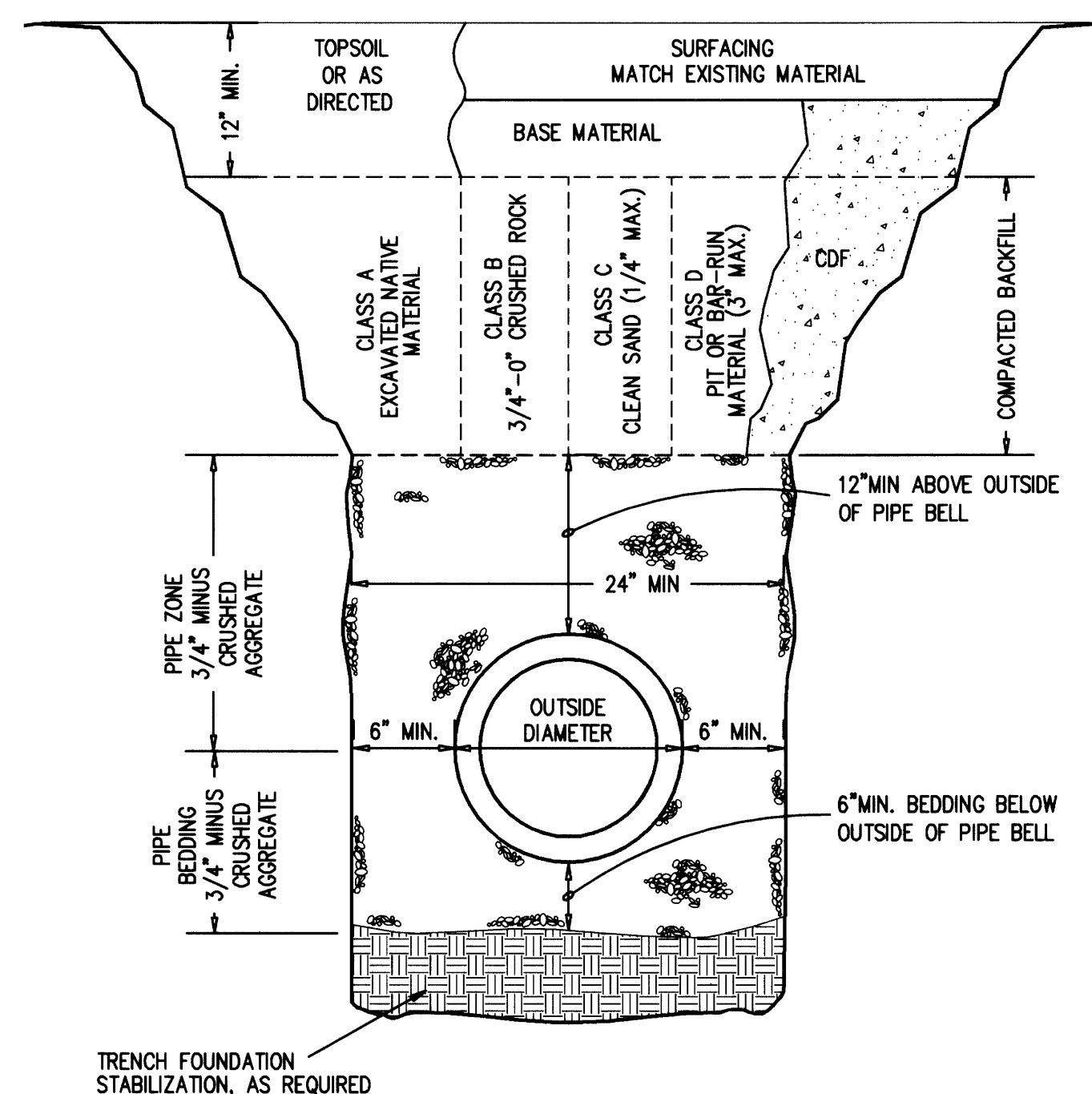
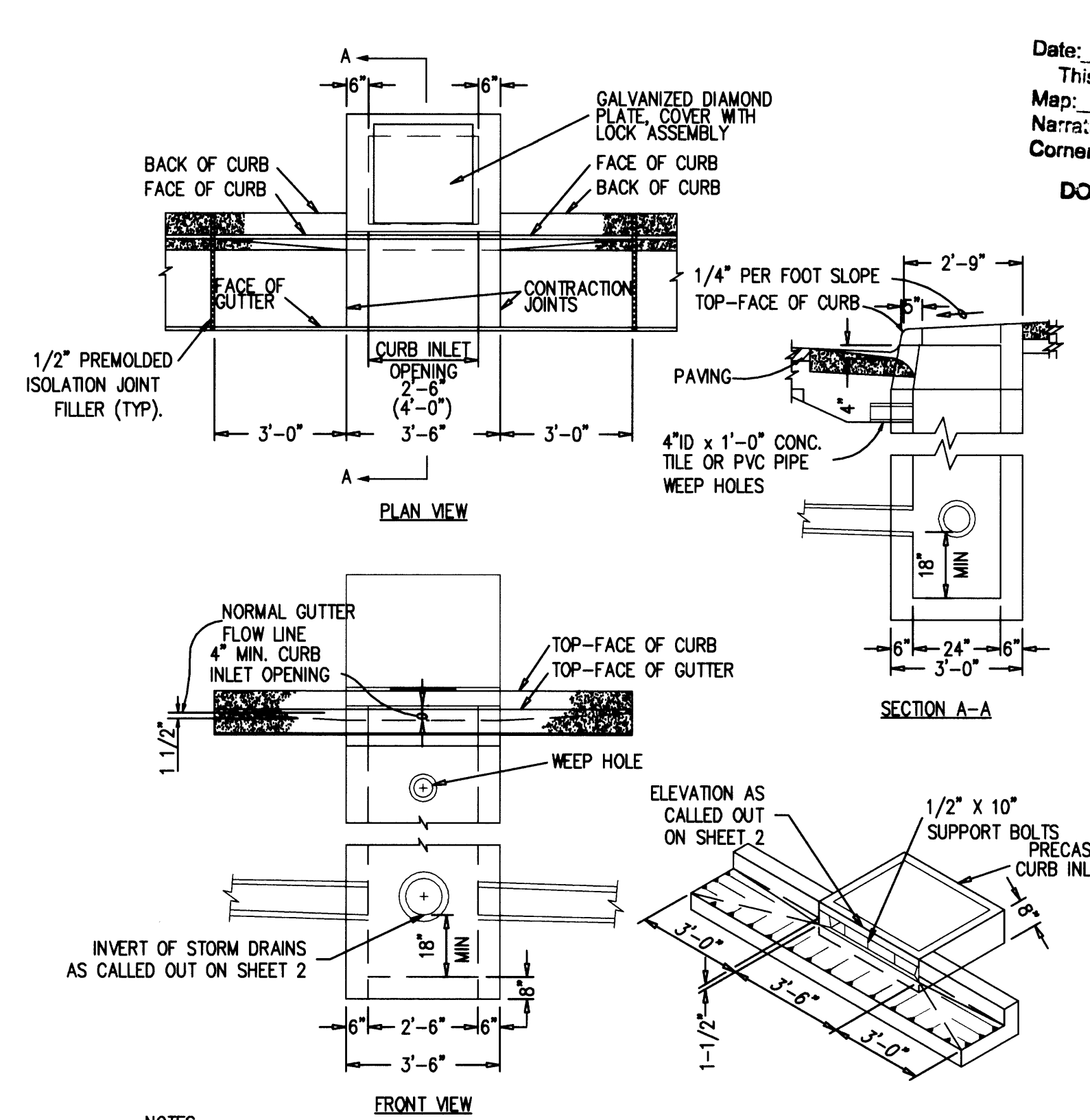


SCALE: 1"=20'

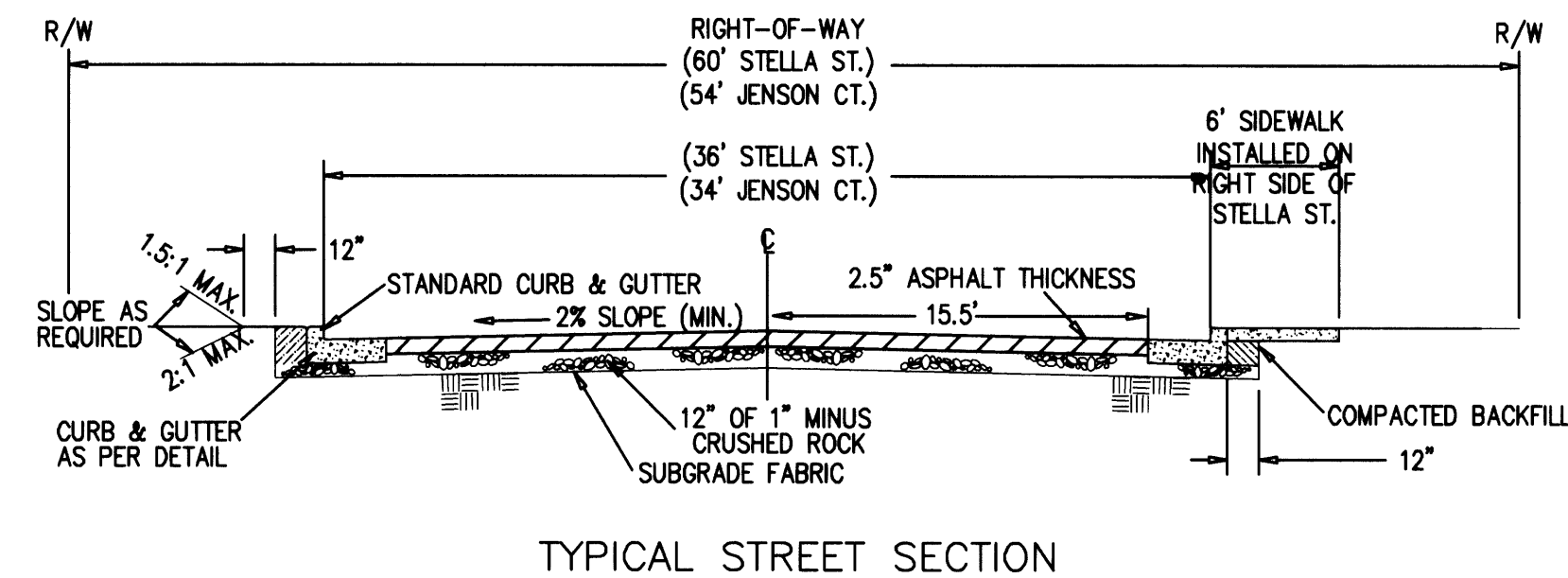


3 TRENCH BACKFILL, BEDDING, AND PIPEZONE
ST2 N.T.S.

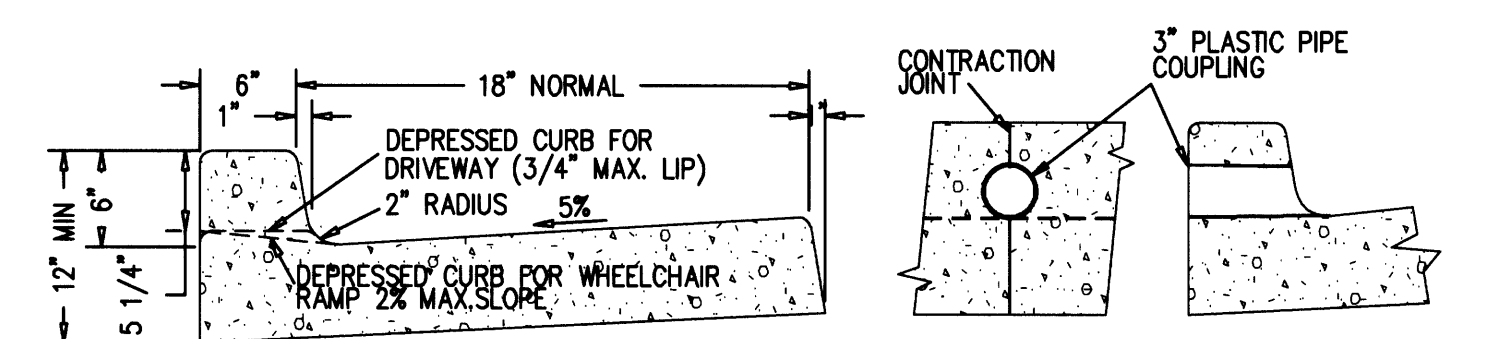


- NOTES:
- CURB INLET TOP AND BASE SHALL MEET H20 LOADING
 - CONCRETE STRENGTH SHALL BE 3000 PSI.
 - ALL FABRICATED METAL PARTS SHALL BE HOT-DIPPED GALVANIZED AFTER FABRICATION.
 - FOR STEEP GRADES USE STD. PRECAST INLET WITH 4'-0" OPENING OR TWO 2'-6" OPENING INLETS.
 - CURB INLET BASE MAY BE PRECAST OR CAST-IN-PLACE.

1 CURB INLET DETAIL
ST2 N.T.S.



TYPICAL STREET SECTION



TYPICAL CURB & GUTTER WEEP HOLE THROUGH CURB

- NOTES:
- ALL RADII SHALL BE 3/4" EXCEPT AS OTHERWISE SHOWN.
 - ISOLATION JOINTS SHALL BE PLACED ONLY AS SPECIFIED.
 - CONTRACTION JOINTS SHALL BE PLACED AT 15' INTERVALS AND SHALL EXTEND AT LEAST 50% THROUGH THE CURB OR CURB AND GUTTER.
 - A CONTRACTION JOINT SHALL BE PLACED ALONG AND OVER WEEP HOLE THROUGH THE CURB AND THROUGH THE SIDEWALK.

2 TYPICAL STREET, CURB, & GUTTER DETAIL
ST2 N.T.S.

FILED
Date: 3-7-2006 By: JC
This survey consists of:
Map: CO-ED-246C
Narrative: 3-9-06
Corner Rpt: 3-9-06
DOUGLAS COUNTY SURVEYOR

OWNER: ERIK HELENTHAL

PROJECT: ORCHARD MEADOWS ESTATES

SHEET TITLE: ROAD CROSS SECTIONS & DETAILS

REGISTERED PROFESSIONAL ENGINEER
53297
Vernon Miller
OREGON
JULY 9, 2001
Derek M. Miller
EXPIRATION DATE: 12/31/08

DATE: MAY 3, 2006
REV. #1: JUNE 23, 2006
REV. #2: JULY 12, 2006
REV. #3:
REV. #4:
REV. #5:

PROJ. #97-031
SHEET NO.
ST2 of 2