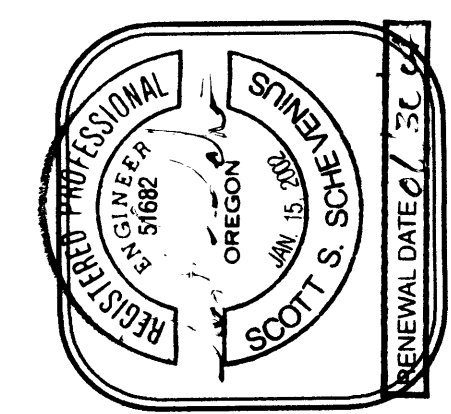


POST CONSTRUCTION DRAWINGS

THESE DRAWINGS REPRESENT THE CONSTRUCTION WORK AS NEAR AS CAN BE DETERMINED. THEY WERE PREPARED FROM INFORMATION GATHERED DURING CONSTRUCTION ACTIVITY BY THE CONTRACTORS AND INSPECTORS AND ARE THOUGHT TO BE ACCURATE. HOWEVER NO GUARANTEE OR WARRANTY IS EXPRESSED OR IMPLIED AS TO THEIR EXACTNESS AND THEY SHOULD BE USED ONLY AS A GENERAL REPRESENTATION OF THE CONSTRUCTION WORKS.



SURVEYING & ENGINEERING, INC.
 ENGINEERING, SURVEYING & PLANNING
 3076 NE DIAMOND LAKE BLVD.
 ROSEBURG, OREGON 97470
 TEL. (541) 672-2066
 FAX (541) 672-0811

AA

Revision	1	Date	07/09/03
Revision		Date	

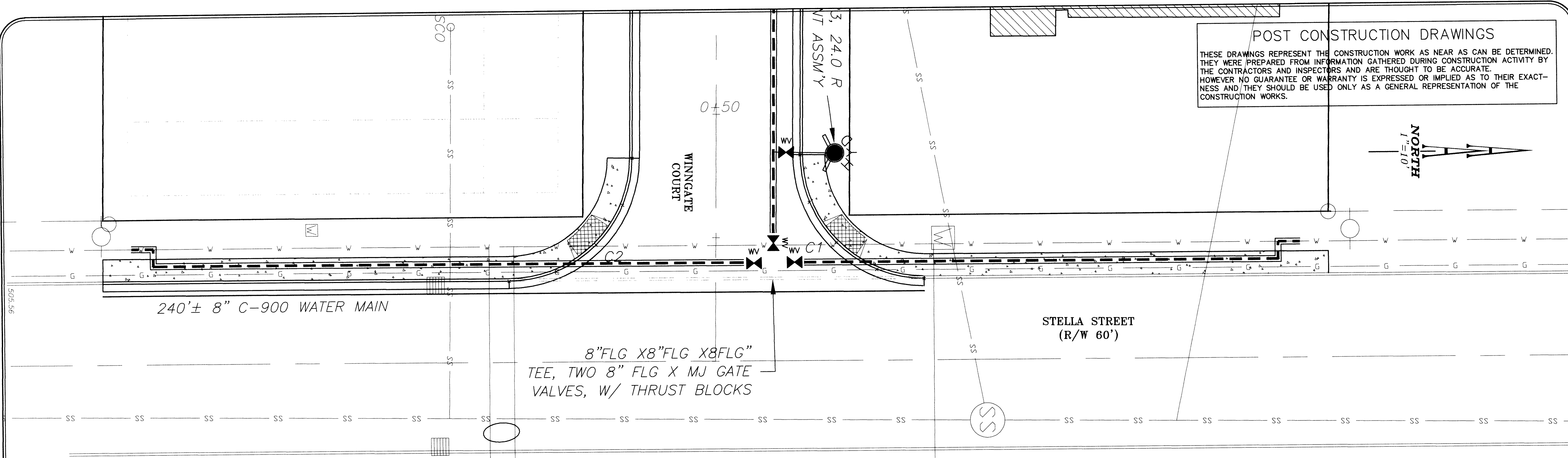
Drawn	STAFF
Design	SSS
Checked	SSS
Reviewed	SSS

AA PROJECT #6078.02 09/16/03

TITLE: **STELLA STREET & CUL-DE-SAC DETAILS**

PROJECT NAME: **WINGGATE SUBDIVISION GREEN DISTRICT, OREGON**

SHT.	4
OF	7



	R	BC	1/4	1/2	3/4	EC
C1	25'					
STA.	0+16.86	0+18.69	0+24.10	0+32.24	0+41.86	
OFF.	42.23'R	32.59'R	24.40'R	18.92'R	17.00'R	
EL. TFC	500.43	500.71	500.99	501.26	501.54	
C2	25'					
STA.	0+16.07	0+18.04	0+23.48	0+31.53	0+41.07	
OFF.	41.77'L	32.27'L	24.24'L	18.91'L	17.00'L	
EL. TFC	502.98	502.74	502.50	502.26	502.02	
C3	25'					
STA.	4+74.16		4+85.02		4+93.73	
OFF.	17.00'R		19.49'R		26.44'R	
EL. TFC	503.04		503.22		503.40	
C4	25'					
STA.	4+74.16		4+85.02		4+93.73	
OFF.	17.00'L		19.49'L		26.44'L	
EL. TFC	503.04		503.22		503.40	
C5	42.5'		N1/4	W1/4	S1/4	
STA.		5+27.00	5+69.50	5+27.00		
OFF.		42.50'R		42.50'L		
EL. TFC		504.03	504.44	504.03		

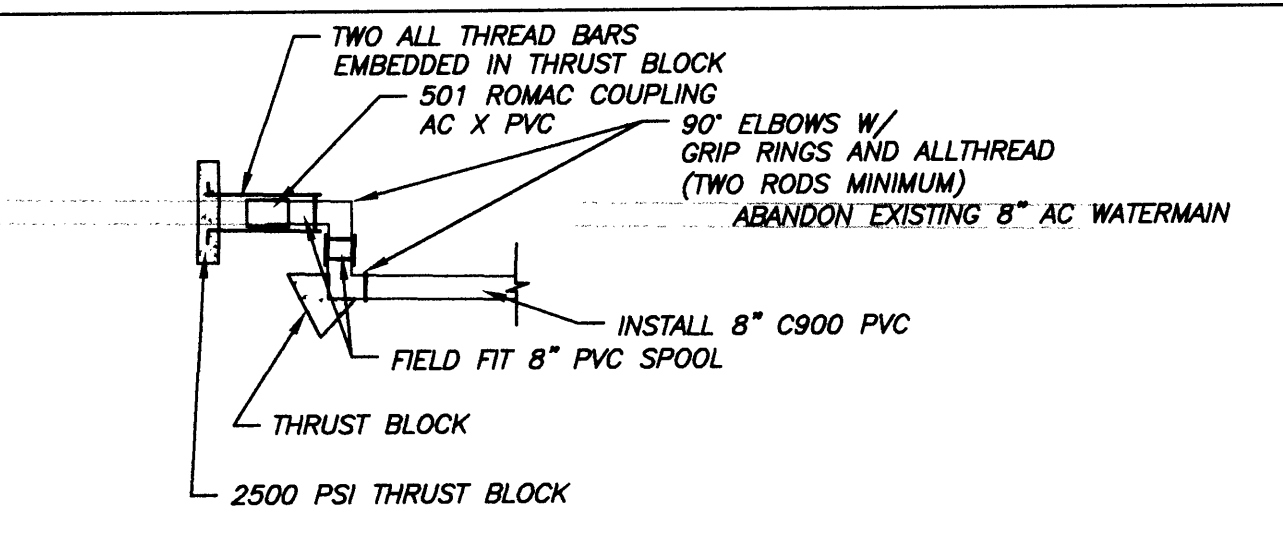
NOTE:
 Transition cross-slope for Winggate Court, (Left Side Only) between Sta. 0+41.07 (0%) to Sta. 0+90.00 (3.0%).

16' DRIVEWAY CURB-CUT SCHEDULE

LOT	STA.	OFF.	STA.	OFF.
01	See	Stella	Detail	
02	1+48.72	17.00'R	1+64.72	17.00'R
03	1+92.22	17.00'R	2+08.22	17.00'R
04	2+88.72	17.00'R	3+04.72	17.00'R
05	3+32.23	17.00'R	3+48.23	17.00'R
06	4+28.72	17.00'R	4+44.72	17.00'R
07	4+84.22	19.11'R	5+00.22	33.00'R
08	5+45.87	38.08'R	5+58.62	28.40'R
09	5+64.30	20.37'R	5+69.23	04.81'R
10	5+64.49	20.01'L	5+69.26	04.50'L
11	5+39.81	40.52'L	5+54.10	32.74'L
12	4+76.18	17.08'L	4+92.18	24.67'L
13	4+16.18	17.00'L	4+32.18	17.00'L
14	3+19.68	17.00'L	3+35.68	17.00'L
15	2+76.18	17.00'L	2+92.18	17.00'L
16	1+79.68	17.00'L	1+95.68	17.00'L
17	1+36.18	17.00'L	1+52.30	17.00'L
18	See	Stella	Detail	

LEGEND

	PROPOSED	SANITARY SEWER MANHOLE		EXISTING
	SANITARY SEWER		SS	
	SANITARY LATERAL		SL	
	CLEANOUT		CO	
	CATCH BASIN		CB	
	STORM DRAIN		SD	
	FIRE HYDRANT		FD	
	GATE VALVE		GV	
	WATER METER		WM	
	WATER LINE		WL	
	POWERPOLE		PP	
	TELEPHONE PEDASTAL		TP	



NOTE:
 TEMPORARY BLOW OFF EACH END OF NEW WATER MAIN FOR DISINFECTION, TESTING AND FLUSHING.
 PROTECT ALL-THREAD FOR REUSE ON 90° ELBOW.
 BACKFILL EACH SECTION OF NEW MAIN DURING INSTALLATION TO PROTECT EXISTING 8" AC WATER MAIN.
 CLEAN CUT EXISTING 8" AC FOR TIE-IN TO NEW MAIN.
 COORDINATE ALL WORK WITH ROWD.

MAIN LINE CONNECTION DETAIL
 N.T.S.

ATTENTION : OREGON LAW REQUIRES YOU TO FOLLOW RULES ADOPTED BY THE OREGON UTILITY NOTIFICATION CENTER. THOSE RULES ARE SET FORTH IN OAR 952-001-0010 THROUGH 952-001-0090. YOU MAY OBTAIN COPIES OF THE RULES BY CALLING THE CENTER AT 1-800-332-2344. CALL BEFORE YOU DIG.