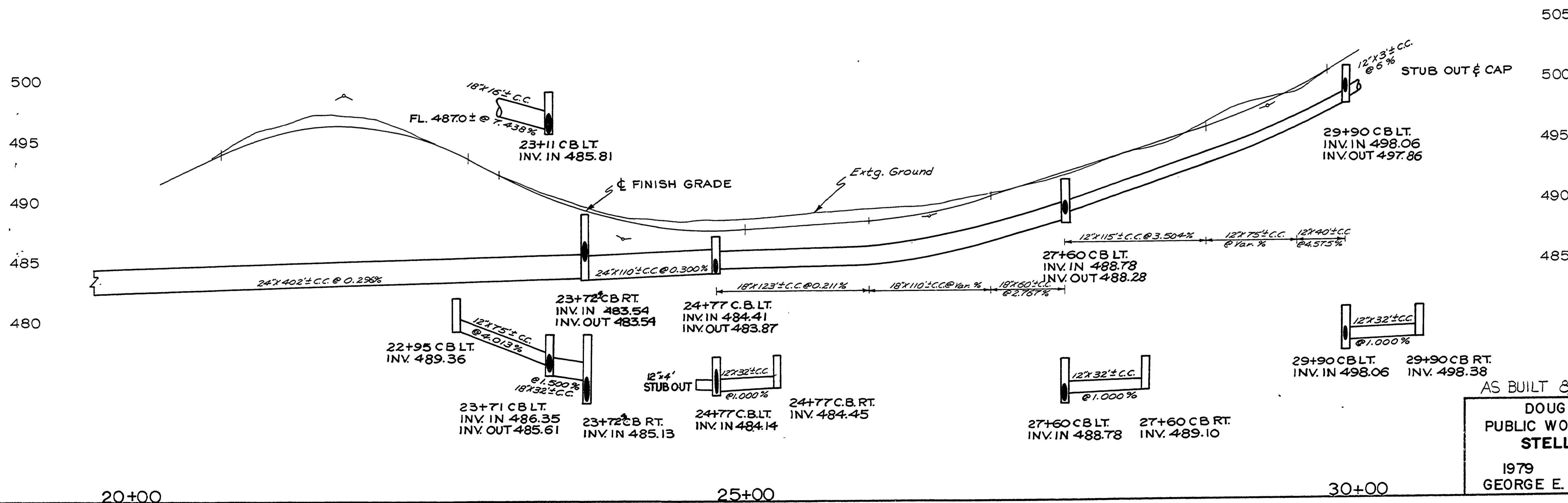
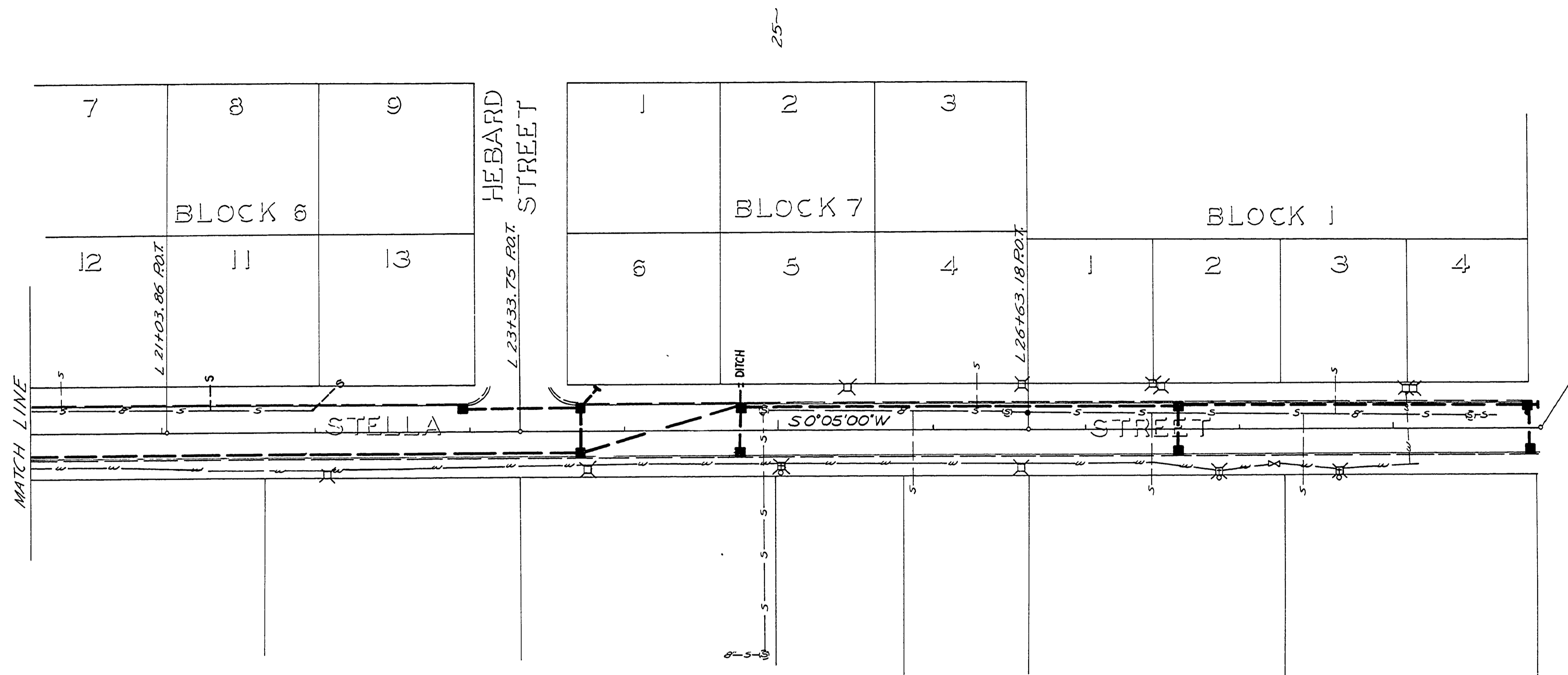


SEC. 10 T 28 S R 6 W W.M.

FILED  
 RECEIVED  
 AUG 1 1979  
 COUNTY SURVEYOR  
 DOUGLAS COUNTY, ORE.



AS BUILT 8/1/79 L.L.  
 DOUGLAS COUNTY  
 PUBLIC WORKS DEPARTMENT  
 STELLA STREET  
 1979 SHT. 6  
 GEORGE E. GRUBB, DIRECTOR

00250045

M.P. 0.25 - 0.44

1979  
 G. Rd # 246  
 Sht. 6 of 10