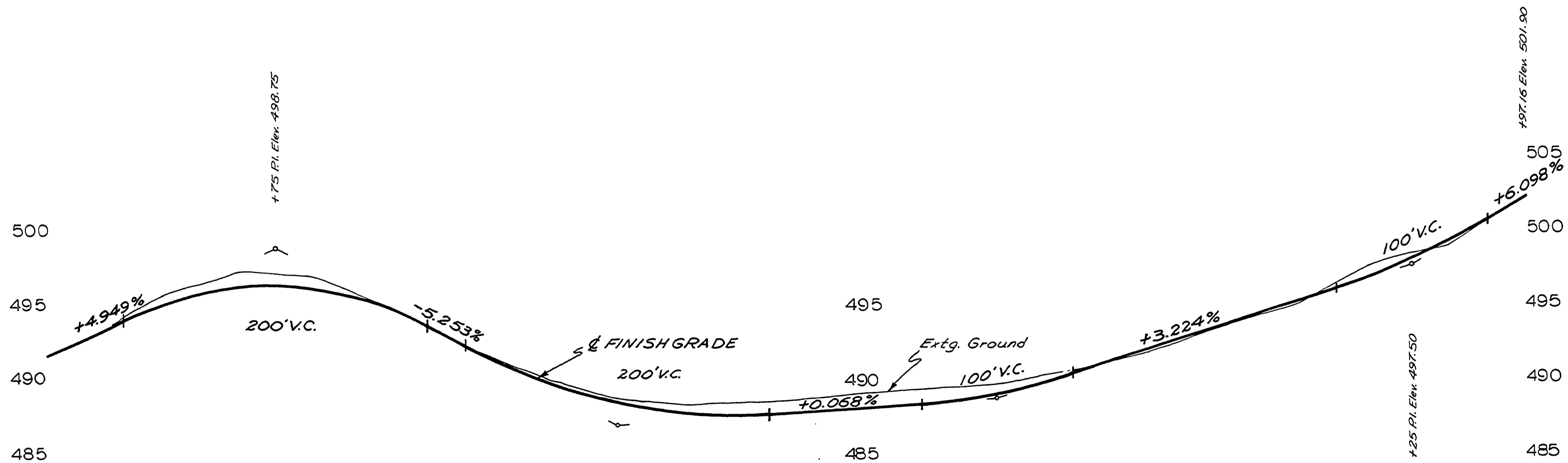
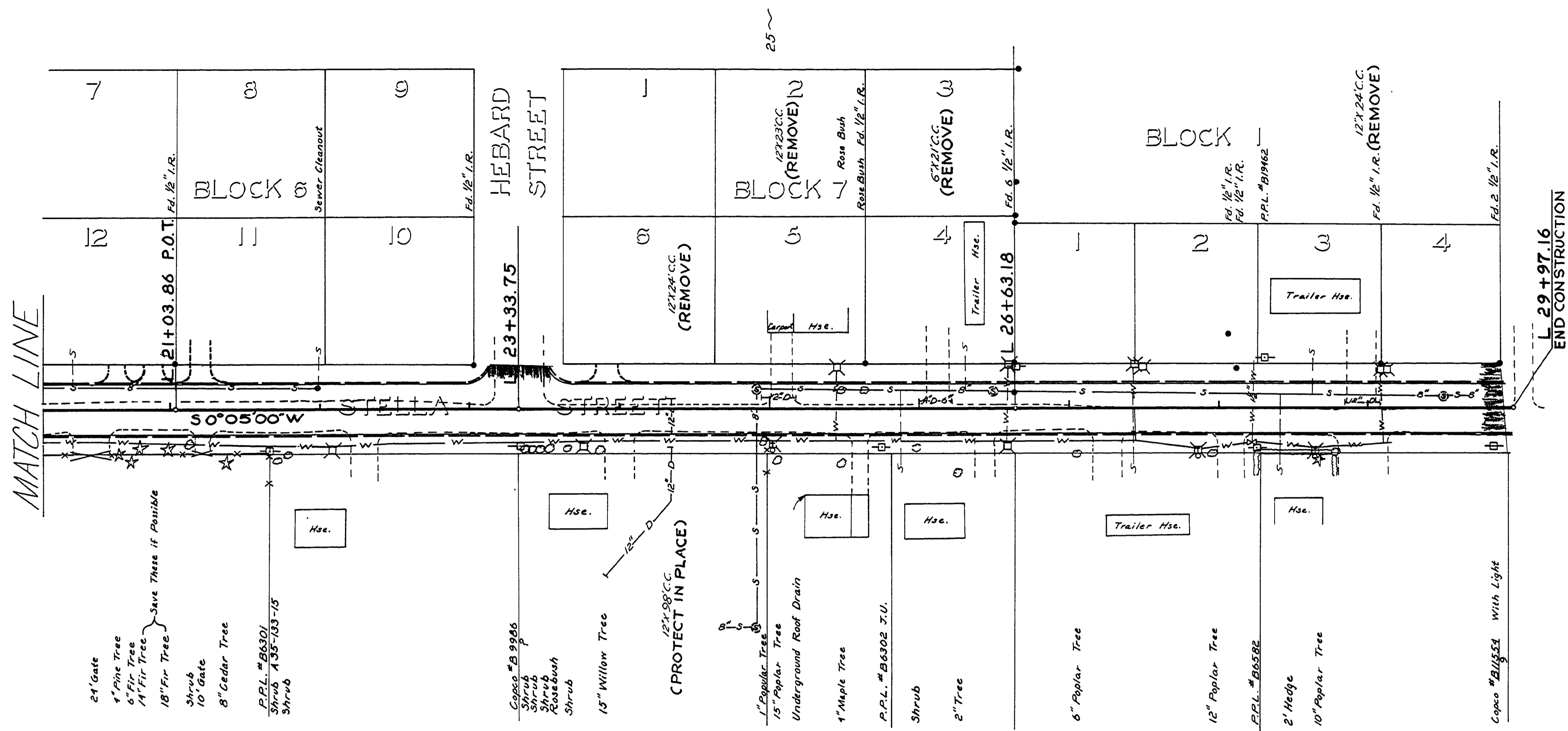


SEC. 10 T 28 S R 6 W W.M.



FILED
RECEIVED
AUG 1 1979
COUNTY SURVEYOR
DOUGLAS COUNTY, ORE



20+00

25+00

30+00

AS BUILT 8/1/79 L.L.
DOUGLAS COUNTY
PUBLIC WORKS DEPARTMENT
STELLA STREET
1979 SHT. 4
GEORGE E. GRUBB, DIRECTOR

00250044

M.P. 0.25 - 0.44

Co. Rd #2-#6 1979 4/10