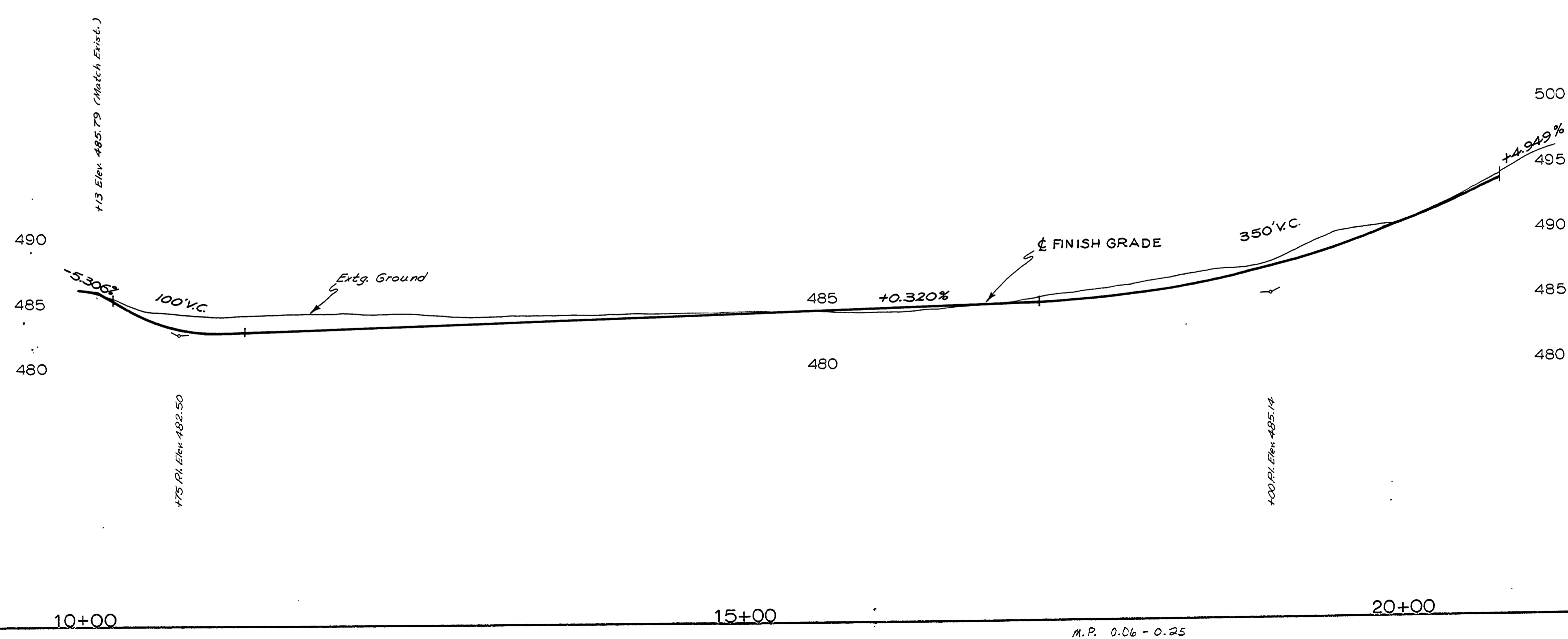
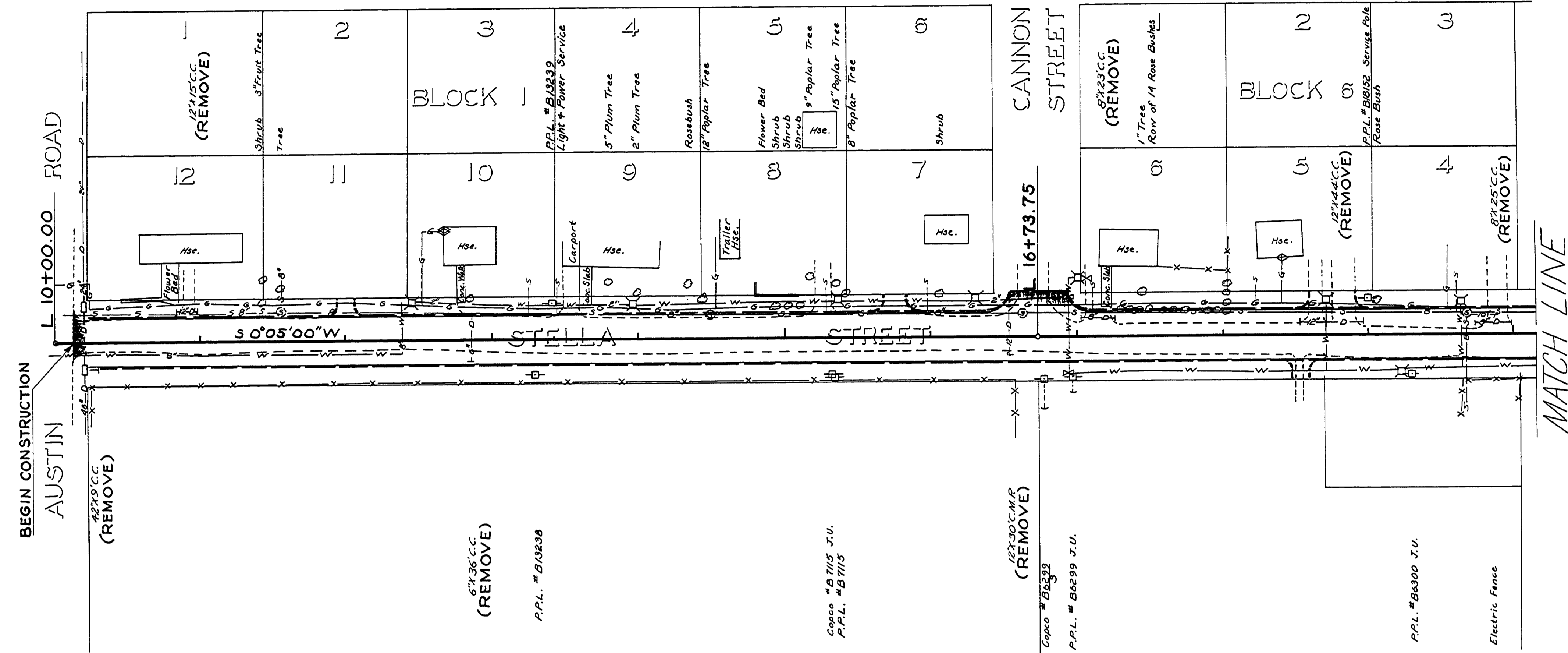


SEC. 10 T 28 S R 6 W W.M.

FILED
RECEIVED
AUG 1 1979
COUNTY SURVEYOR
DOUGLAS COUNTY, ORE.



AS BUILT 8/1/79 L.L.
DOUGLAS COUNTY
PUBLIC WORKS DEPARTMENT
STELLA STREET
1979 SHT. 3
GEORGE E. GRUBB, DIRECTOR

M.P. 0.06 - 0.25

1979 3/10
Co. Rd # 246 Sht. 3 of 10 (12)

00060025