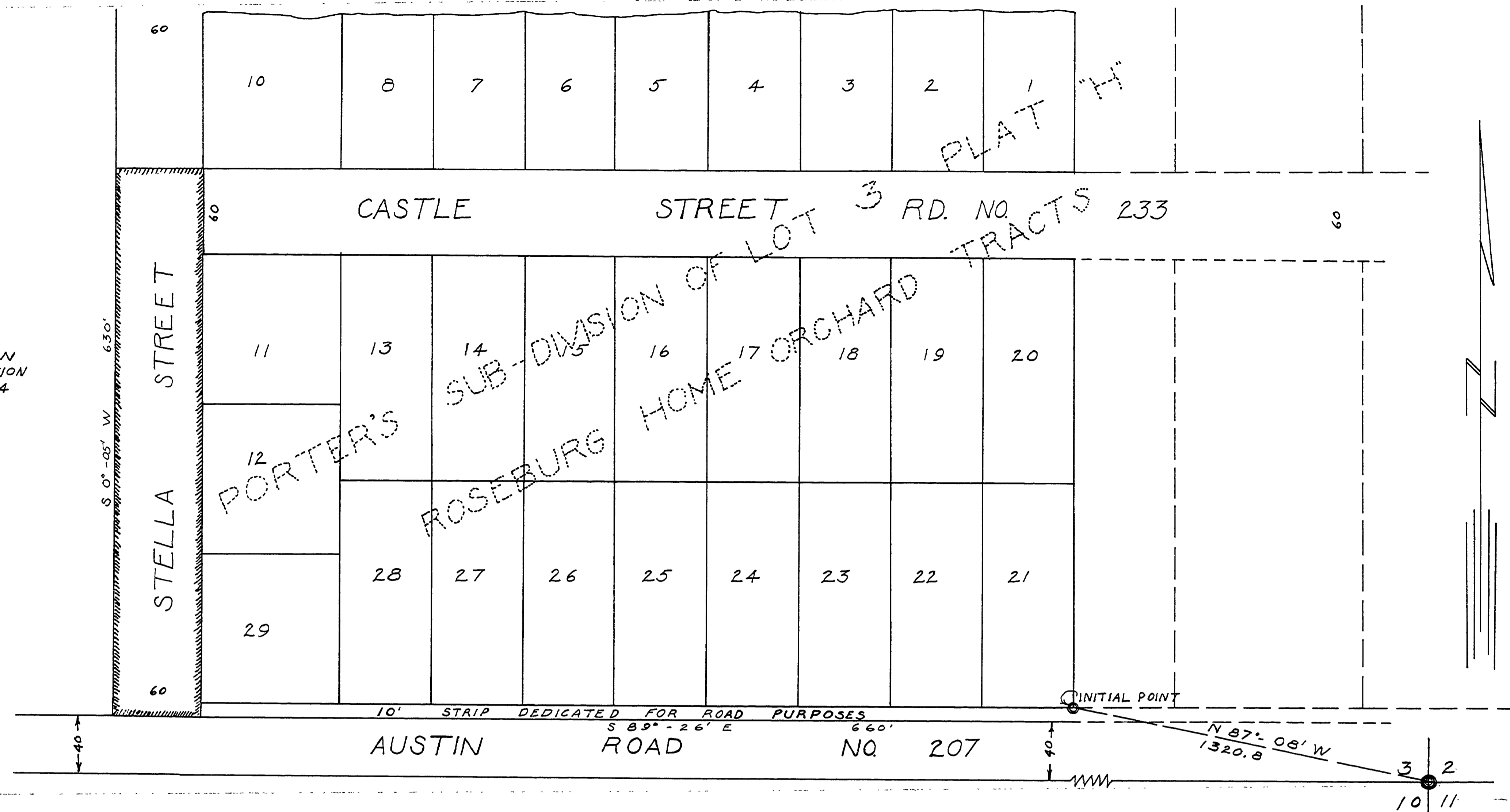


FINAL SURVEY  
 RECALCULATED  
 CORRECTED  
 AREAS  
 BEARING

STELLA STREET SHOWN AS DEDICATED ON THE OFFICIAL PLAT OF PORTER'S SUB-DIVISION OF LOT 3 PLAT H R.H.O.T. IN VOL. 9 PAGE 44 OFFICE OF THE DOUGLAS COUNTY CLERK.



STELLA STREET ROAD NO. 246  
 ADOPTED BY RESOLUTION OF COUNTY  
 COURT SHOWN IN RED OCT. 28 1958

*V. T. Jackson* COUNTY JUDGE  
*Earl ...* COUNTY COMM.  
*Anna M. ...* COUNTY COMM.

ORIGINAL SURVEY  
 SURVEYED  
 PLOTTED  
 FILED  
 DATE  
 NO.

DOUGLAS COUNTY, OREGON  
 STELLA STREET Rd. No. 246  
 TWP. 28 S Oct. 1958  
 RNG. 6W Sheet No. 1  
 SEC. 3 of 1 sheet  
 Scale: Map 1" = 50'

A.H. MAY COUNTY ENGINEER

00000006

M.P. 0.00-0.06

Co. Rd. # 246

Oct. 1958  
 SHEET 1 OF 1

17