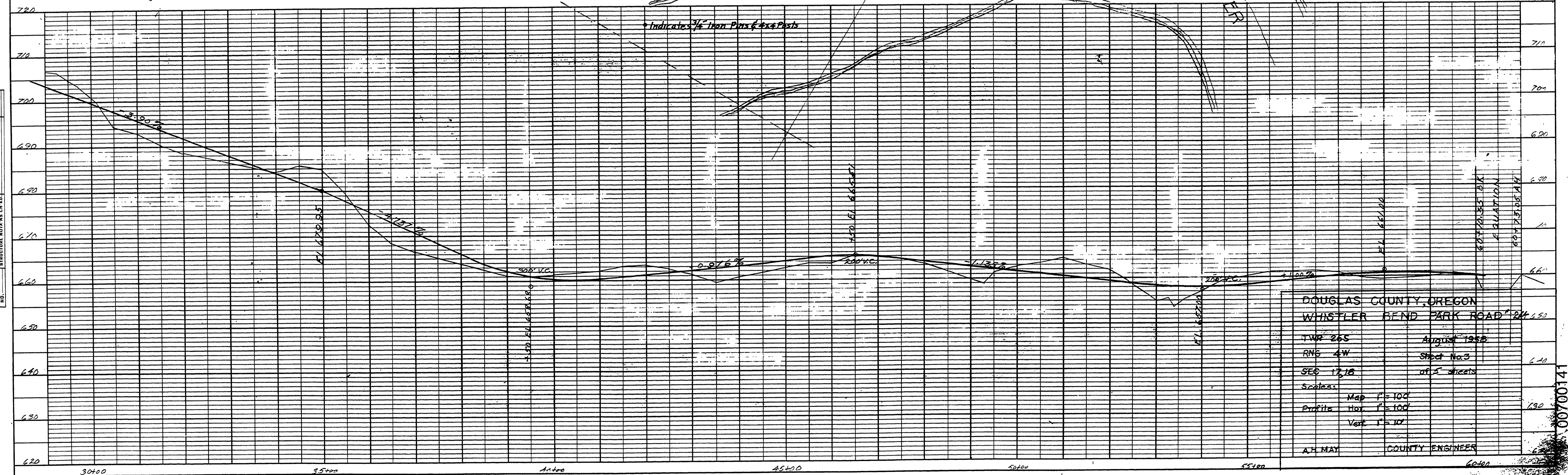
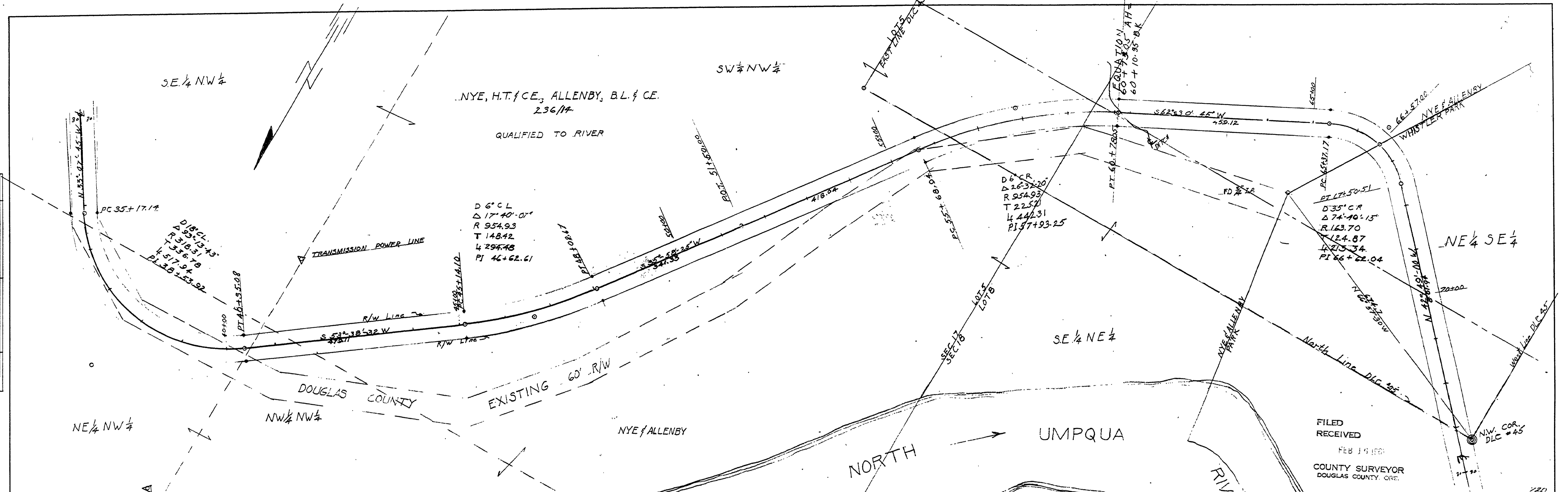


DATE _____
 PLAN SURVEYED _____
 PLOTTED _____
 NOTE BOOK _____
 NO. _____

PROFILE SURVEYED _____
 PLOTTED _____
 GRADES CHECKED _____
 NOTE BOOK _____
 NO. _____



FILED
 RECEIVED
 FEB 15 1958
 COUNTY SURVEYOR
 DOUGLAS COUNTY, ORE.

DOUGLAS COUNTY, OREGON
 WHISTLER BEND PARK ROAD
 LWP 265 August 1958
 RNS 4W Sheet No. 3
 SEC 17, 18 of 5 sheets
 Scales: Map 1" = 100'
 Profile Hor. 1" = 100'
 Vert. 1" = 10'
 A.H. MAY COUNTY ENGINEER

PLATE 1-PLAN-PROFILE O.P.R. & R.E. STANDARD
 100% RAG PAPER-MADE AND PRINTED IN U. S. A.
 EUGENE DIEZGEN CO.

M.P. 0.70-1.41

Aug. 1958
 Co. Rd. # 244 sht. 3 of 5

0070014