

PLAN SURVEYED
 NOTE BOOK
 ALIGNMENT CHECKED
 REF. OF WAY CHECKED
 NO.

PROFILE SURVEYED
 GRADES CHECKED
 S. M. NO. NOTED
 SINDVIG'S CORRECTIONS
 NO.

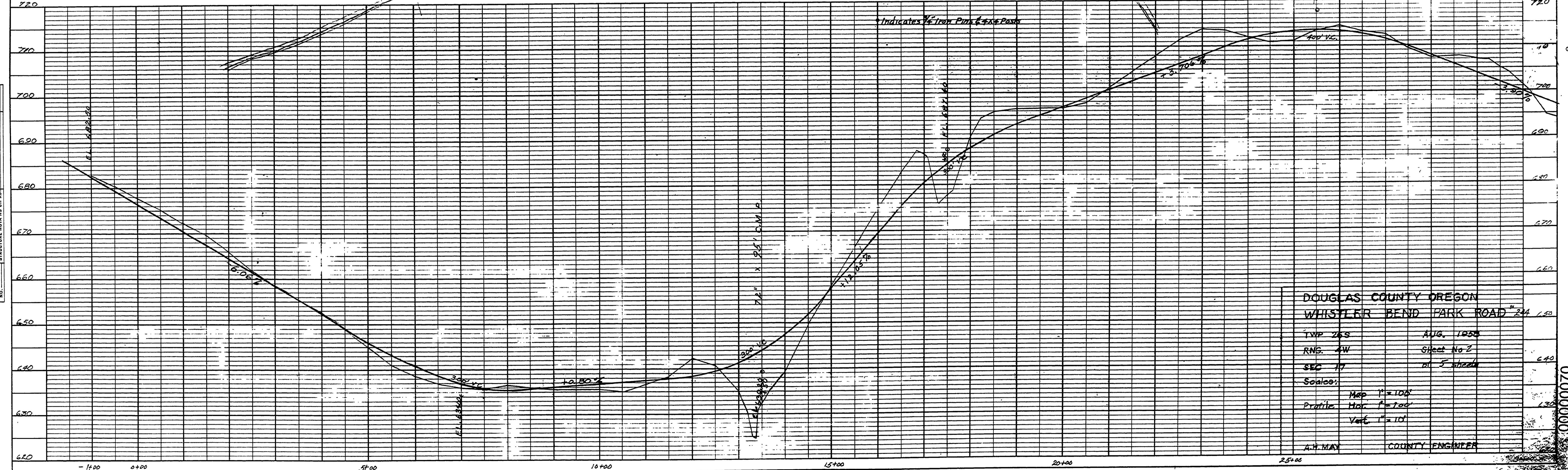
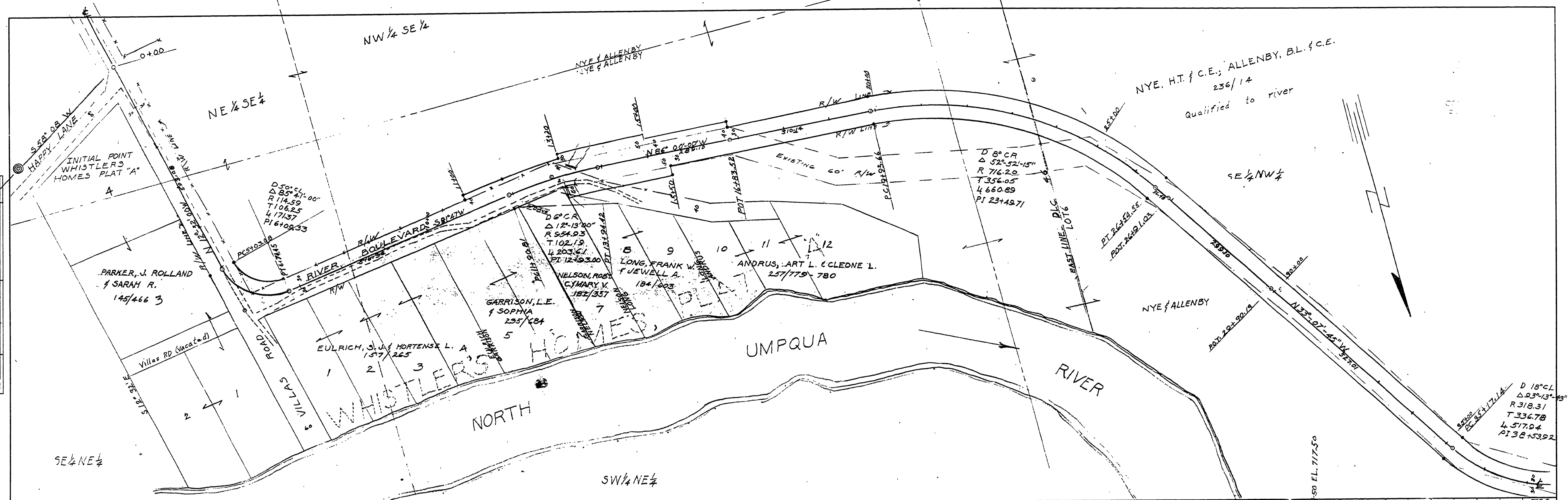


PLATE 1-PLAN-PROFILE O.P.R. & S.E. STANDARD
 100% RAG PAPER - MADE AND PRINTED IN U. S. A.
 EUGENE DIEZGEN CO.

DOUGLAS COUNTY OREGON
 WHISTLER BEND PARK ROAD #244
 TWP 26S AUG. 1958
 RNS. 4W Sheet No 2
 SEC 17 M. S. Wheeler
 Scales: Map 1"=100'
 Profile Hor. 1"=100'
 Vert. 1"=10'
 A. H. MAY COUNTY ENGINEER

M.P. 0.00 - 0.70

C. Rd #244 sht. 2 of 5 Aug. 1958

000000070