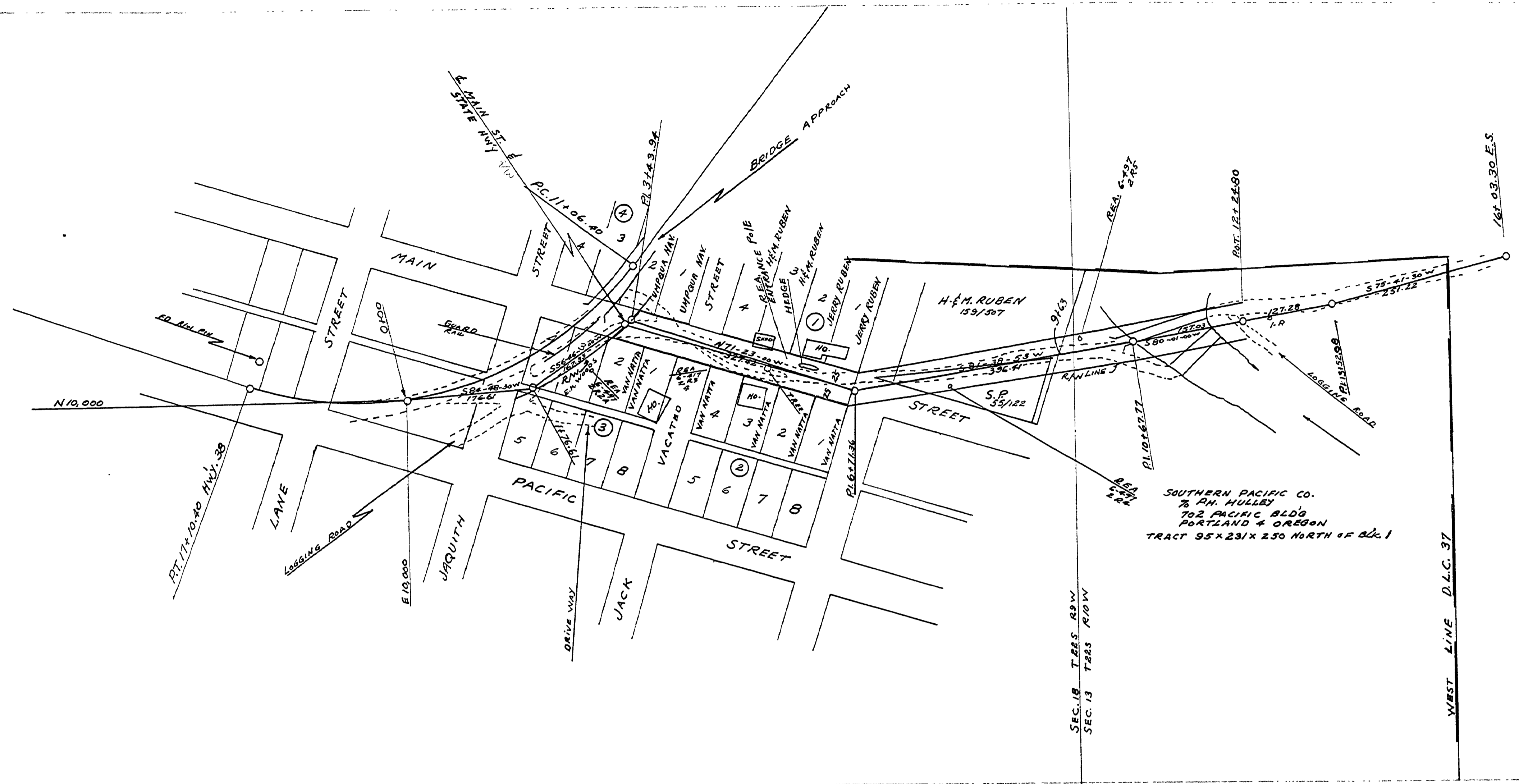


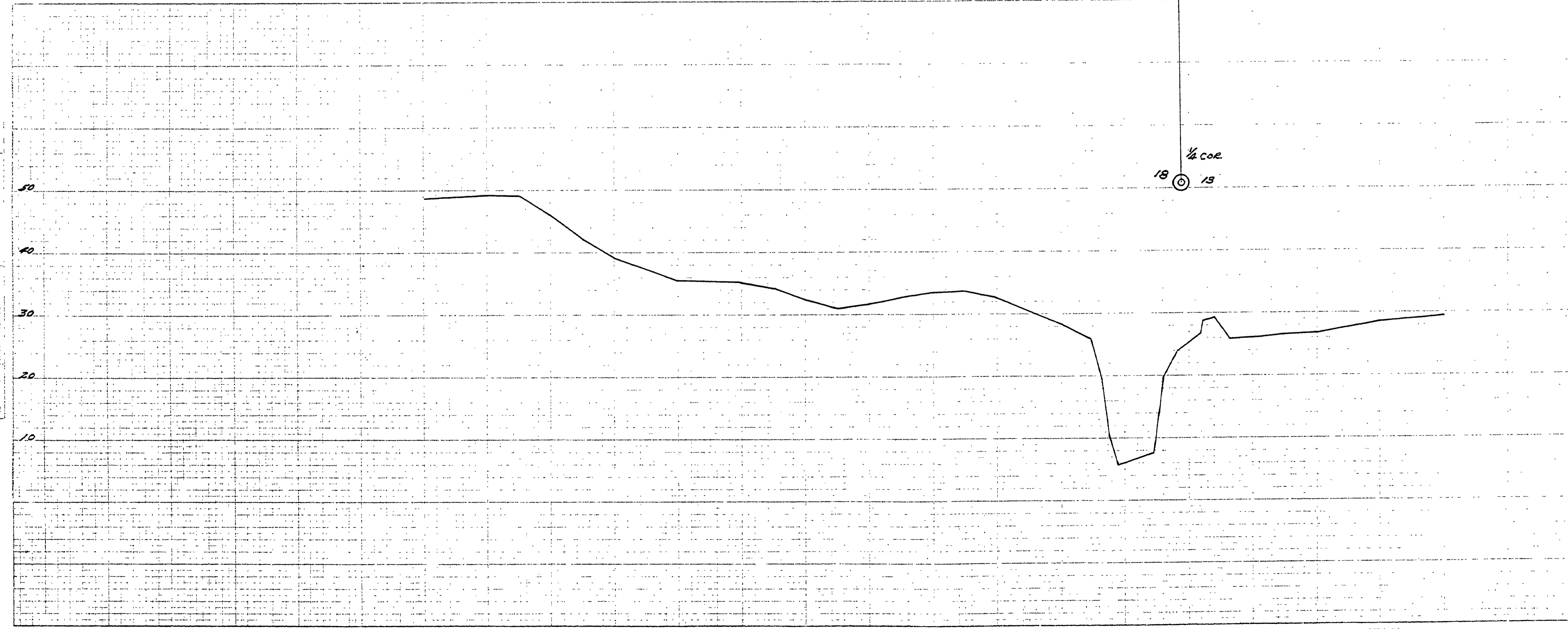
FINAL SURVEY PLANNED
 REVISIONS
 DATE

ORIGINAL SURVEY PLANNED
 REVISIONS
 DATE



SCOTTSBURG WEST ROAD NUMBER 240
 ADOPTED BY RESOLUTION OF COUNTY COURT
 SHOWN IN RED OCT. 8 1957
V. T. Jackson COUNTY JUDGE
Alvin W. May COUNTY COMM.
 COUNTY COMM.

STREET AS SHOWN DEDICATED IN PLAT OF SCOTTSBURG
 RECORDED IN VOL. NO. 1 PAGE 4 IN DOUGLAS COUNTY
 CLERKS OFFICE



Approved by Alvin W. May Oct. 8, 1957
 Co. Engineer

FILED
 RECEIVED
 OCT 9 1957
 COUNTY SURVEYOR
 DOUGLAS COUNTY, ORE.

DOUGLAS COUNTY, OREGON
 SCOTTSBURG WEST RD. NO. 240
 TWP. 22S MAR. 1957
 RNG. 9 & 10
 SEC. 18 & 13
 SCALES
 MAP 1" = 100'
 HOR 1" = 100'
 PROFILE VERT. 1" = 10'
 A.H. MAY COUNTY ENGINEER

00000030

M.P. 0.00-0.30

GR # 240 sht 1 of 1