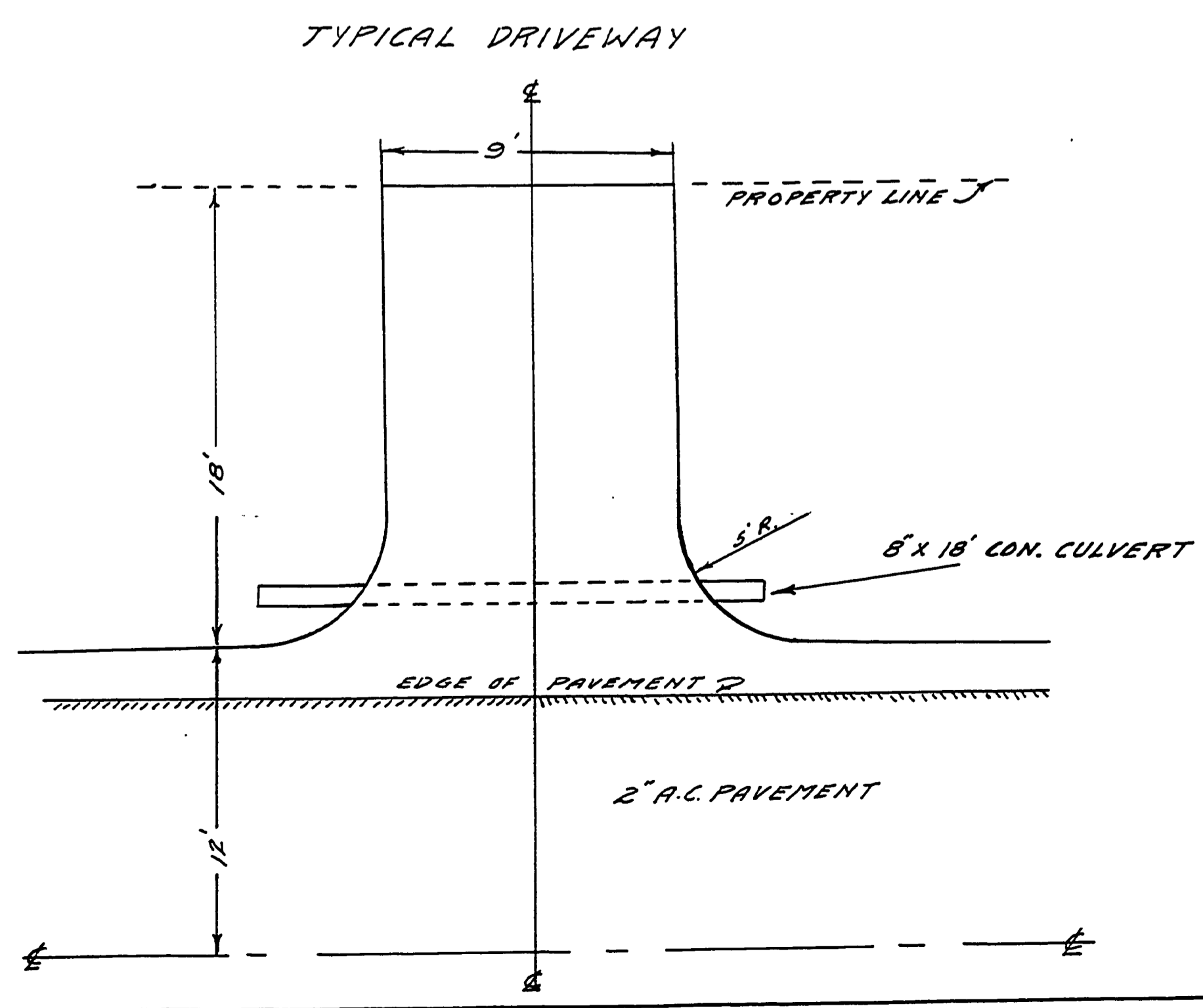
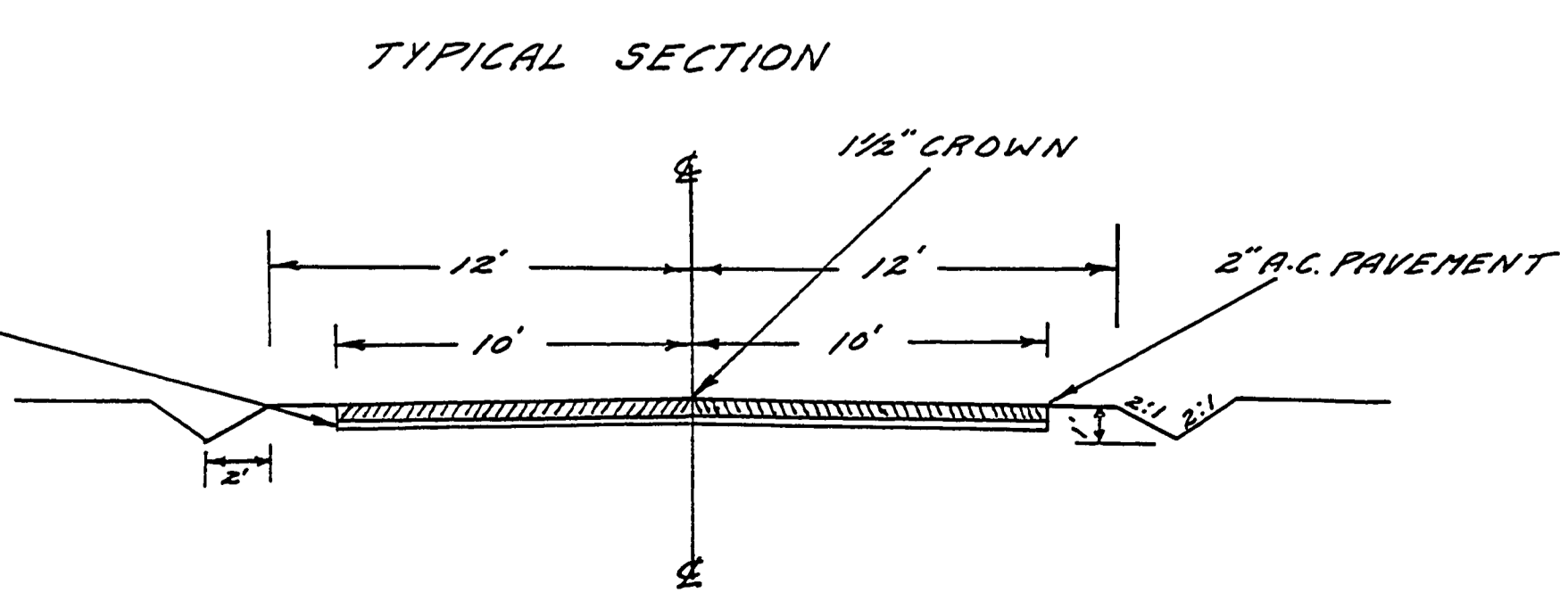
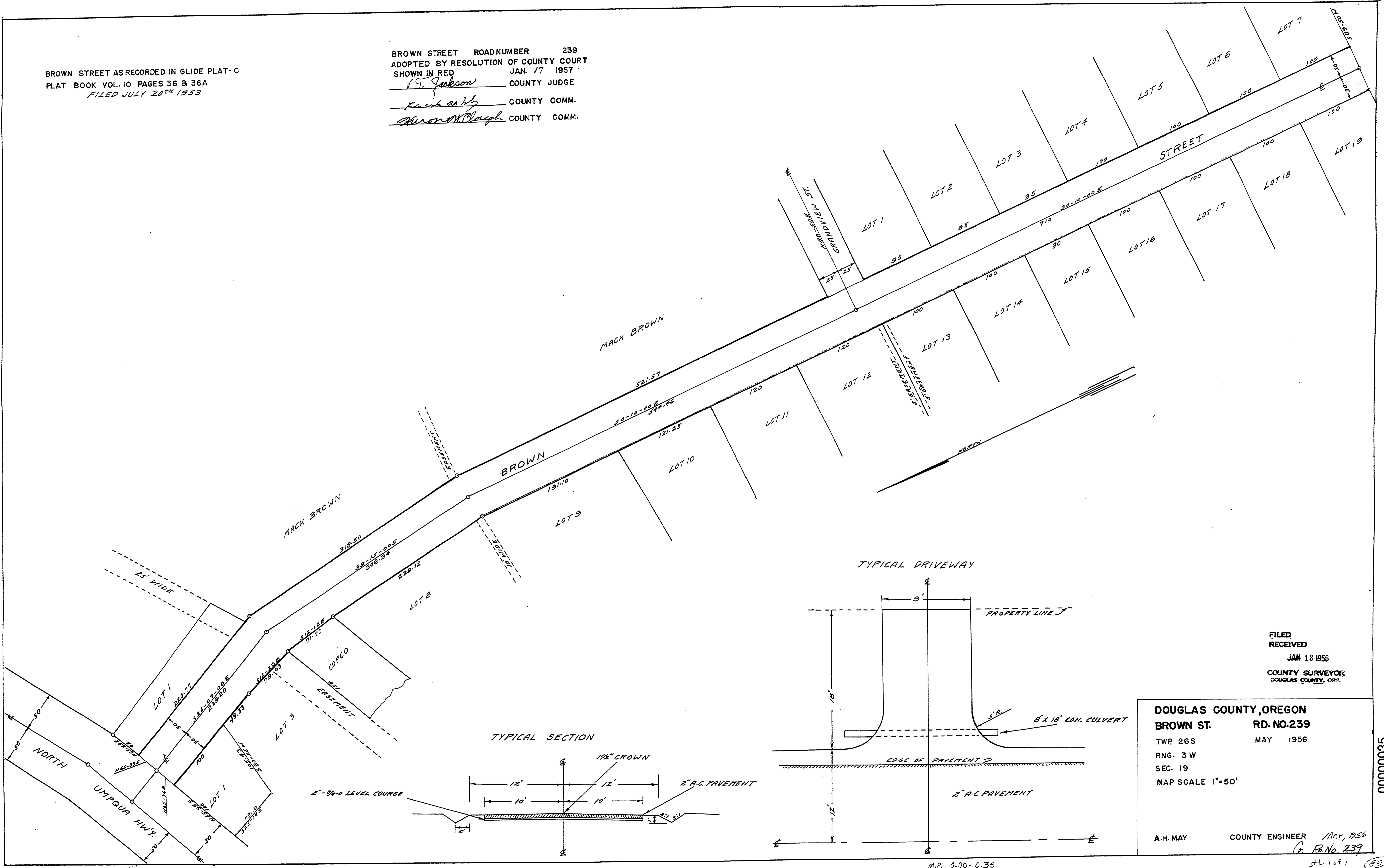


BROWN STREET AS RECORDED IN GLIDE PLAT-C
 PLAT BOOK VOL. 10 PAGES 36 & 36A
 FILED JULY 20TH 1953

BROWN STREET ROADNUMBER 239
 ADOPTED BY RESOLUTION OF COUNTY COURT
 SHOWN IN RED JAN. 17 1957
 V. T. Jackson COUNTY JUDGE
 Frank A. W. County Comm.
 Marion W. Plough County Comm.



FILED
 RECEIVED
 JAN 18 1956
 COUNTY SURVEYOR
 DOUGLAS COUNTY, ORE.

DOUGLAS COUNTY, OREGON
BROWN ST. RD. NO. 239
 TWP. 26S MAY 1956
 RANG. 3W
 SEC. 19
 MAP SCALE 1" = 50'
 A.H. MAY COUNTY ENGINEER
 May, 1956
 D. R. No. 239
 1 of 1

M.P. 0.00-0.35

00000035