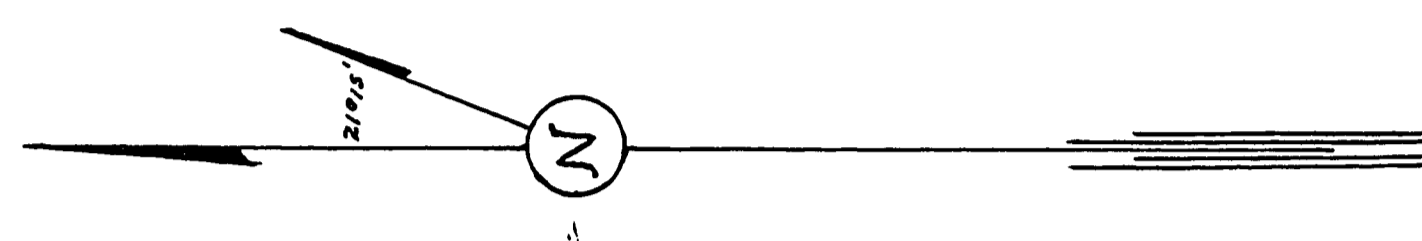
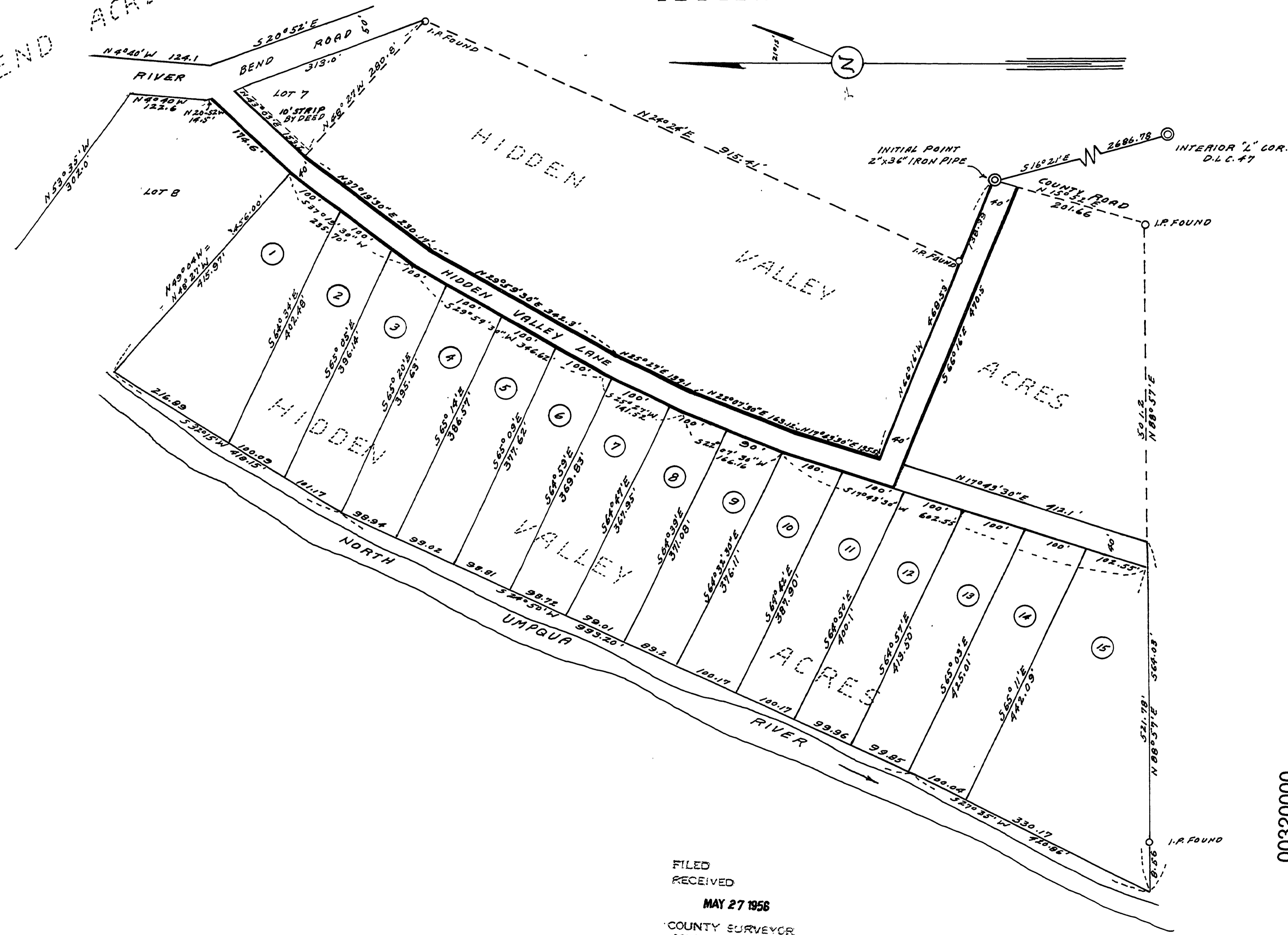


HIDDEN VALLEY CO. RD. NO. 236
 ADOPTED BY RESOLUTION OF COUNTY COURT
 SHOWN IN RED JUNE 1956
 --- *Clair* --- COUNTY JUDGE
 --- *Frank W. W.* --- COUNTY COMM.
 --- *W. T. Evans* --- COUNTY COMM.



RIVER BEND ACRES



00320000

FILED
 RECEIVED
 MAY 27 1956
 COUNTY SURVEYOR
 DOUGLAS COUNTY, ORE.
 M.P. 0.32-0.00

Co. Road No. 236. *at 100'* (85)

