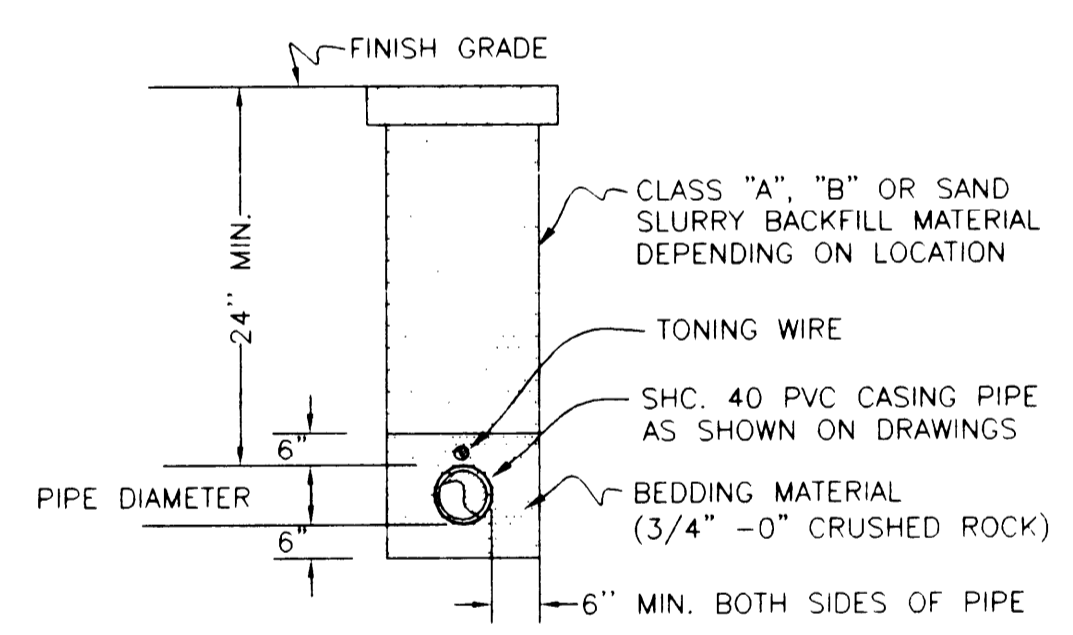
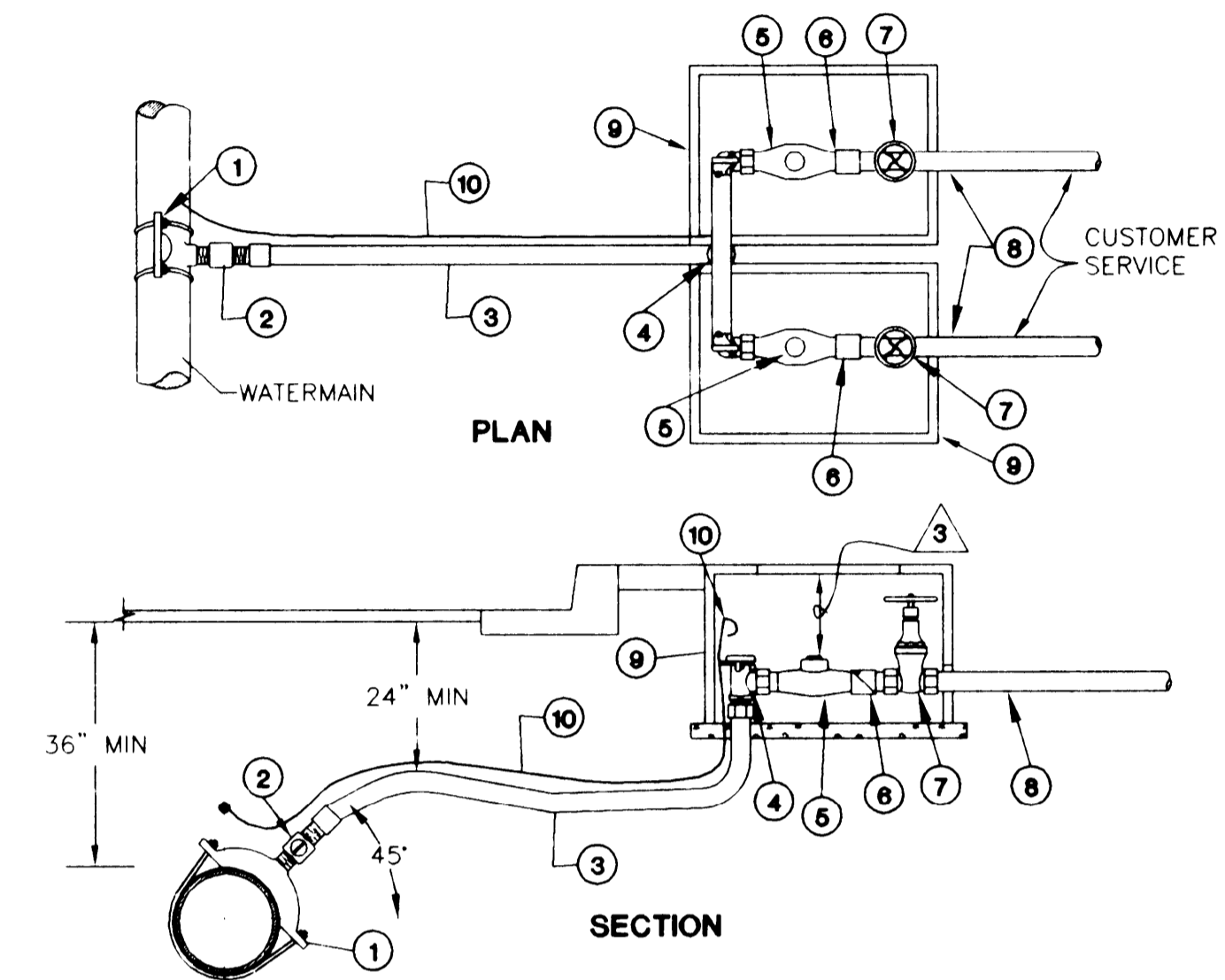


TYPICAL STORM LINE TRENCH DETAIL



TYPICAL SERVICE LINE TRENCH DETAIL



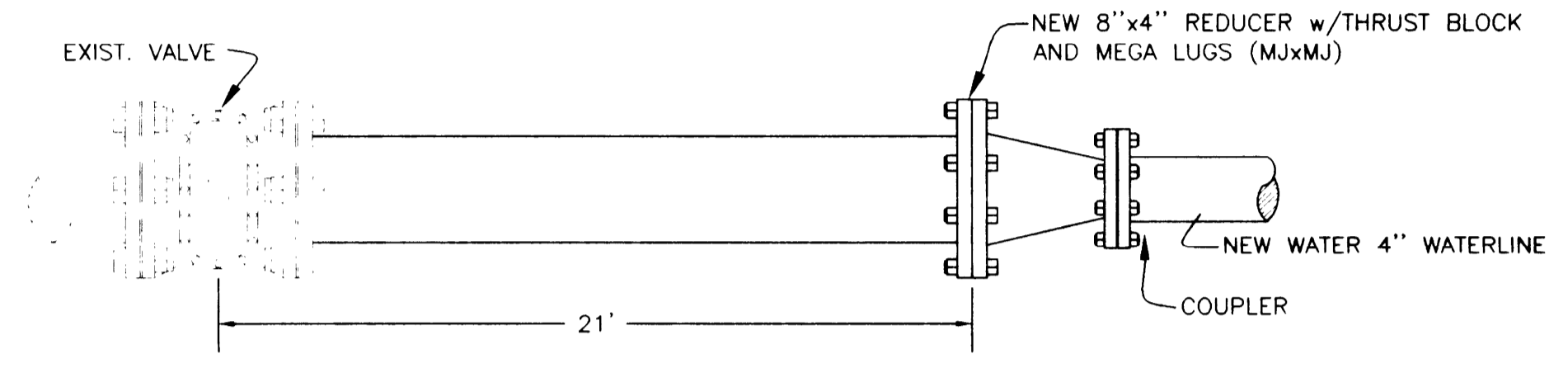
ITEM NO.	SIZE	DESCRIPTION	TYPE	QTY.
1	AS REQ'D	SERVICE SADDLE	FORD, BRASS S-91	1
2	1"	CORP. STOP	FORD, F-1100-G	1
3	1"	SERVICE PIPE	200 psi HI MOLY POLYETHYLENE CTS PIPE	AS REQ'D
4	1"	BRANCH VALVE ASSEMBLY	FORD, UV-43-32, 14" WIDTH	1
5	5/8"x3/4"	METER	NEPTUNE T-10 GALLONS READER (TO BE SUPPLIED AS REQUIRED BY RCW)	2
6	3/4"	CHECK VALVE	FORD HS38-323	2
7	3/4"	CUSTOMER VALVE	METER ADAPTER WITH 3/4" GATE VALVE	2
8	-	CUSTOMER SERVICE	PER STATE PLUMBING CODE (RECONNECT TO EXISTING CUSTOMER SERVICE)	-
9	-	METER BOX	PLASTIC	2
10	NO. 12	TO NE WIRE	ELECTRICAL AWG SOLID COPPER WIRE, COIL 1'-0" IN METER BOX	AS REQ'D

△ OR APPROVED EQUAL. SEE GENERAL SPECIFICATIONS.
 △ TYPE AS APPROVED BY MANUFACTURER FOR WATER MAIN TYPE & SIZE.
 △ TOP OF METER SHALL BE 4" TO 6" BELOW BOTTOM OF LID.

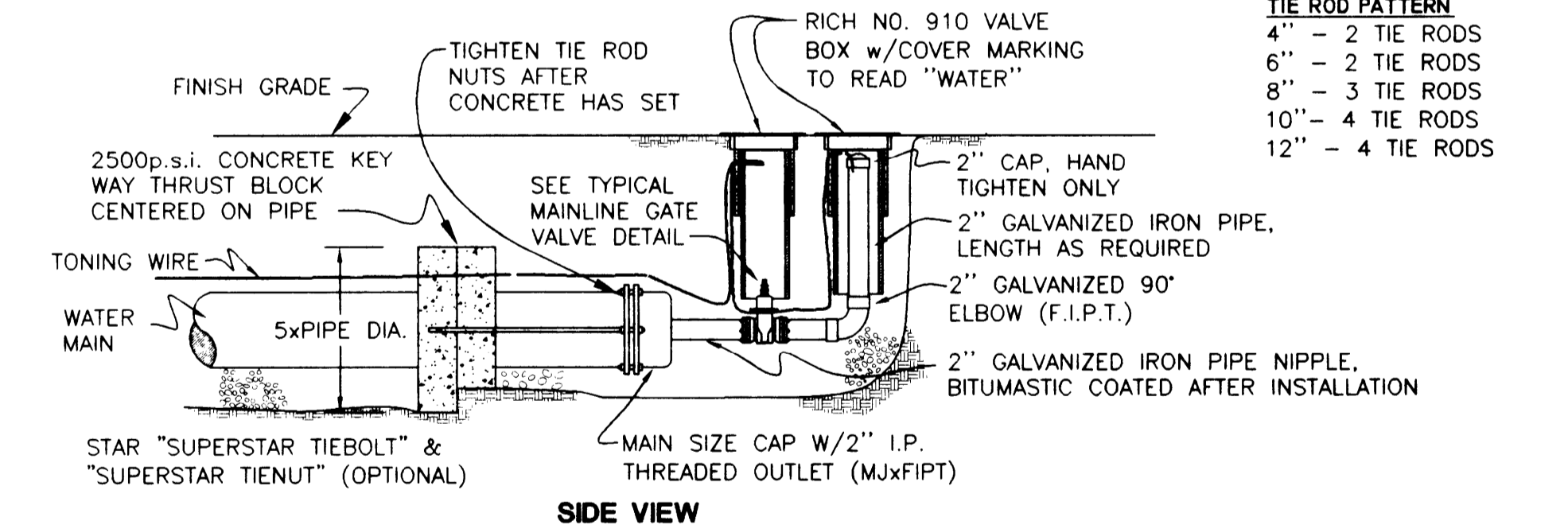
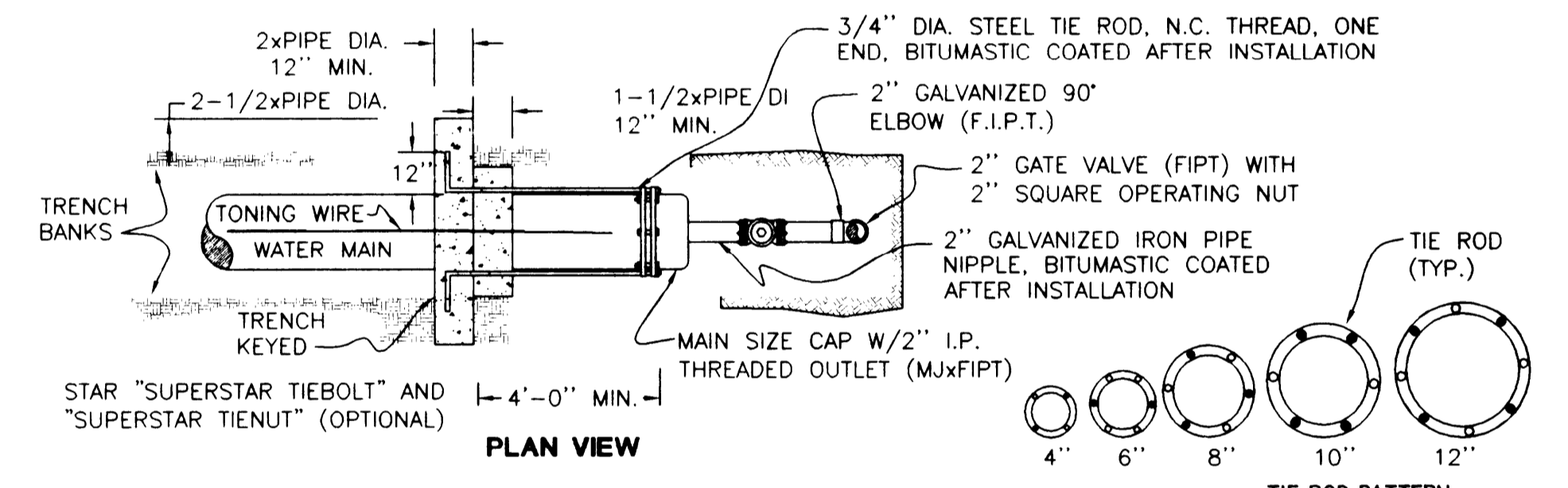
TYPICAL DUAL 5/8"x3/4" METER INSTALLATION ASSEMBLY

ROLLING HILLS RD.

NOTES:
 ALL PIPE AND FITTINGS FOR TIE-IN TO BE CLEAN AND WIPED w/CHLORINE PRIOR TO INSTALLATION
 CONTRACTOR TO ALIGN NEW MAINLINES IN BOTH ALIGNMENT AND GRADE w/EXISTING WATERLINES. CONNECTION TO EXISTING WATERLINE CAN ONLY BE MADE AFTER INSTALLATION, TESTING & DISINFECTION OF NEW WATERLINE HAS BEEN COMPLETED.



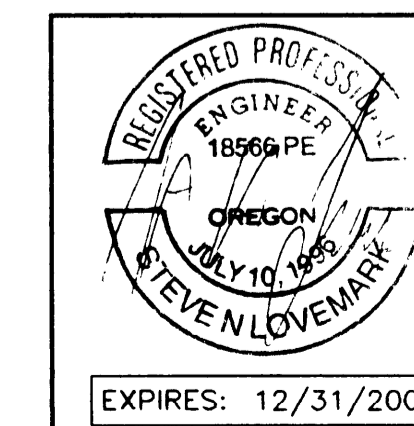
WATER TIE-IN DETAIL
 MAKYA COURT



TYPICAL 2" BLOWOFF ASSEMBLY DETAIL (108)

CALL BEFORE YOU DIG!
 ONE CALL: (800) 332-2344
 OAR 952-001-0010 THROUGH
 OAR 952-001-0090

i.e. ENGINEERING
 741 SE Jackson Street
 Roseburg, Oregon 97470
 PHONE (541) 673-0166
 FAX (541) 440-9392



Rev.	Date	Dwg	Description
1	8/21/01	KTG	AS-BUILTS

Project Name: GUYER SUBDIVISION	
Title: DETAILS	
DES SNL	PROJECT NO. 152-25
DWG FLB	DATE: JUNE 6, 2001
CHK SNL	SCALE: NO SCALE
APP SNL	SHEET: 3 OF 5

Co.Rd.# 233A MP 0.00-0.02