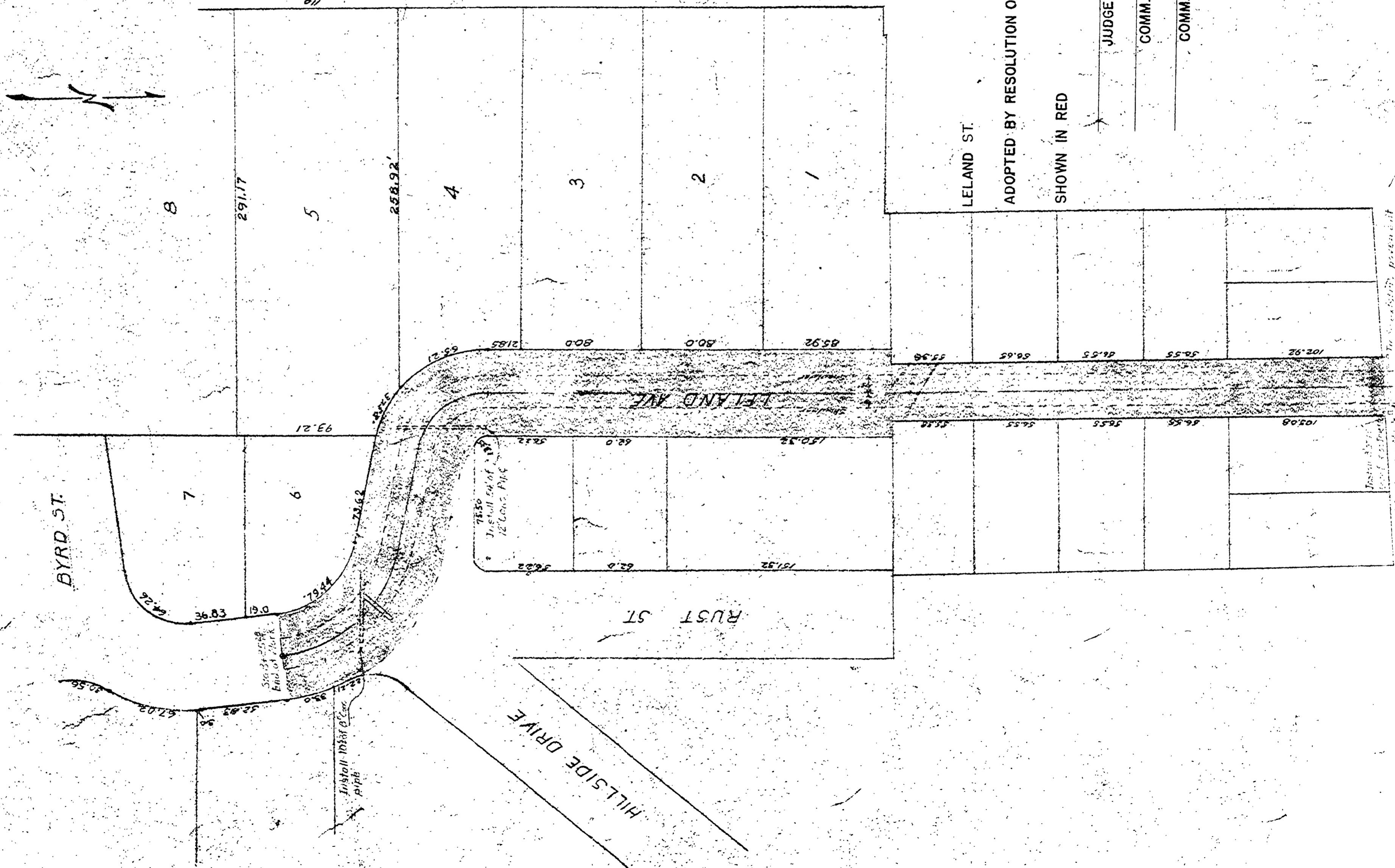


Data:
 1. 6" Base - 6" Bar Rein
 2. Level Course 2' crushed 1/2" 0
 3. 2" A.C. Flange - Class B 203H
 Note: Fixed Ditch Section
 1953 - Improvement

TYPICAL SECTION
 LELAND AVE
 LOCATION - E -
 RUST & LINROY SUB.



LELAND ST. RD. NO. 231

ADOPTED BY RESOLUTION OF THE COUNTY COURT

SHOWN IN RED JAN. 1956

JUDGE

COMM.

COMM.

00RD0231