

FILED
RECEIVED
DEC 7 1955
COUNTY SURVEYOR
DOUGLAS COUNTY, OREG.

RIVER BEND ACRES

SECTION 23 - Twp. 26 S. - R. 6 W. - W. M.
DOUGLAS COUNTY, OREGON
Scale 1 inch = 200 ft.

CERTIFICATE OF SURVEYOR

I, Floyd C. Frear, being first duly sworn depose and say that I have surveyed and marked with proper monuments the lands shown on the annexed plat of which the following is a true and correct description to wit:-

Beginning at a 2 inch by 36 inch iron pipe on the West right of way line of County Road No 189 and from which the Interior "L" Corner of James McKinney D.L.C. No 47 in Section 23 - T. 26 S. - R. 6 W. - W. M. - Douglas County, Oregon bears 814 feet East and 2548 ft. South, Thence N. 66° 46' W. 137.7 ft. to a 1" x 30" I. pipe, thence N. 23° 19' E. 915.1 ft. to a 1" x 36" I. pipe, thence N. 49° 04' W. 694.8 ft. to a 3/4" x 30" I. pipe, thence N. 35° 48' E. 1270.0 ft., thence S. 78° 14' E. 646.7 ft., thence S. 66° 13' E. 592.2 ft., thence S. 46° 54' E. 563.0 ft., thence S. 52° 23' W. 615.0 ft. to a 1" x 36" I. pipe, thence N. 41° 04' W. 60.0 ft. to a 1" x 36" I. pipe, thence N. 48° 56' E. 10.0 ft., thence N. 41° 04' W. 332.0 ft. to a 1" x 36" I. pipe, thence N. 53° 48' W. 286.0 ft. to a 1" x 30" I. pipe, thence N. 72° 58' W. 75.0 ft. to a 3/4" x 30" I. pipe, thence N. 81° 28' W. 294.0 ft. to a 1" x 30" I. pipe, thence S. 73° 20' W. 282.3 ft. to a 1" x 30" I. pipe, thence S. 45° 00' W. 183.7 ft. to a 1" x 30" I. pipe, thence S. 36° 25' W. 277.6 ft. to a 1" x 30" I. pipe, thence S. 4° 40' E. 124.1 ft. to a 1" x 30" I. pipe, thence S. 20° 52' E. 269.0 ft. to a 1" x 30" I. pipe, thence N. 36° 45' E. 136.0 ft. to a 1" x 30" I. pipe, thence S. 51° 27' E. 538.0 ft. to a 1" x 30" I. pipe, thence S. 25° 15' W. 70.0 ft. to a 1" x 30" I. pipe thence S. 46° 35' W. 996.3 ft. to the place of beginning and containing 3777 acres of land more or less.

Floyd C. Frear REG. ENGR. NO. 352

APPROVALS

APPROVED August 4 1948
BY ORDER OF THE COUNTY COURT
D. B. ... JUDGE
R. V. ... COUNTY COMMISSIONER
COUNTY COMMISSIONER

APPROVED July 22 1948
Ned ... COUNTY ASSESSOR
APPROVED August 2 1948
Paul ... COUNTY SURVEYOR

ROSEBURG PLANNING COMMISSION
APPROVED August 2 1948
Harold ... Secretary
Paul ... President

ACKNOWLEDGEMENT

State of Oregon } ss
County of Douglas } On the 19th day of July 1948
appeared DORIS SALVEN a single woman to me personally known, who being duly sworn did say that she is the owner of the lands shown on the annexed plat and acknowledged the adjacent instrument was her free act and deed.
IN TESTIMONY WHEREOF I hereunto set my hand and seal the day and year above written.

Ray ...
COUNTY CLERK

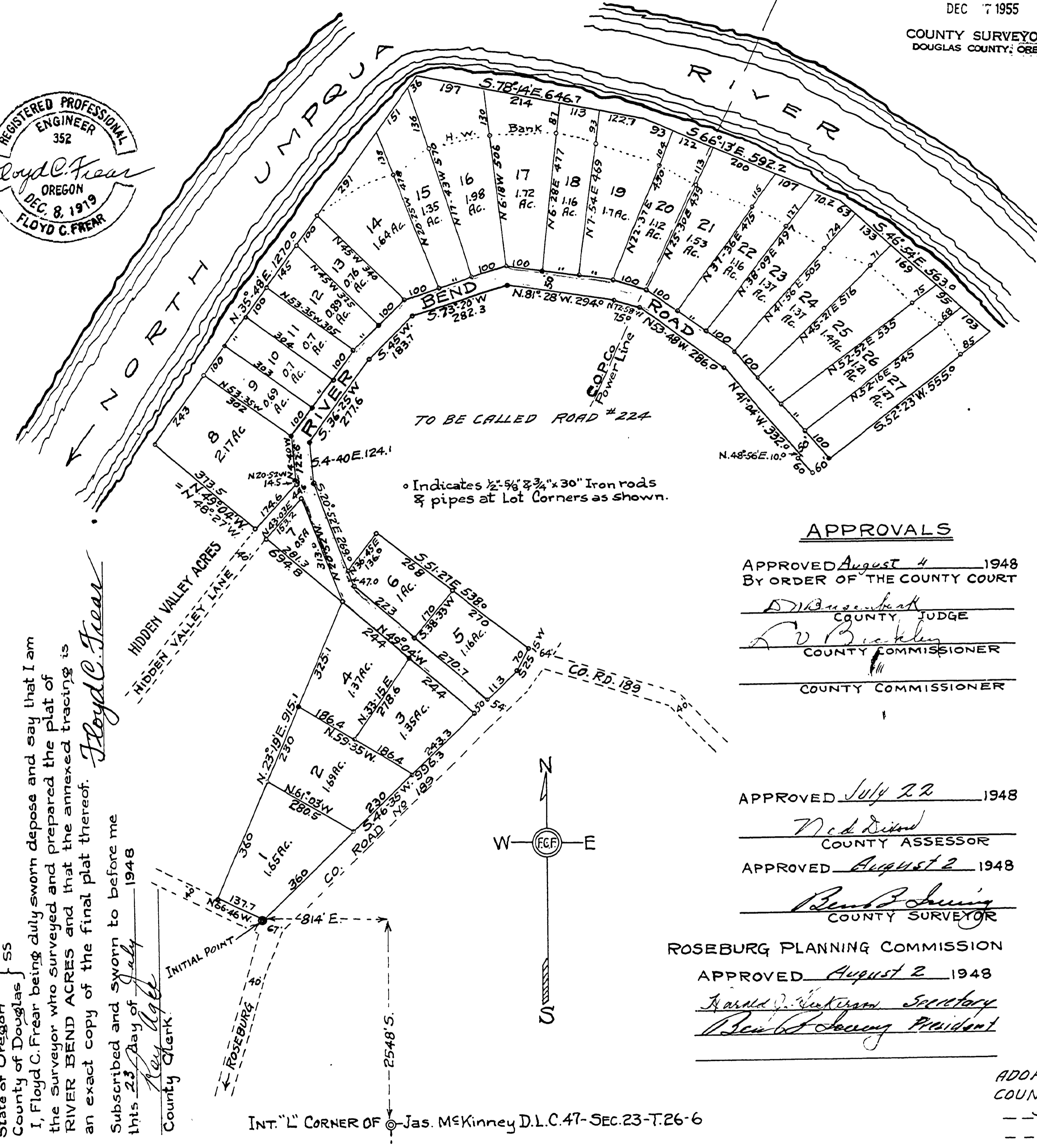
DEDICATION

KNOW ALL MEN BY THESE PRESENTS: That I, DORIS SALVEN owner of the lands shown on the annexed plat, have caused the same to be surveyed and platted as and by the name of RIVER BEND ACRES and I do hereby dedicate to the public use forever the roads shown thereon.

Doris Salven

ADOPTED BY RESOLUTION OF
COUNTY COURT - SHOWN IN RED
Paul ... CO. JUDGE.
Paul ... CO. COMM.
DEC. 6 1955

FILED August 4th 1948
Ray ...
COUNTY CLERK



State of Oregon } ss
County of Douglas } I, Floyd C. Frear being duly sworn depose and say that I am the surveyor who surveyed and prepared the plat of RIVER BEND ACRES and that the annexed tracing is an exact copy of the final plat thereof.
Subscribed and sworn to before me this 23rd day of July 1948
Ray ...
County Clerk

INT. "L" CORNER OF Jas. McKinney D.L.C. 47 - SEC. 23 - T. 26 - 6

M.P. 0.00 - 0.47

Co. Rd. No. 224

24 X

00000047