

# ROSEBURG HOME-ORCHARD TRACTS

DOUGLAS COUNTY, OREGON.

Being Donation Land Claim No. 37, T. 26 S.; R. 7 W. and Donation Land Claims No's 58 and 59 and the North half of the North half of Claim No. 40 also the N.E. 1/4 of the S.W. 1/4 and Lots No's 6, 7, 8, 9, 10, 11, 12 and 13 of Sec. 20, T. 26 S.; R. 6 W.; W. M.

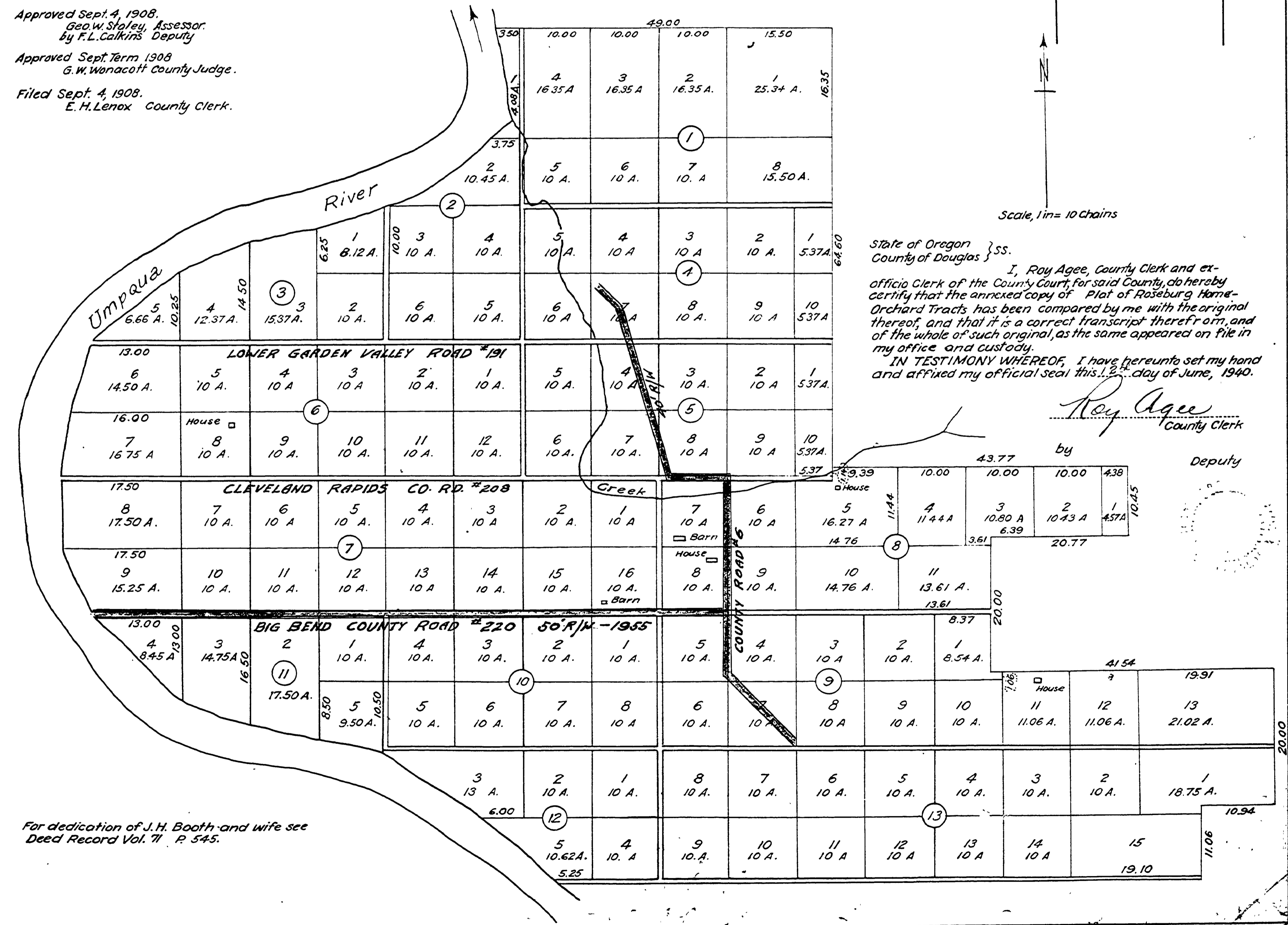
Approved Sept. 4, 1908  
G. E. Roberts, County Surveyor

Approved Sept. 4, 1908.  
Geo. W. Staley, Assessor  
by F. L. Calkins Deputy

Approved Sept. Term 1908  
G. W. Waincott County Judge.

Filed Sept. 4, 1908.  
E. H. Lenox County Clerk.

ROBERTS AND GERMOND  
CIVIL ENGINEERS  
1908



Vol. 1 - P58

FILED  
RECEIVED

DEC 13 1955

COUNTY SURVEYOR  
DOUGLAS COUNTY, ORE.

ROAD No.	RECORDED IN DOCKET No.	COUNT JOURNAL No.
208	837	19-114
220	843	21-364

Scale, 1 in = 10 chains

State of Oregon } ss.  
County of Douglas }  
I, Roy Agee, County Clerk and ex-officio Clerk of the County Court, for said County, do hereby certify that the annexed copy of Plat of Roseburg Home-Orchard Tracts has been compared by me with the original thereof, and that it is a correct transcript therefrom, and of the whole of such original, as the same appeared on file in my office and custody.

IN TESTIMONY WHEREOF, I have hereunto set my hand and affixed my official seal this 12th day of June, 1940.

*Roy Agee*  
County Clerk  
Deputy

For dedication of J. H. Booth and wife see Deed Record Vol. 71 P. 545.

M.P. 1.09 - 0.00

Co. Road # 220

01090000