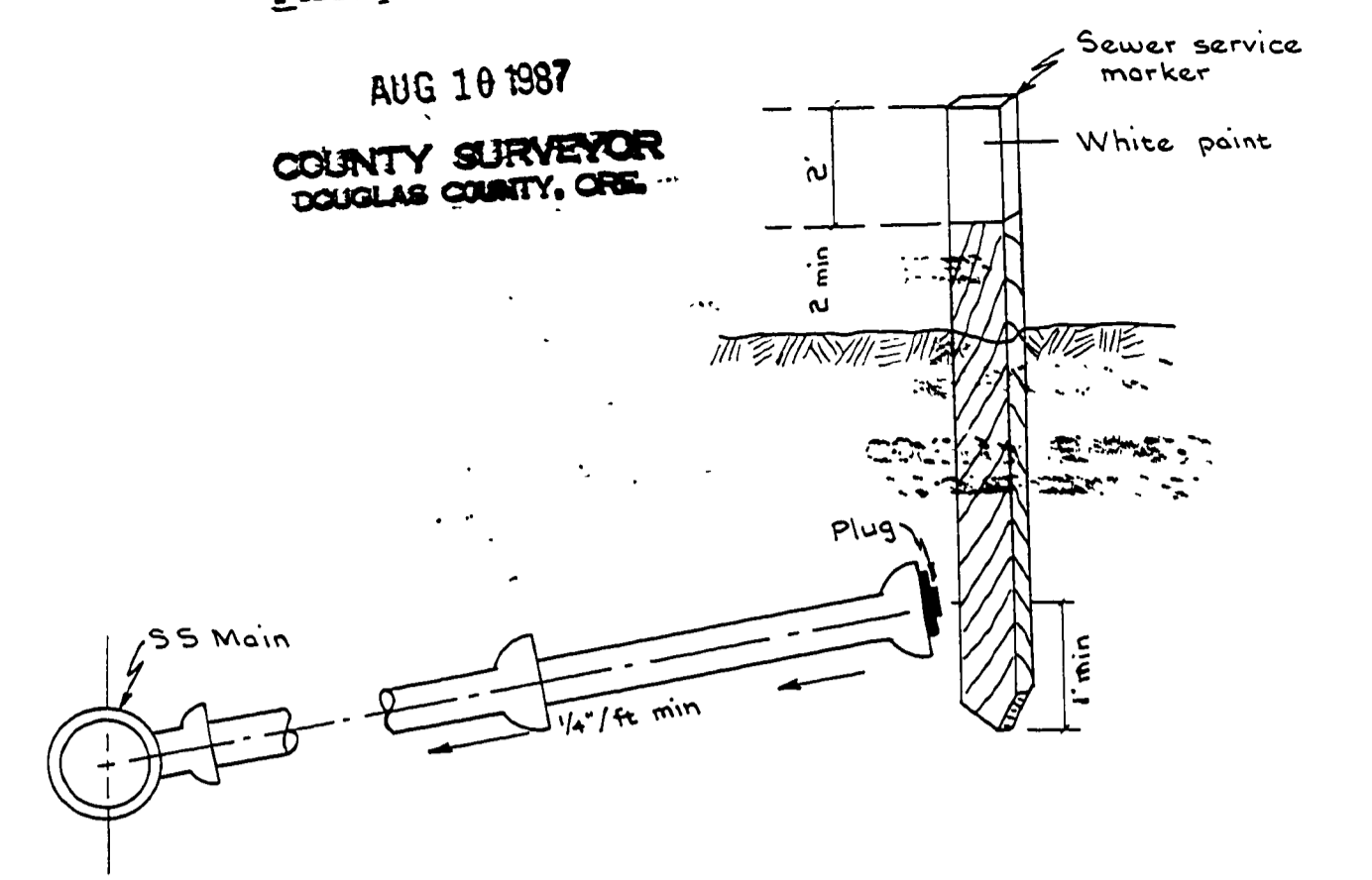


WHITESSELL ESTATES

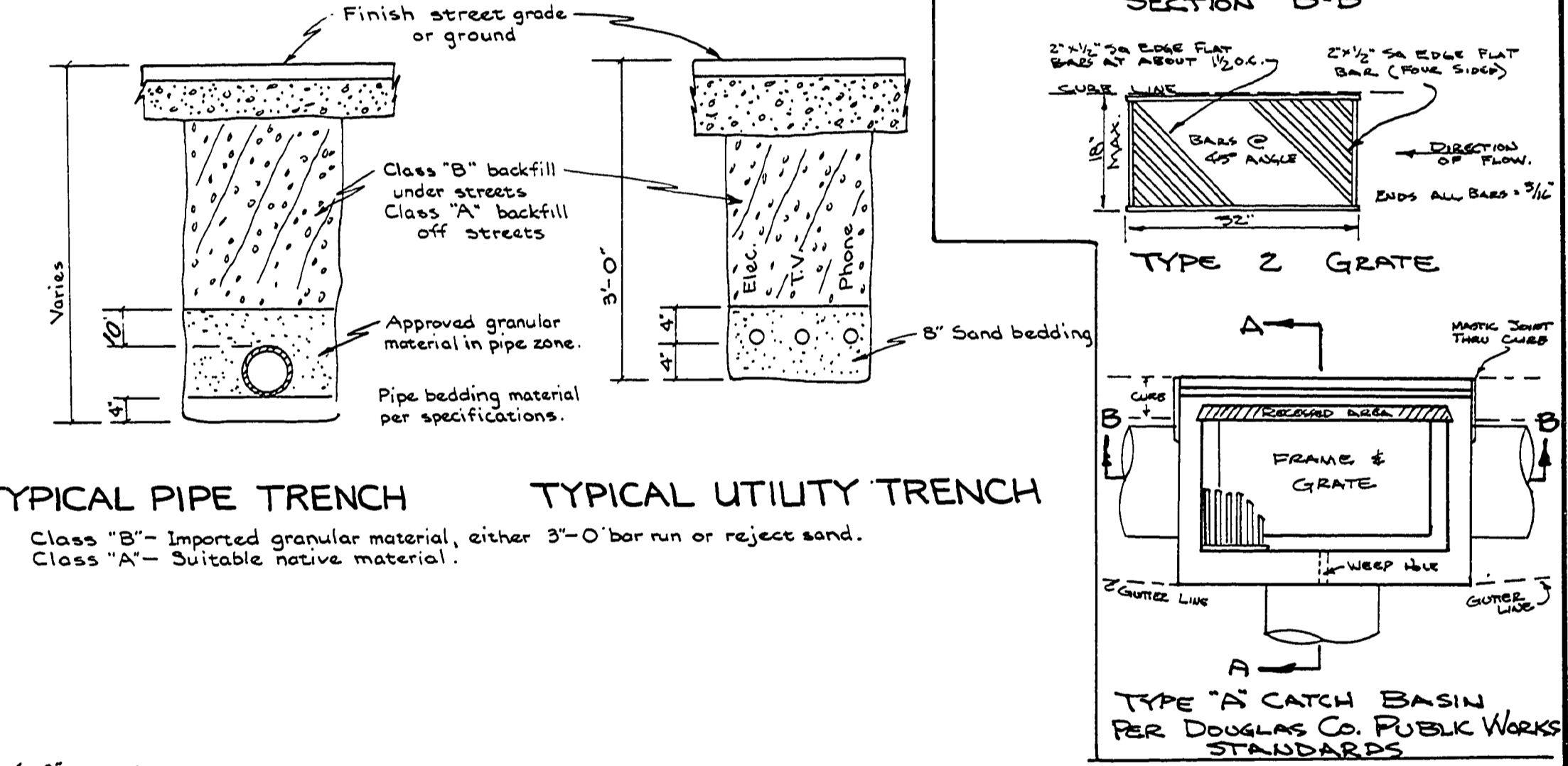
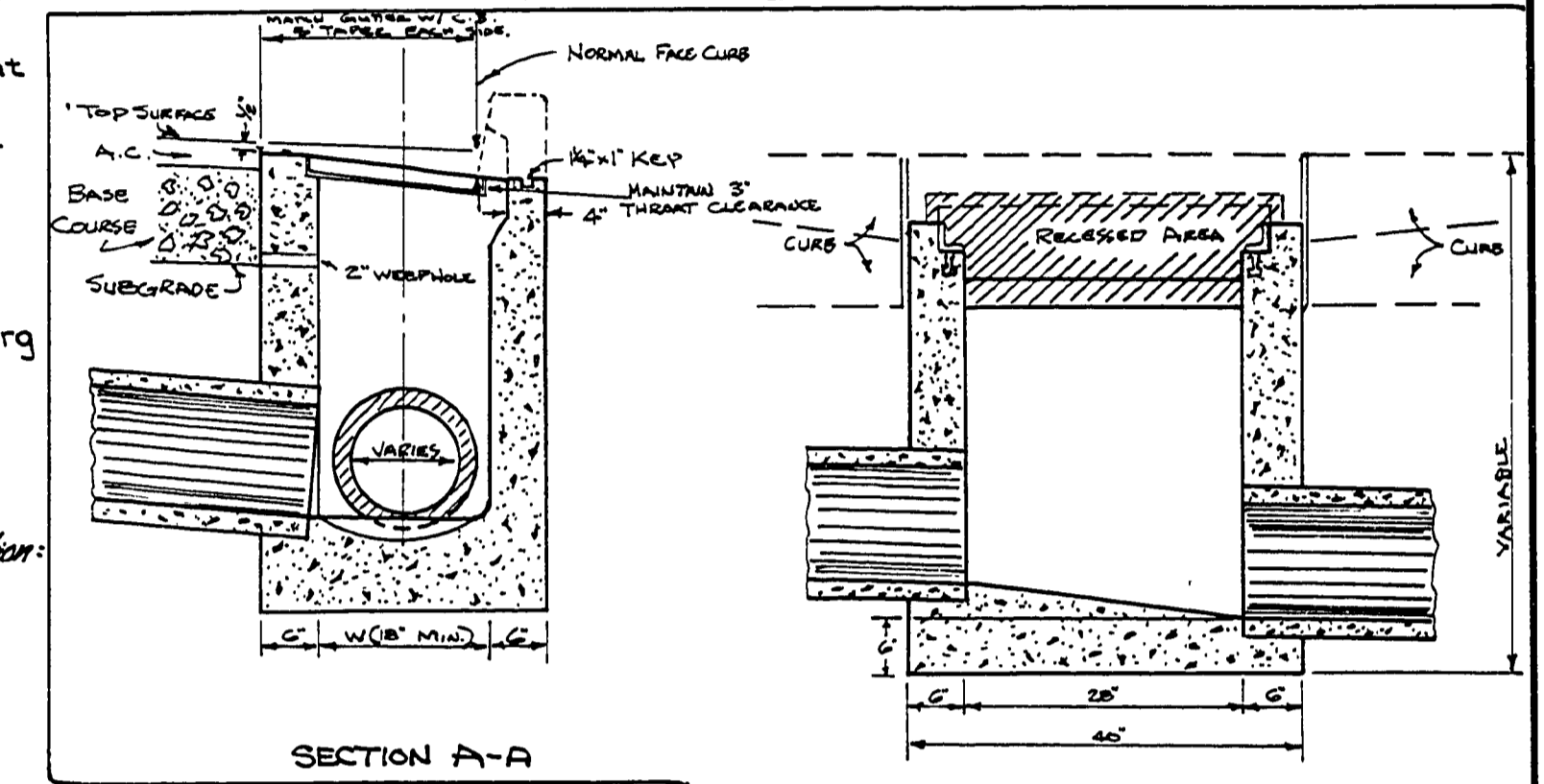
NOTES:

- GENERAL:**
- The contractor shall locate and protect all existing underground utilities. The contractor shall contact and coordinate with Pacific Power and Light and Pacific Northwest Bell Telephone companies to provide underground service to the subdivision.
 - Water & sewer pipe shall be installed in accordance with regulations and specifications of the agency governing the installation.
- STREETS & STORM SEWERS:**
- All work shall be in conformance with Douglas County Public Works Dept. Standard Specifications, unless otherwise noted.
 - Street subgrade and base shall be compacted to 95% relative compaction. Unstable or unsuitable material shall be removed and replaced with suitable selected material.
 - Concrete shall be class 5 (1 1/2" max. aggregate size) with 6 sacks cement per cubic yard of concrete, with a minimum compressive strength not less than 3000 p.s.i. at 28 days when tested in accordance with ASTM C-39-66.
- SANITARY SEWERS:**
- All work shall be in conformance with North Roseburg Sanitary District Standard Specifications, Details & Ordinances.
 - Sanitary sewer pipe shall be A.S.T.M. C-428 Type II Class 2400 asbestos cement.
 - Sanitary sewers shall be air or exfiltration tested in accordance with standard specifications, after compaction of backfill.
 - Trench backfill shall be Class "B" (Bank-run gravel passing 2 1/2" screen) under all streets, curb-to-curb, & Class "A" (suitable excavated material) elsewhere. All trenches will be water-settled.
 - Concrete shall be Class 5 (1 1/2" max. aggregate size) with 6 sacks cement per cubic yard of concrete, with a minimum compressive strength of not less than 3000 p.s.i. at 28 days when tested in accordance with A.S.T.M. C-39-66.
 - Whenever a crossing sewer line is less than 18" lower than a water line, the sewer line shall be ductile iron pipe 9" each side of the water line.
- WATER SYSTEM:**
- The contractor shall coordinate water service with the City of Roseburg Water Department.
- MISCELLANEOUS:**
- Fill site will be designated by owner.
 - The contractor shall contact the Douglas County Public Works Department Subdivision Coordinator Prior to start of the following phases of road construction:
 - Immediately prior to start of construction.
 - Any time construction is stopped, then resumed.
 - At completion of Clearing & Grubbing
 - At start of drainage & sewer work
 - Immediately prior to placing base rock
 - Immediately prior to placing asphalt conc. or PCC curbs
 - After paving is completed.

FILED
AUG 10 1987
COUNTY SURVEYOR
DOUGLAS COUNTY, ORE.



TYPICAL SEWER CONNECT

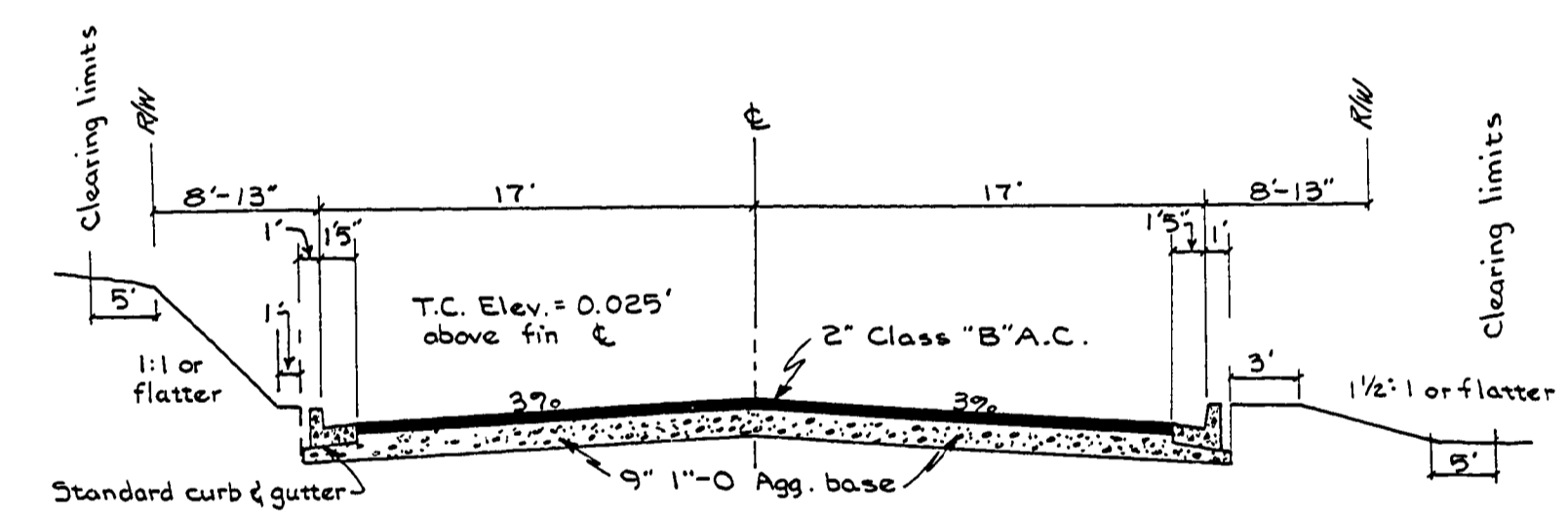


INDEX

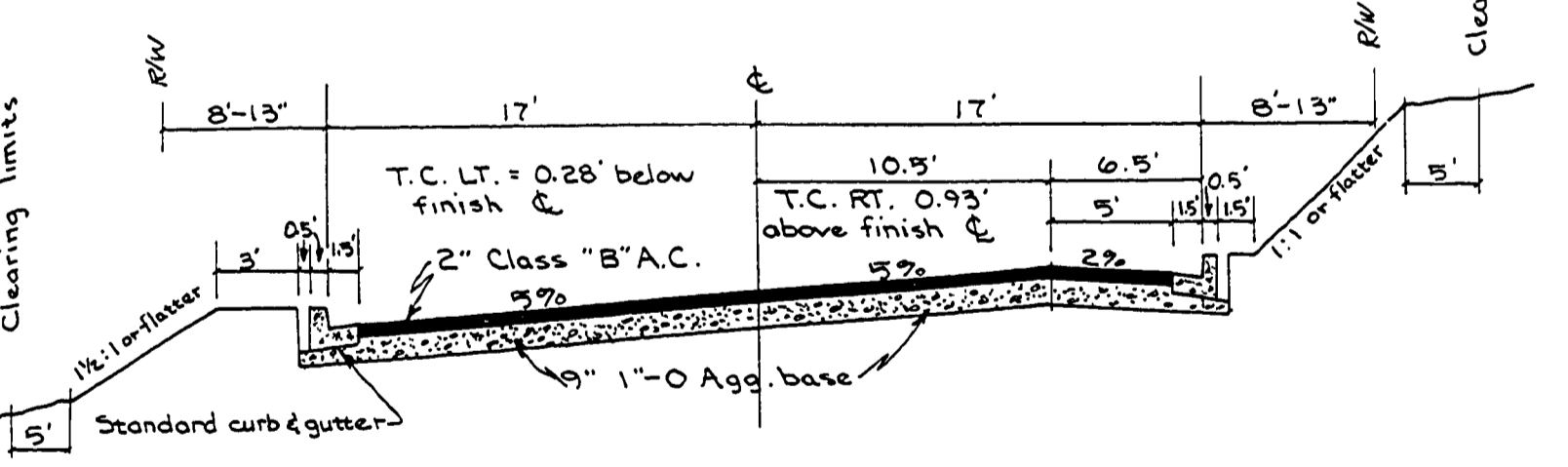
SHEET	TITLE
1. (CO. RD. NO'S)	Detail & index sheet
2. 217A & 225 A	Broad St. & General Ave. - Paving
3. 217C & 217 D	Kristin Ct. & Amanda St. - Paving
4. 217E & 217 F	Angela & Cordelia Cts. - Paving
5.	Broad St. & General Ave. - Sewers
6.	Kristin Ct. & Amanda St. - Sewers
7.	Angela & Cordelia Cts. - Sewers
8.	Grading Plan

DOUGLAS COUNTY
PUBLIC WORKS DEPT.

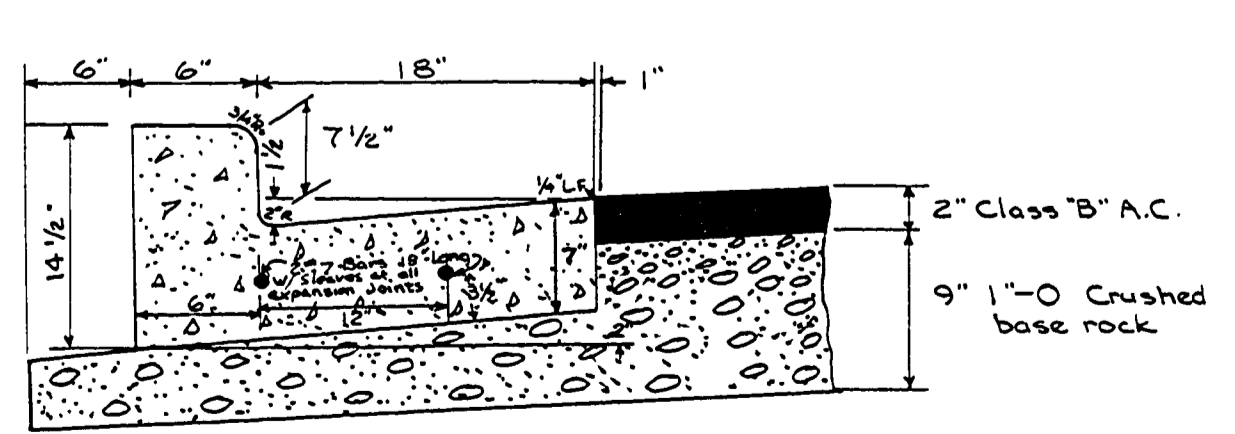
APPROVED
By: JS/BJP Date: 7/17/87



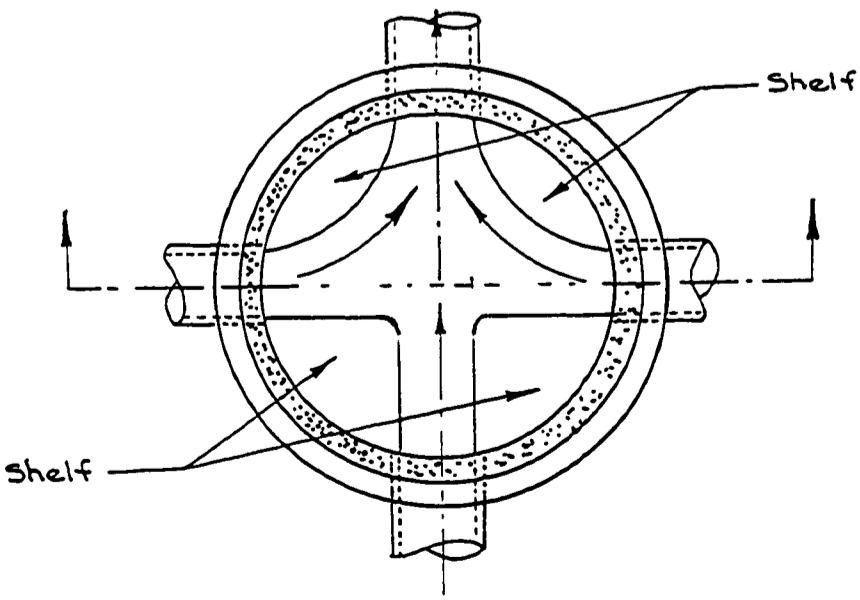
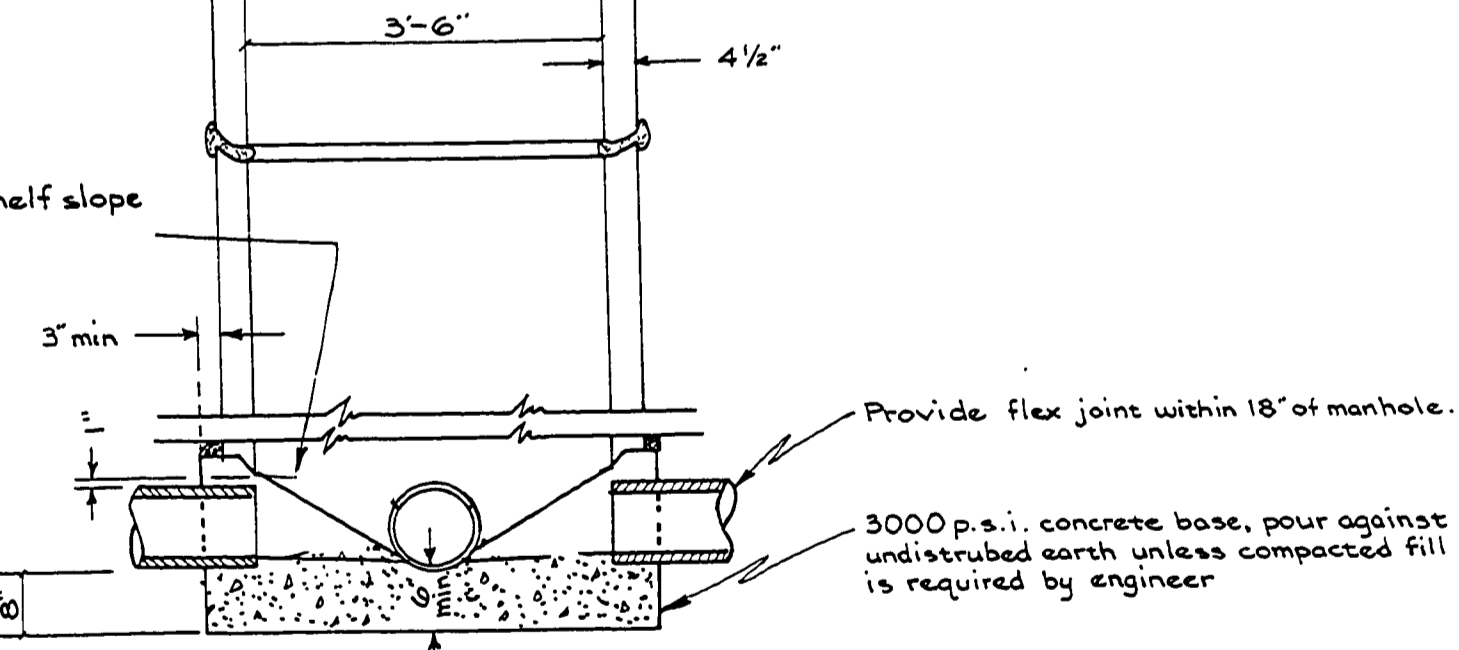
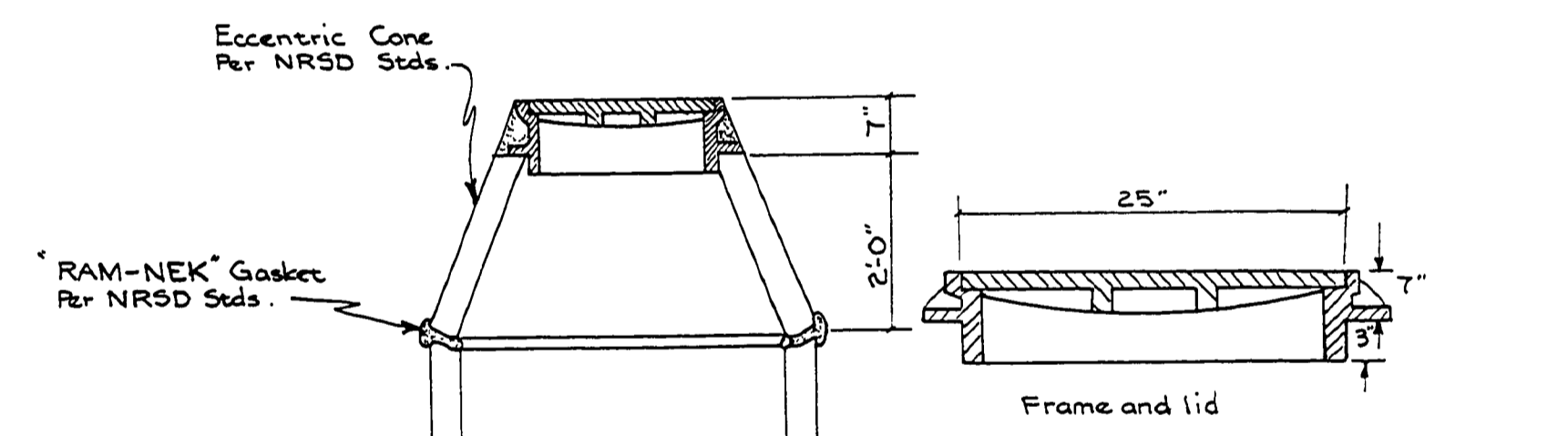
TYPICAL SECTION
Broad St. Begin project ~ 12+70
Amanda St. 10+00 West ~ End of project



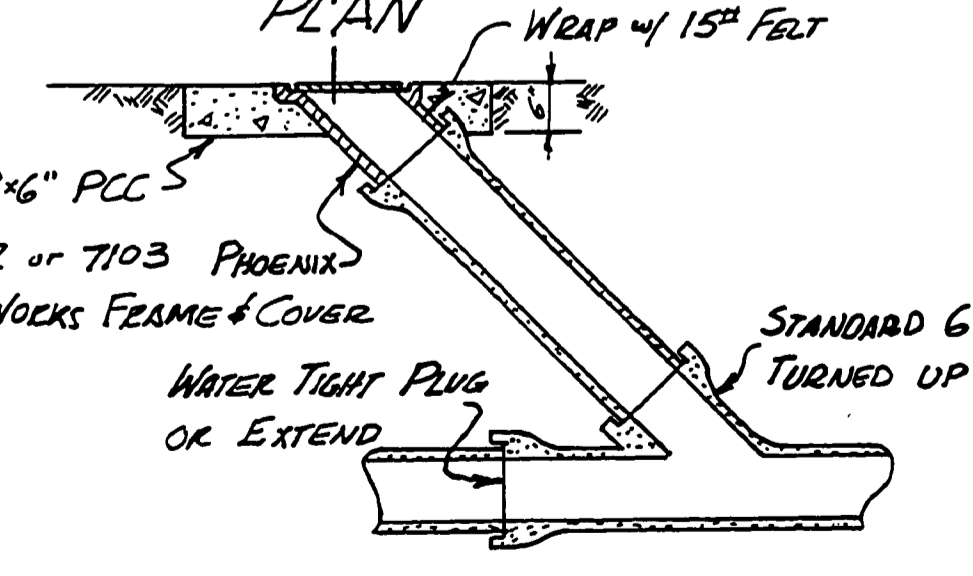
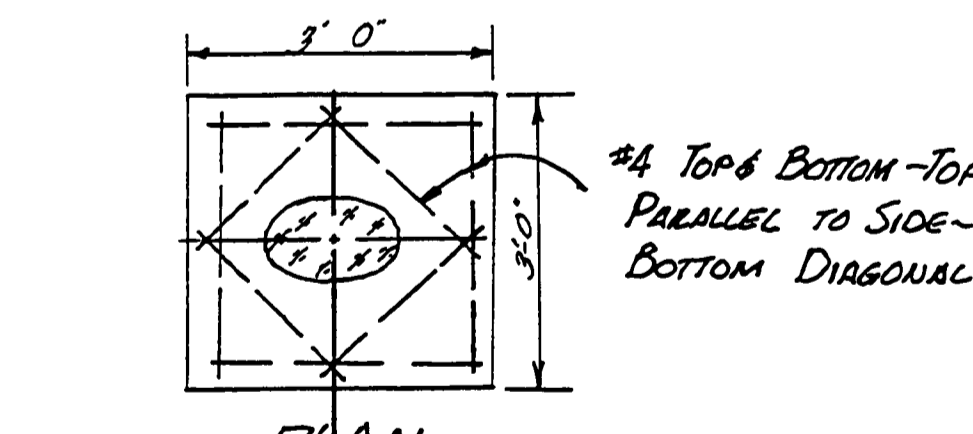
TYPICAL SECTION
Broad St. 12+70 ~ End of project
Amanda St. 10+00 East
Kristin, Angela, & Cordelia Courts



TYPICAL CURB SECTION
Douglas County Type "B"



PRECAST MANHOLE DETAIL



SECTION
SAN SEWER CLEANOUT

DETAIL & INDEX SHEET

WHITESSELL ESTATES

BHW ENGINEERING & SURVEYING
1205 SE. CO. RT.
ROSEBURG, OR 97470
TEL. 617-0165

DATE: 6/78
DRAWN BY: J
CHECKED: D
JOB NO.: 18-201
SHEET NO.: 1
OF 8 SHEETS

REGISTERED PROFESSIONAL ENGINEER
SUMNER L. SCHEIDT
OREGON
MAR. 2, 1959
EXPIRE 12/31/88

00880100