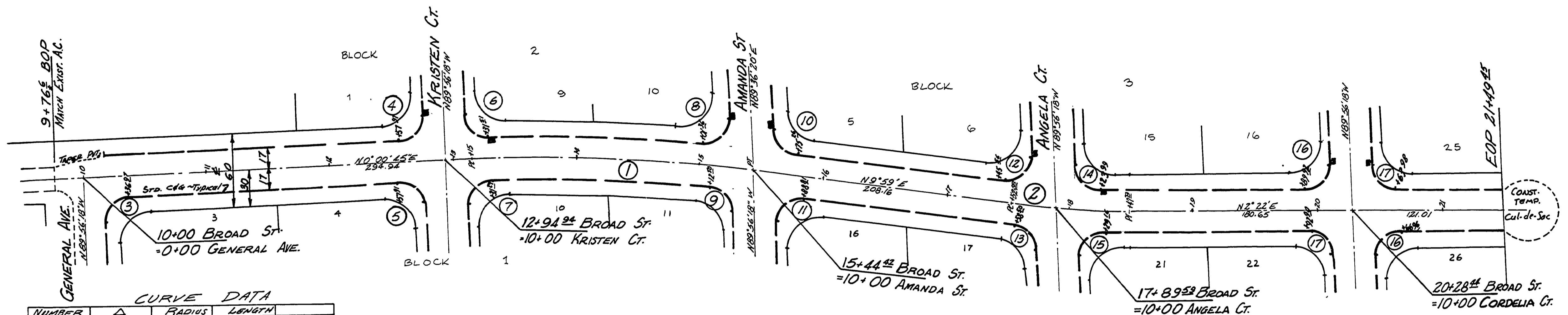


FIELD  
AUG 10 1987  
COUNTY SURVEYOR  
DOUGLAS COUNTY, ORE.

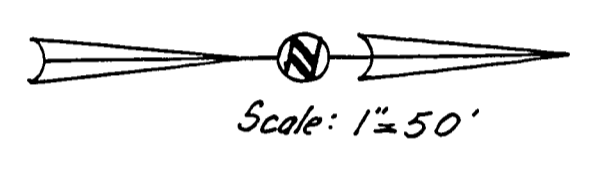
PLAN  
SURVEYED BY  
NOTE BOOK NO.  
ALIGNED CHECKED  
RT. OF WAY CHECKED



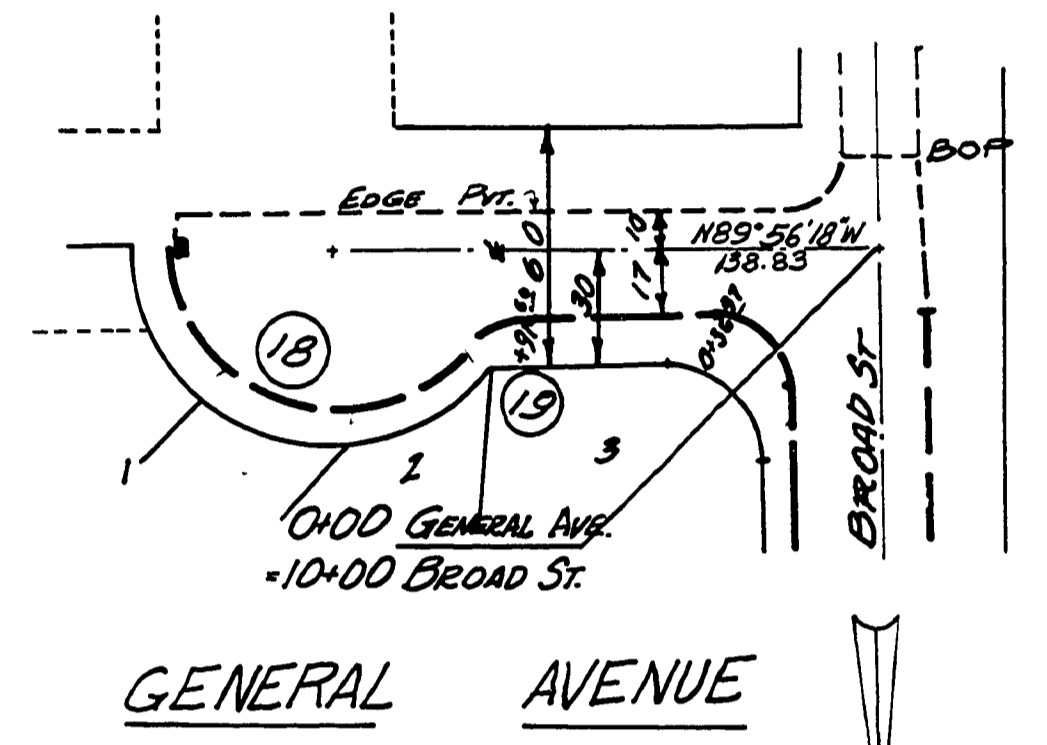
CURVE DATA

NUMBER	Δ	RADIUS	LENGTH	TYPE
1	9° 58' 15"	1318.32	229.42	E
2	7° 27' 00"	716.20	95.21	E
3	89° 27' 03"	20	31.40	Curb Return
4	89° 27' 03"	20	31.40	do
5	90° 02' 57"	20	31.43	do
6	89° 15' 54"	20	31.18	do
7	90° 42' 15"	20	31.66	do
8	98° 30' 23"	20	34.38	do
9	81° 27' 57"	20	27.72	do
10	78° 27' 20"	20	27.72	do
11	100° 21' 40"	20	35.04	do
12	99° 53' 18"	20	34.88	do
13	80° 04' 42"	20	27.95	do
14	85° 47' 42"	20	29.95	do
15	95° 47' 28"	20	32.74	do
16	92° 18' 18"	20	32.22	do
17	87° 41' 42"	20	30.61	do
18	141° 55' 37"	40	99.08	Col. of Sec.
19	51° 55' 37"	20	18.13	Return

**BROAD STREET**

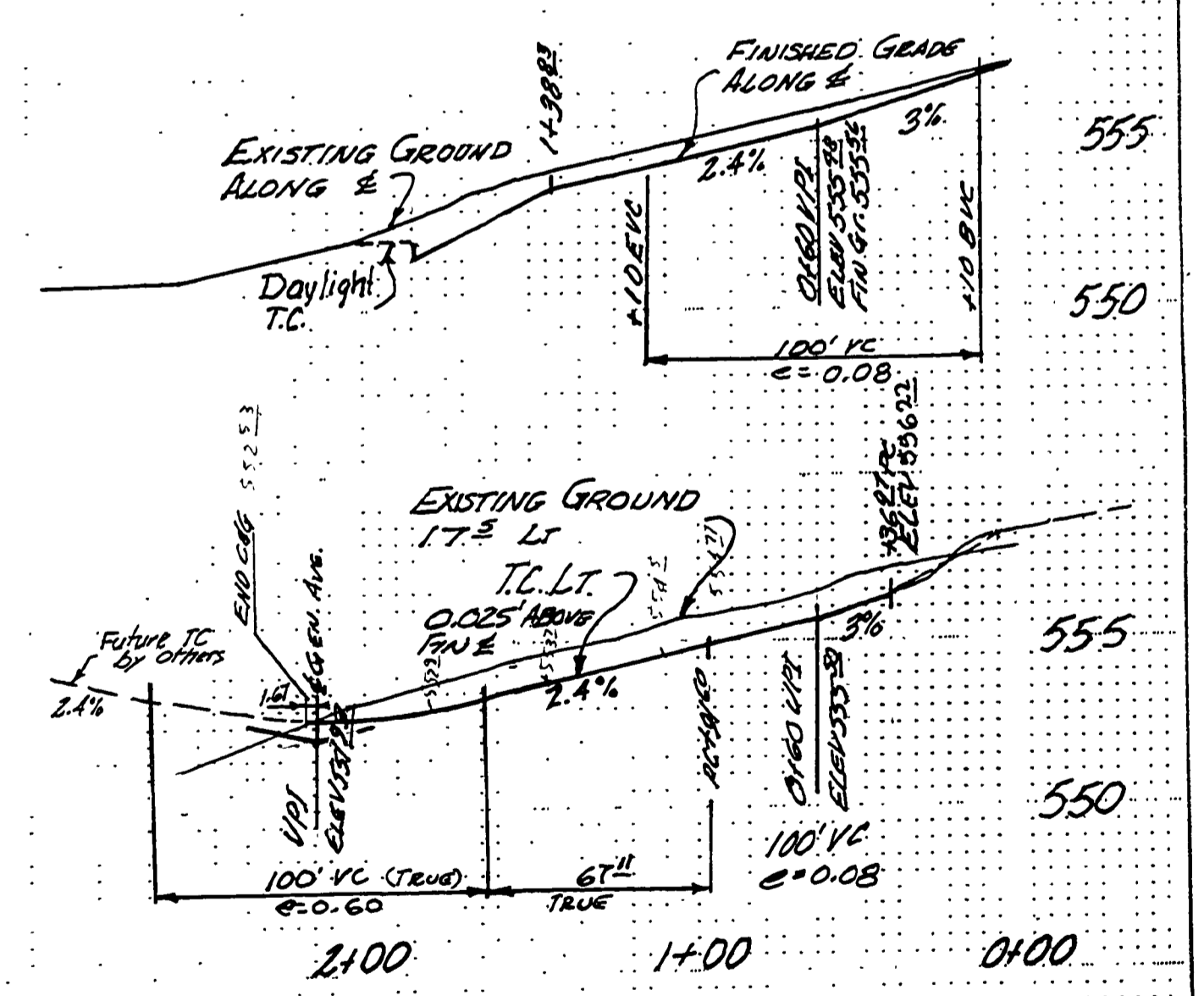
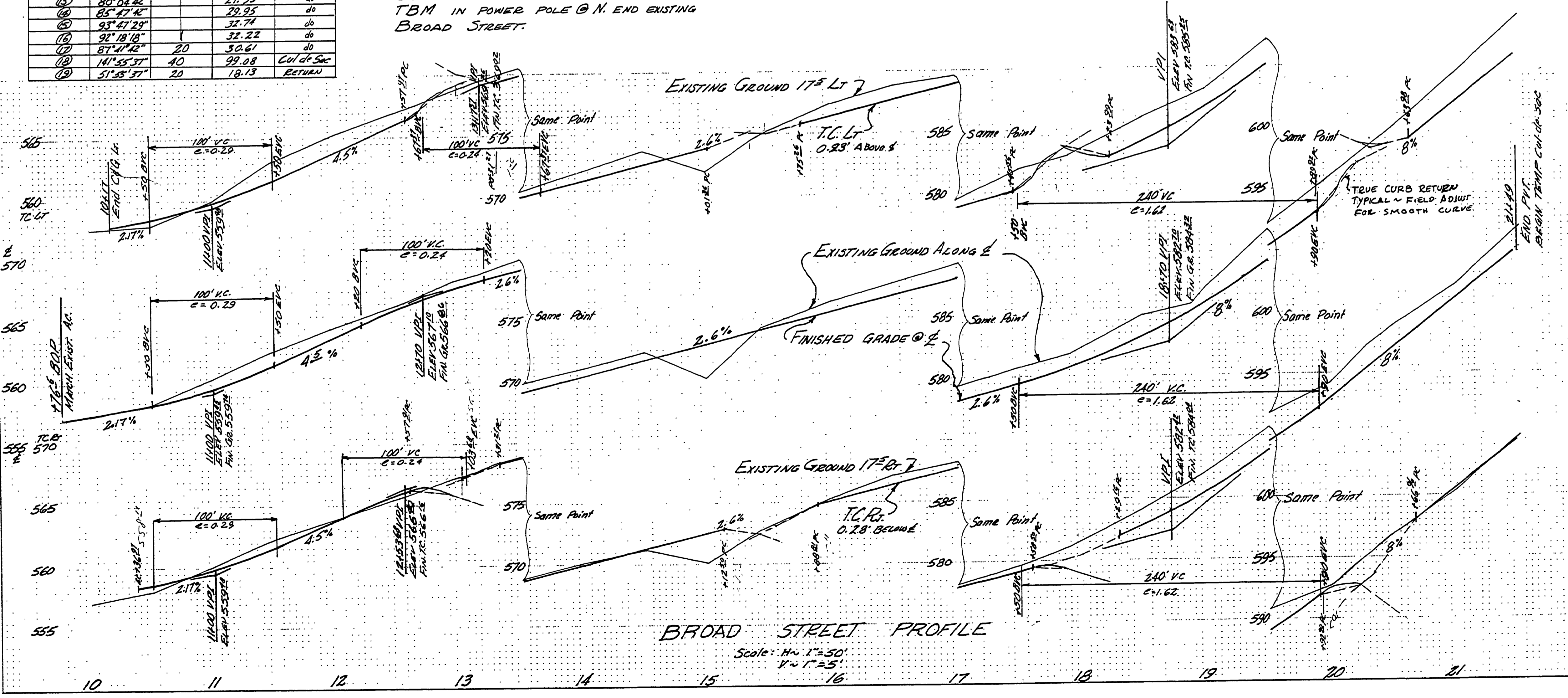


BENCH MARK - ELEV = 557.70'  
DOUGLAS COUNTY PUBLIC WORKS DEPARTMENT  
TBM IN POWER POLE @ N. END EXISTING  
BROAD STREET.



Scale: 1" = 50'

PROFILE  
SURVEYED BY  
NOTE BOOK NO.  
ALIGNED CHECKED  
STRUCTURE NOTATIONS CHECKED



**BROAD ST. & GENERAL AVE. - PAVING**

WHITESELL ESTATES

BHW ENGINEERING & SURVEYING  
1205 SE COURT  
ROSEBURG, OR. 97130  
TEL. 673-0165

DATE: 8/78  
DRAWN BY:  
CHECKED BY:  
SCALE: 1/8" = 1'-0"  
SHEET NO. 2  
OF 3 SHEETS