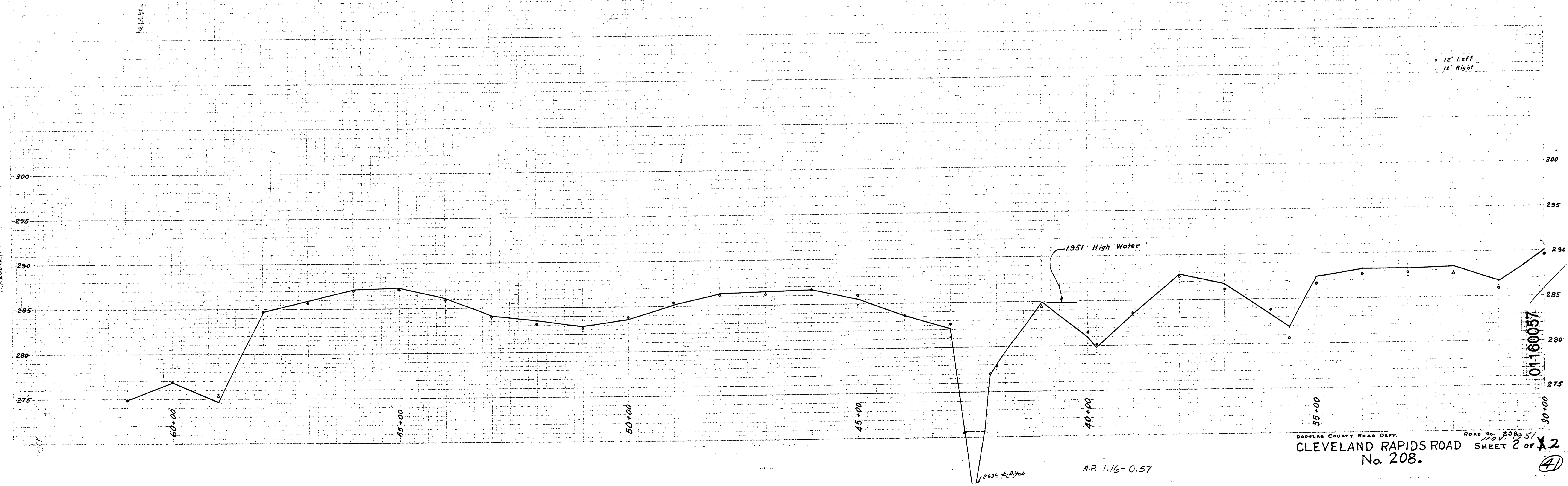
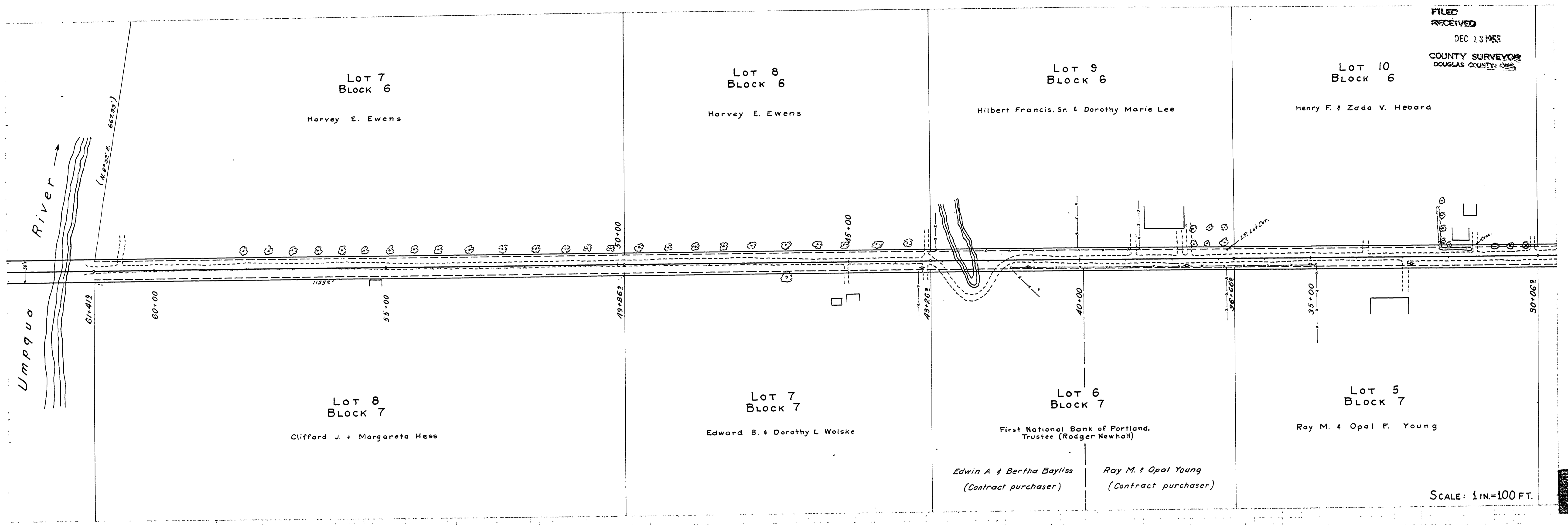


FILED  
RECEIVED  
DEC 13 1957  
COUNTY SURVEYOR  
DOUGLAS COUNTY, ORE.



Crowder & Gorman  
C. S. Coulter  
11-7-57  
11-11-57

208 L.

DOUGLAS COUNTY ROAD DEPT.  
CLEVELAND RAPIDS ROAD  
No. 208.  
ROAD No. 208 S.  
SHEET 2 OF 2  
160057  
M.P. 1.16-C.57  
4