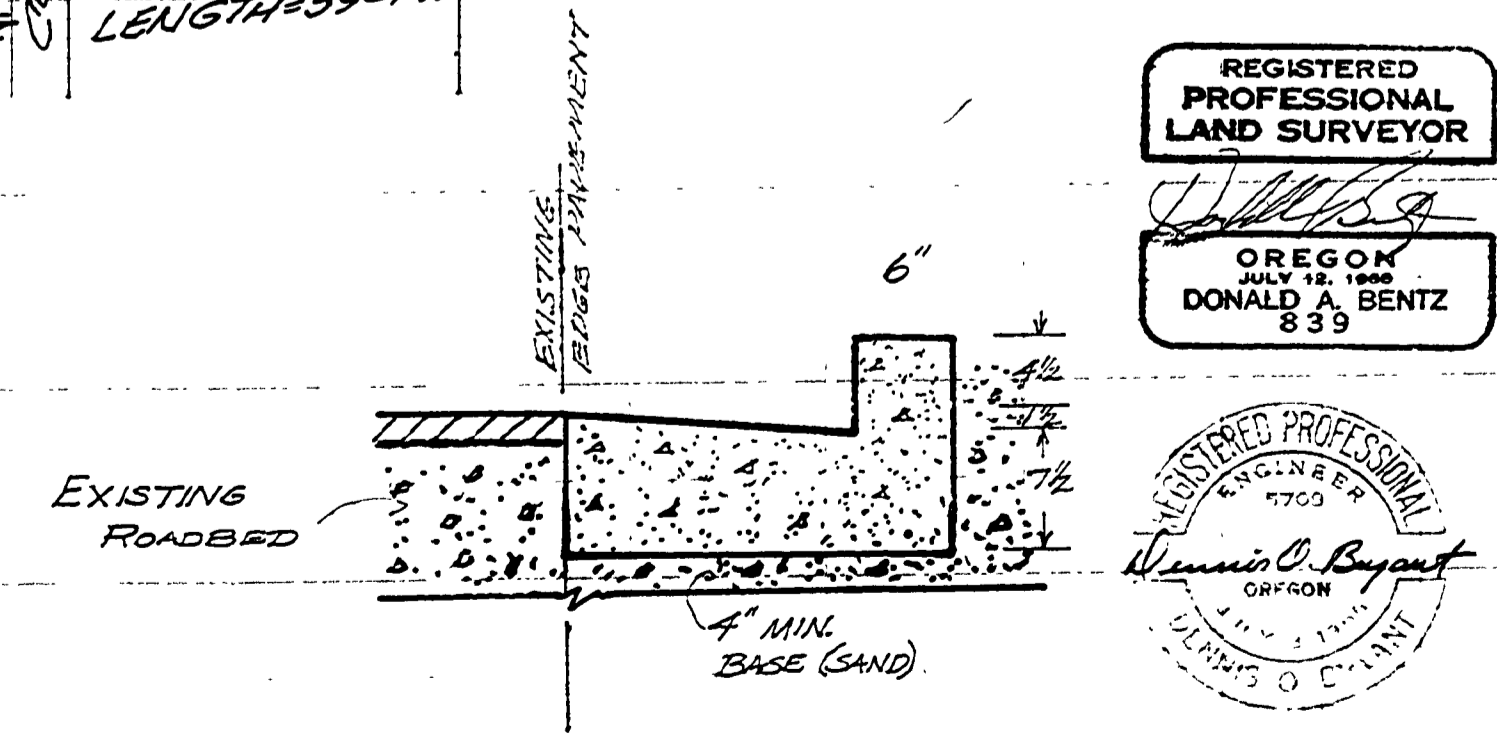
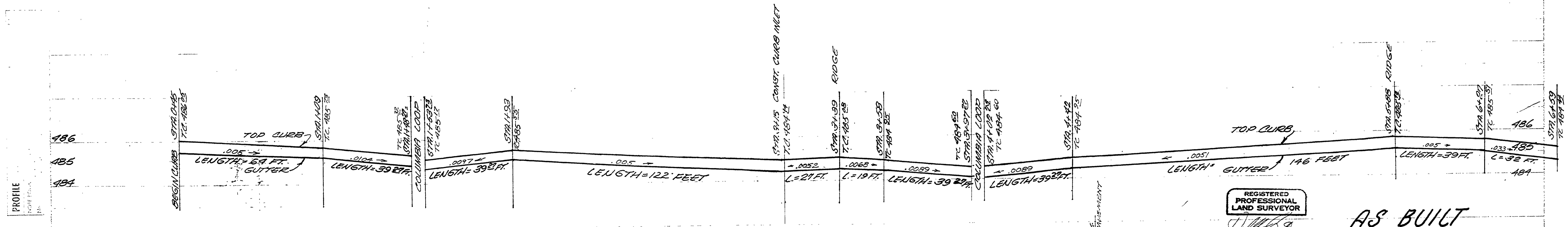
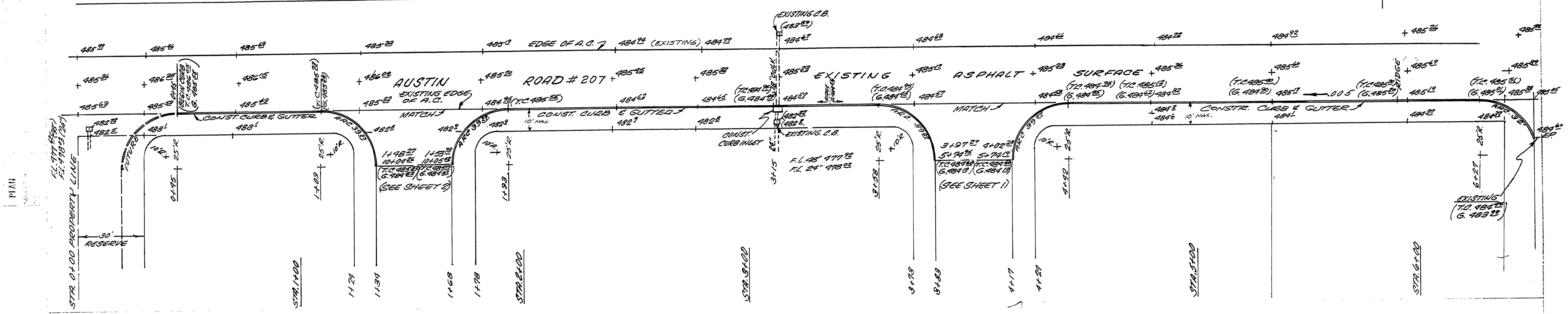


FILED
AUG 10 1987
COUNTY SURVEYOR
DEUELAS COUNTY, ORE.

SCALE: 1" = 20' HORIZ.
1" = 2' VERT.



REGISTERED PROFESSIONAL LAND SURVEYOR
DONALD A. BENTZ
839

REGISTERED PROFESSIONAL SURVEYOR
DONALD A. BENTZ
839

AS BUILT

PLAN AND PROFILE FOR ADDITION TO ROLLING HILLS SUBDIV'N.			
DONALD A. BENTZ, INC. POST OFFICE BOX 501 WINCHESTER, ORE. 97159 (503) 673-0166			
SCALE: SEE NOTE	DATE: MAY 29, 1986	DRAWING: D.S.	CHECKED SHEET: 3054 1-87
AUSTIN ROAD NO. 207		T28-L 5, 10	

00490037