

APPROVED BY ROSEBURG PLANNING COMMISSION

BY Paul J. Elliott PRESIDENT
Nita Knight SECRETARY

DATED October 24, 1949

RESUBDIVISION OF

GADDIS PLAT "A"

DOUGLAS COUNTY, OREGON

SEC. 13, TWP. 27 S., RG. 6 W. W. M.

SCALE: 1 INCH = 100 FT.

6/29
HICKS STREET - CO. ROAD 202
SHOWN IN RED, ADOPTED BY
RESOLUTION, OCT. 13th, 1949

W. B. Bussanbark CO. JUDGE
D. G. Baker CO. COMMISSIONER
P. G. Baker CO. COMMISSIONER

CERTIFICATE OF SURVEYOR

I, Edwin S. Woodford, being first duly sworn, depose and say, that I have surveyed and marked with proper monuments the lands shown on the annexed plat of which the following is a true and correct description: Beginning at a point from which the North west corner of J. Huntly D.L.C. #256 in Township 27 South, Range 6 West of the Willamette Meridian bears North 85° 36' West 658.30 feet; thence, S 2° 36' W, 1202.30 feet; thence, S 2° 19' W 673.29 feet; thence, S 87° 59' E, 656.04 feet; thence, N 2° 50' W, 74.42 feet; thence, N 0° 35' E, 1176.85 feet; thence, N 88° 00' W, 139.63 feet; thence, N 0° 31' E, 410.00 feet; thence, N 88° 00' W, 392.65 feet; thence, N 2° 36' E, 214.98 feet; thence, N 88° 00' W, 40.23 feet to the place of beginning and containing 21.32 Acres more or less.

Edwin S. Woodford
CIVIL ENGINEER

Edwin S. Woodford
CIVIL ENGINEER

DEDICATION

KNOW ALL MEN BY THESE PRESENTS that we, HARRY O. PARGETER, and MARY L. PARGETER, wife, and WILLIAM M. BERRETTSEN, and FRANCES M. BERRETTSEN, wife, owners of the lands shown on the annexed plat, have caused the same to be surveyed and platted as and by the name of, GADDIS PLAT "A", and we hereby dedicate to the public use forever the roads shown hereon.

Harry O. Pargeter
HARRY O. PARGETER
Mary L. Pargeter
MARY L. PARGETER
William M. Berretsen
WILLIAM M. BERRETTSEN
Frances M. Berretsen
FRANCES M. BERRETTSEN

ACKNOWLEDGMENT

On the 24th day of July, 1949, before me appeared, HARRY O. PARGETER, and MARY L. PARGETER, wife, and WILLIAM M. BERRETTSEN, and FRANCES M. BERRETTSEN, wife, all to me personally known, who being duly sworn did say, that they are the owners of the lands shown on the annexed plat and acknowledged that the adjacent instrument was their free act and deed.

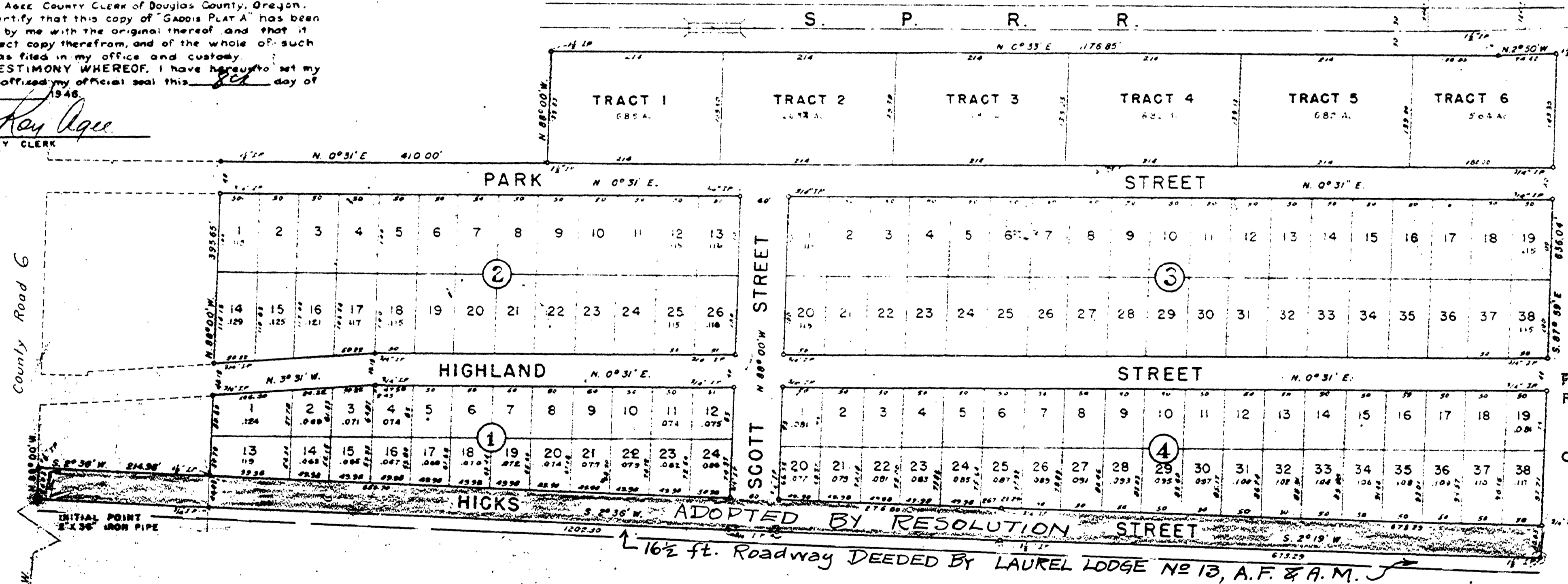
Ray Lape
COUNTY CLERK

Subscribed and sworn to before me this 20th day of June, 1949.

Ray Lape
COUNTY CLERK

STATE OF OREGON)
COUNTY OF DOUGLAS)
I, Ray Lape, County Clerk of Douglas County, Oregon, hereby certify that this copy of "Gaddis Plat A" has been compared by me with the original thereof and that it is a correct copy therefrom, and of the whole of such original as filed in my office and custody.
IN TESTIMONY WHEREOF, I have hereunto set my hand and official seal this 24th day of July, 1949.

Ray Lape
COUNTY CLERK



FILED
RECEIVED
DEC 5 1949
COUNTY SURVEYOR
DOUGLAS COUNTY, ORE.

APPROVALS

N.W. Cor. J. HUNTLY D.L.C. #256
Conc. monument

APPROVED July 6, 1949
W. B. Bussanbark
COUNTY JUDGE

APPROVED July 6, 1949
W. B. Bussanbark
COUNTY ASSESSOR

APPROVED July 6, 1949
Edwin S. Woodford
COUNTY SURVEYOR

APPROVED JULY 6, 1949
W. B. Bussanbark
ROSEBURG CITY ENGINEER

FILED July 8th, 1949
Ray Lape
COUNTY CLERK

Not a Co. Rd.

Rd. 202

HICKS 000

335

335