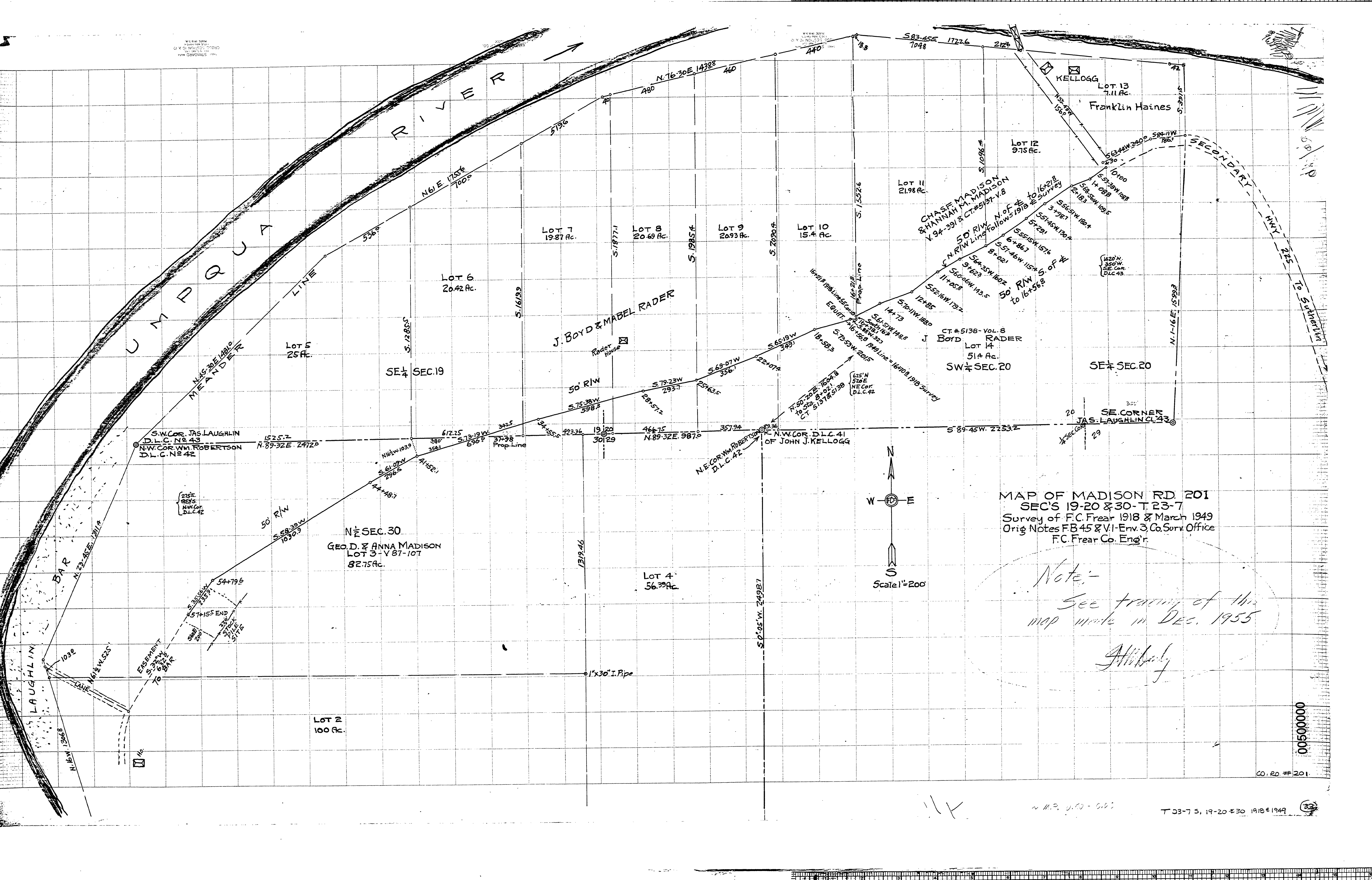


WORK SHEET  
NO. 100-1000  
OF A SET OF PLANS  
FOR THE  
CONSTRUCTION OF  
A ROAD



UMPUQA RIVER

UMPUQA RIVER

MEANDER LINE

J. BOYD & MABEL RADER

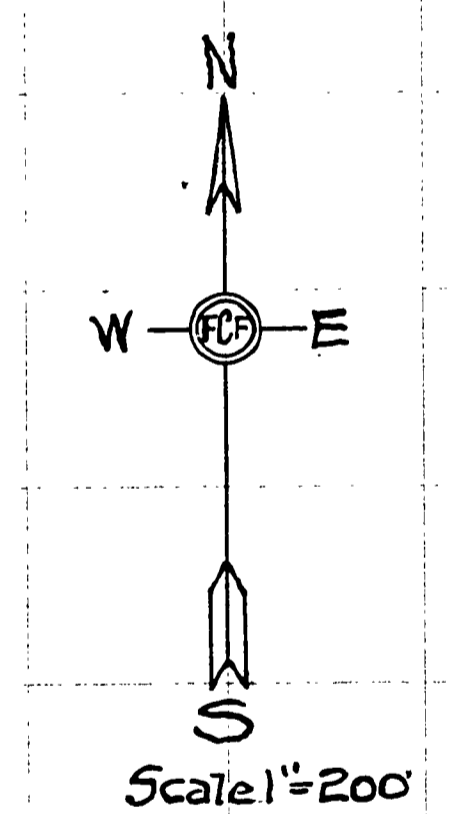
Geo. D. & Anna Madison  
LOT 3 - Y 87-107  
82.75 Ac.

CHASE MADISON  
& HANNAN M. MADISON  
K. 94-391 & CT. #5137-1.8

Franklin Haines

MAP OF MADISON RD 201  
SECS 19-20 & 30-T 23-7  
Survey of F.C. Frear 1918 & March 1949  
Orig Notes FB 45 & VI-Env. 3 Co. Surv. Office  
F.C. Frear Co. Eng'r.

Note:-  
See framing of this  
map made in Dec. 1955  
J. H. Frear



00500000  
CO. RD # 201