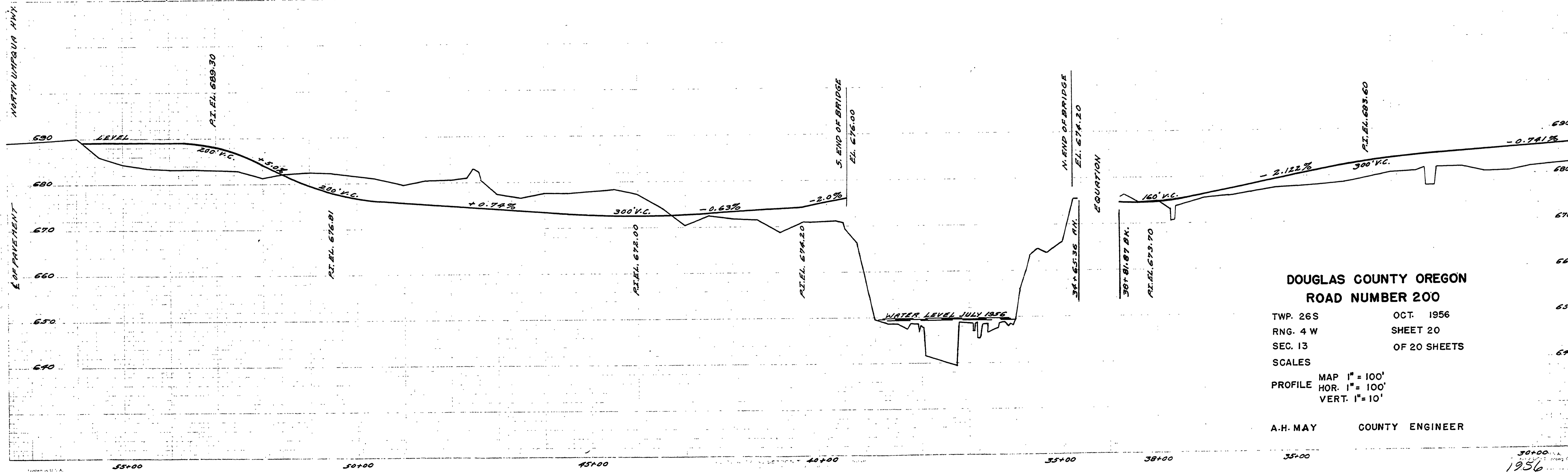


FILED
RECEIVED
JAN 17 1956
COUNTY SURVEYOR
DOUGLAS COUNTY, ORE.



DOUGLAS COUNTY OREGON
ROAD NUMBER 200

TWP. 26S OCT. 1956
 RNG. 4 W SHEET 20
 SEC. 13 OF 20 SHEETS

SCALES
 PROFILE MAP 1" = 100'
 HOR. 1" = 100'
 VERT. 1" = 10'

A.H. MAY COUNTY ENGINEER

M.P. 16.83-16.26

1956
 G.Rd. #200 sht. 20 of 20

16831626