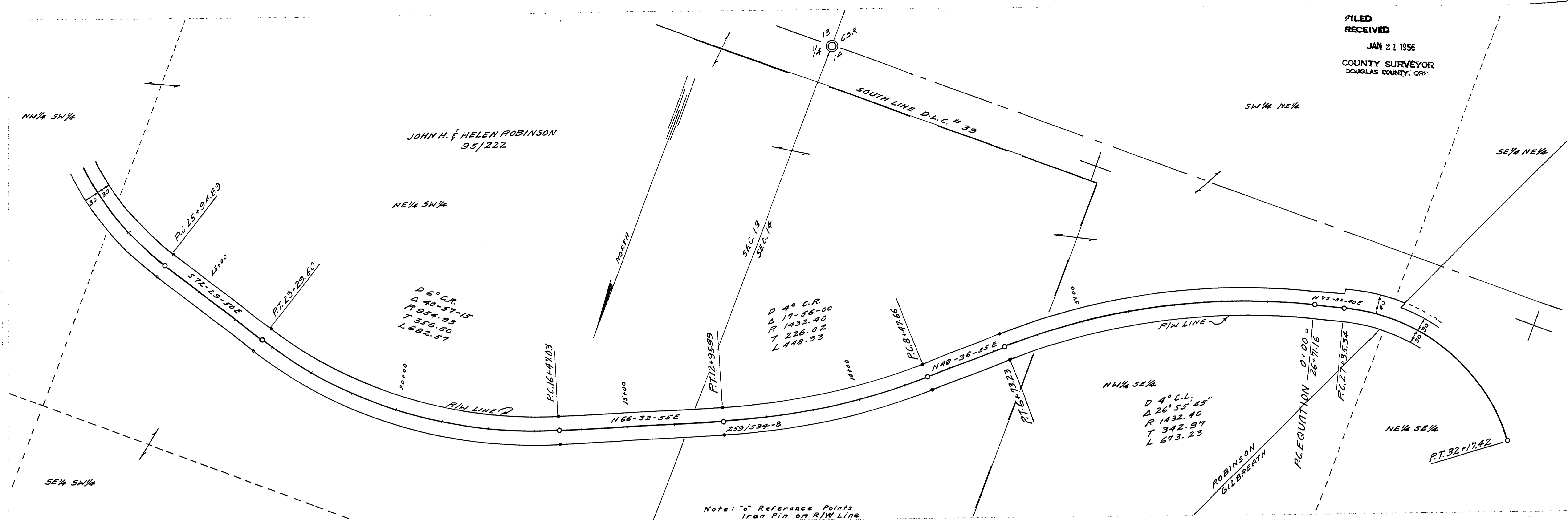
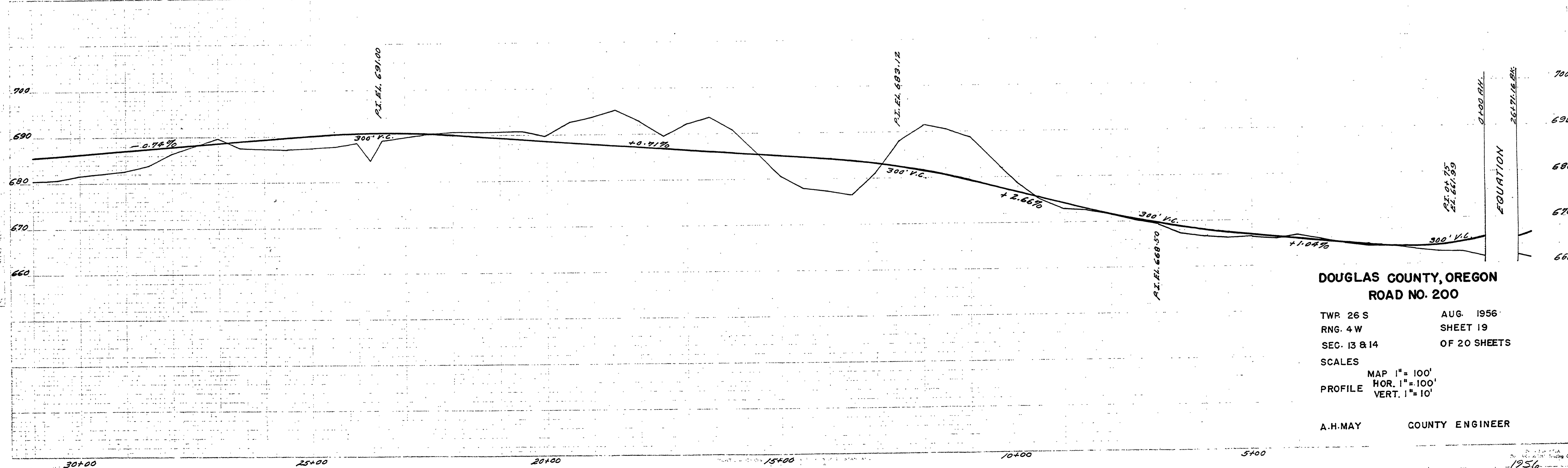


FILED  
RECEIVED  
JAN 21 1956  
COUNTY SURVEYOR  
DOUGLAS COUNTY, OR.



Note: "o" Reference Points  
Iron Pin on R/W Line



DOUGLAS COUNTY, OREGON  
ROAD NO. 200  
TWP 26 S AUG. 1956  
RNG. 4 W SHEET 19  
SEC. 13 & 14 OF 20 SHEETS  
SCALES  
MAP 1" = 100'  
PROFILE HOR. 1" = 100'  
VERT. 1" = 10'  
A.H.MAY COUNTY ENGINEER

16261567

M.P. 16.26-15.67

Co. Rd # 200 sht. 19 of 20 31