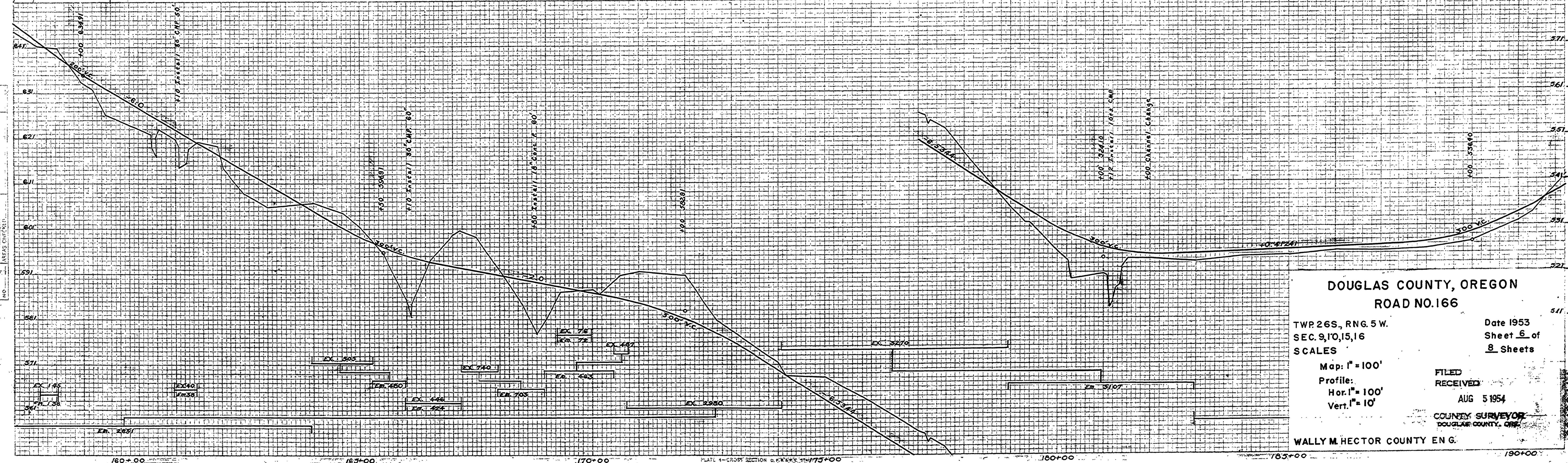
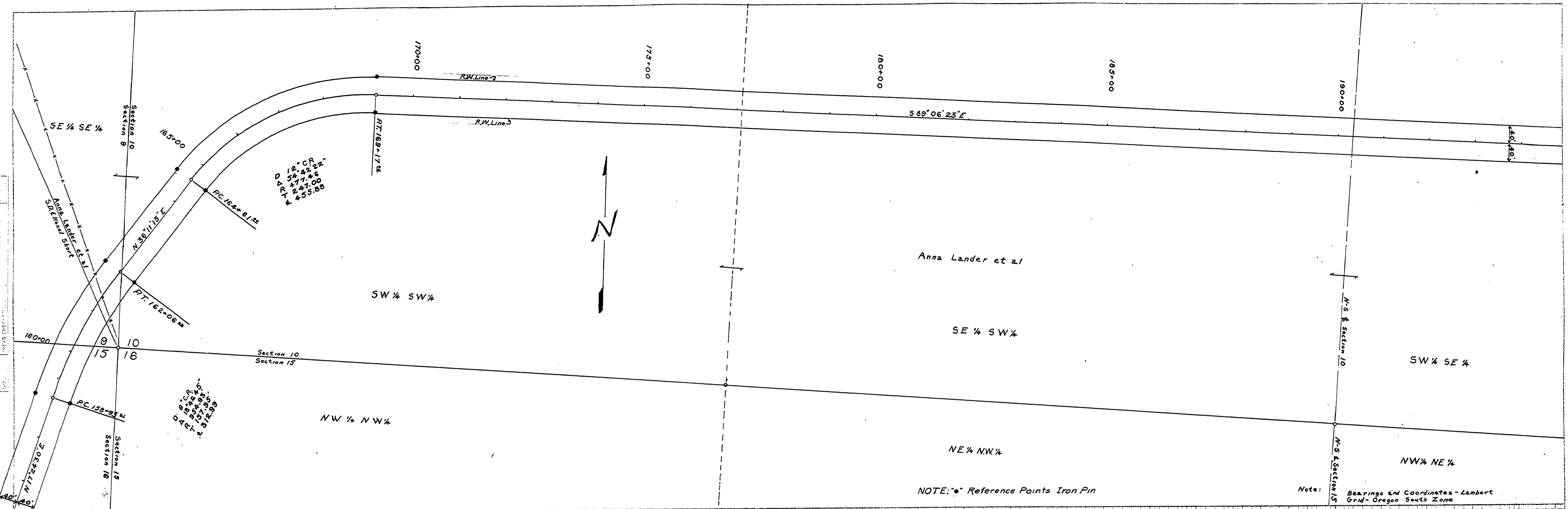


FINAL SURVEY
 NOTES:
 1. ALL BEARINGS AND DISTANCES ARE AS SHOWN.
 2. ALL DISTANCES ARE IN FEET.
 3. ALL BEARINGS ARE TRUE BEARINGS.
 4. ALL CORNERS ARE IRON PINS.
 5. ALL CORNERS ARE TO BE SET AT THE POINTS SHOWN.

ORIGINAL SURVEY
 NOTES:
 1. ALL BEARINGS AND DISTANCES ARE AS SHOWN.
 2. ALL DISTANCES ARE IN FEET.
 3. ALL BEARINGS ARE TRUE BEARINGS.
 4. ALL CORNERS ARE IRON PINS.
 5. ALL CORNERS ARE TO BE SET AT THE POINTS SHOWN.



DOUGLAS COUNTY, OREGON
ROAD NO. 166

TWP 26S., RNG. 5W.
 SEC. 9, 10, 15, 16

Date 1953
 Sheet 6 of 8 Sheets

Map: 1" = 100'
 Profile:
 Hor. 1" = 100'
 Vert. 1" = 10'

FILED
 RECEIVED
 AUG 5 1954
 COUNTY SURVEYOR
 DOUGLAS COUNTY, ORE.

WALLY M. HECTOR COUNTY ENG.

PLATE 4 - CROSS SECTION OF ROAD NO. 166
 REUFEL & SLESSER CO., NEW YORK

M.P. 3.42-4.14

1953
 rd. 200
 6. 11
 12. 6 of 8
 (12)

03420414