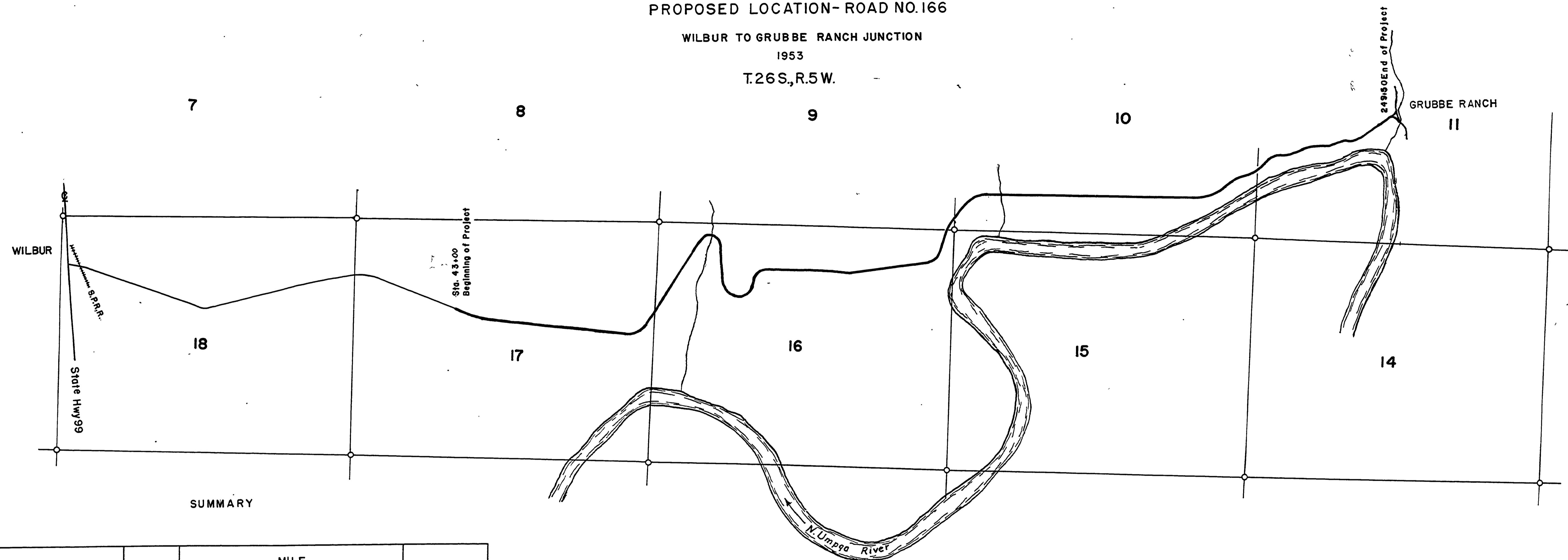
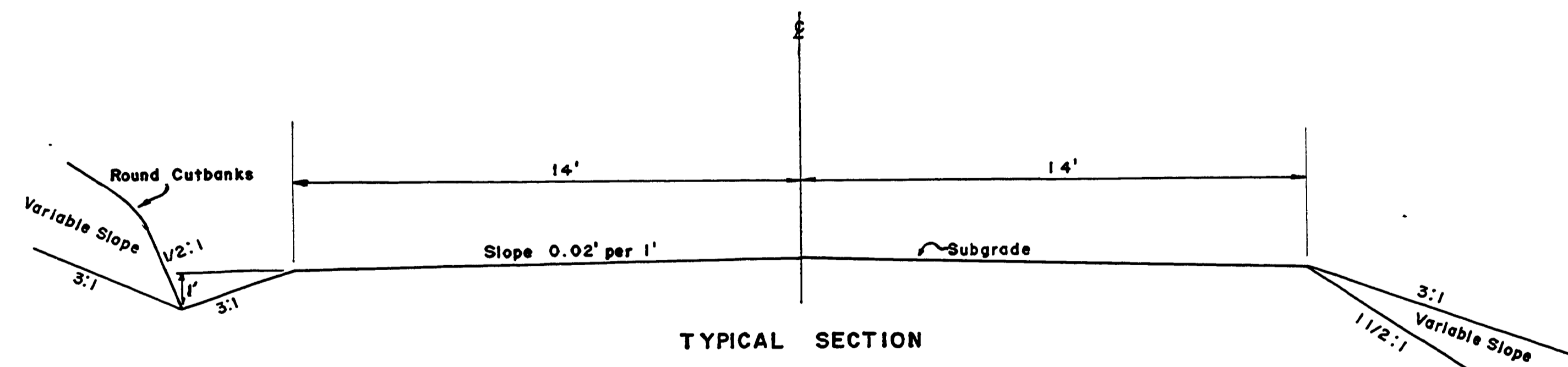


DOUGLAS COUNTY, OREGON
 COUNTY ROAD DEPT.
 PROPOSED LOCATION- ROAD NO. 166
 WILBUR TO GRUBBE RANCH JUNCTION
 1953
 T.26S.,R.5W.



SUMMARY

ITEM	UNIT	MILE				TOTAL QUANTITY
		1	2	3	4	
CLEARING	LUMP SUM	\$800	\$2000	\$1500	\$700	\$5000
EXCAVATION	CU. YDS.	13,200	27,600	13,700	24,900	79,400
12" PIPE	LINEAL FT.	60	226	136	110	532
18" PIPE	LINEAL FT.	90	132	80	96	398
24" PIPE	LINEAL FT.	60			70	130
30" PIPE	LINEAL FT.			110		110
48" PIPE	LINEAL FT.		84			84
60" PIPE	LINEAL FT.	70				70
120" PIPE	LINEAL FT.			70	80	150
CATTLE PASS	LUMP SUM		1		2	3
BASE ROCK	CU. YDS.	3000	3000	3000	3000	12,000
SURFACE ROCK	CU. YDS.	1000	1000	1000	1000	4000



TYPICAL SECTION

FILED
 RECEIVED
 AUG 5 1954
 COUNTY SURVEYOR
 DOUGLAS COUNTY, ORE.

M.P. 0.81-4.72

200 1953
 G. R. # 166
 sheet 1 of 4

00810472

(13)