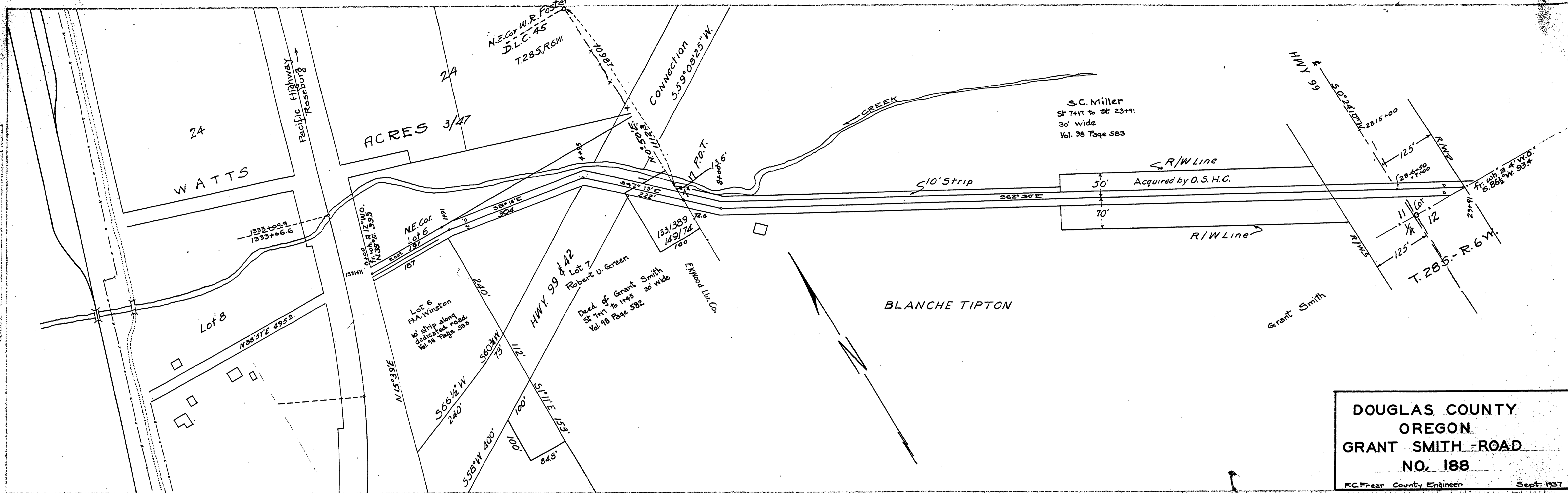


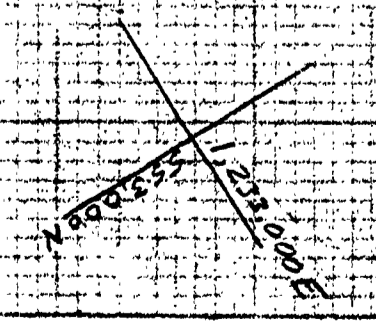
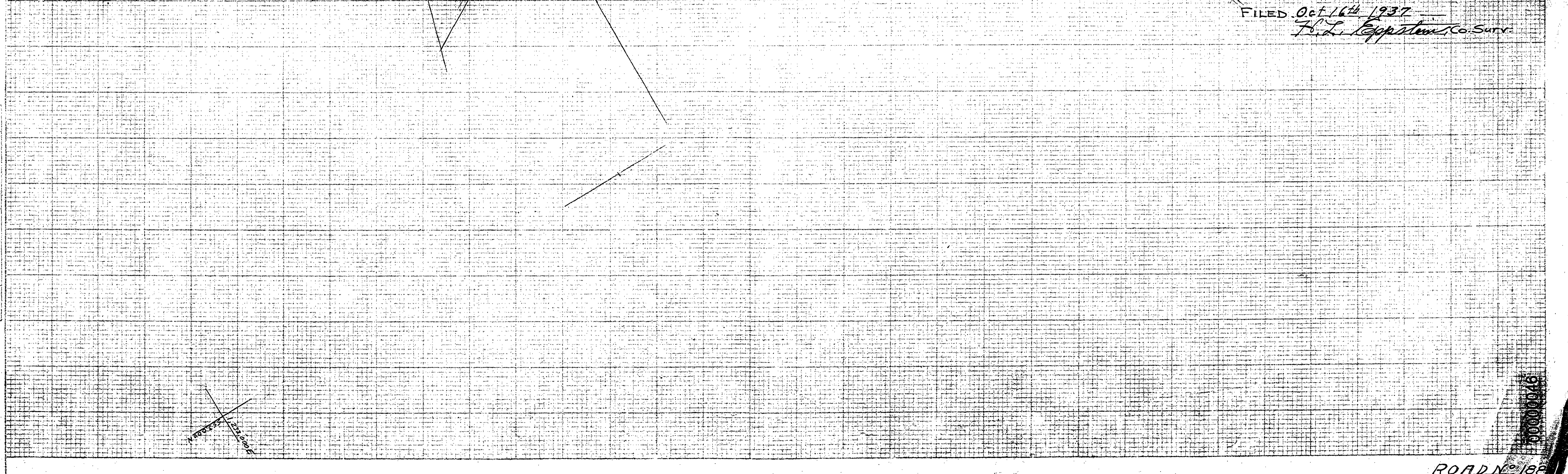
PLAN
SUPPLEMENT
NOT RECORDED
DATE OF REVISION
BY



DOUGLAS COUNTY
OREGON
GRANT SMITH ROAD
NO. 188
R.C. Freear County Engineer Sept 1937

FILED Oct 16th 1937
F. L. Eggenstein Co. Surv.

PROFILE
BY
DATE
REVISIONS
NO. 1
NO. 2
NO. 3
NO. 4
NO. 5
NO. 6
NO. 7
NO. 8
NO. 9
NO. 10
NO. 11
NO. 12
NO. 13
NO. 14
NO. 15
NO. 16
NO. 17
NO. 18
NO. 19
NO. 20
NO. 21
NO. 22
NO. 23
NO. 24
NO. 25
NO. 26
NO. 27
NO. 28
NO. 29
NO. 30
NO. 31
NO. 32
NO. 33
NO. 34
NO. 35
NO. 36
NO. 37
NO. 38
NO. 39
NO. 40
NO. 41
NO. 42
NO. 43
NO. 44
NO. 45
NO. 46
NO. 47
NO. 48
NO. 49
NO. 50
NO. 51
NO. 52
NO. 53
NO. 54
NO. 55
NO. 56
NO. 57
NO. 58
NO. 59
NO. 60
NO. 61
NO. 62
NO. 63
NO. 64
NO. 65
NO. 66
NO. 67
NO. 68
NO. 69
NO. 70
NO. 71
NO. 72
NO. 73
NO. 74
NO. 75
NO. 76
NO. 77
NO. 78
NO. 79
NO. 80
NO. 81
NO. 82
NO. 83
NO. 84
NO. 85
NO. 86
NO. 87
NO. 88
NO. 89
NO. 90
NO. 91
NO. 92
NO. 93
NO. 94
NO. 95
NO. 96
NO. 97
NO. 98
NO. 99
NO. 100



HIGHWAY PLAN-PROFILE PLATE 1
THE M. L. & C. CO. ENGINEERS, OREGON

~ M. P. 0.00 - 0.46

ROAD NO. 188
T28-6 S. 114 D. SEPT 1937

1000000046