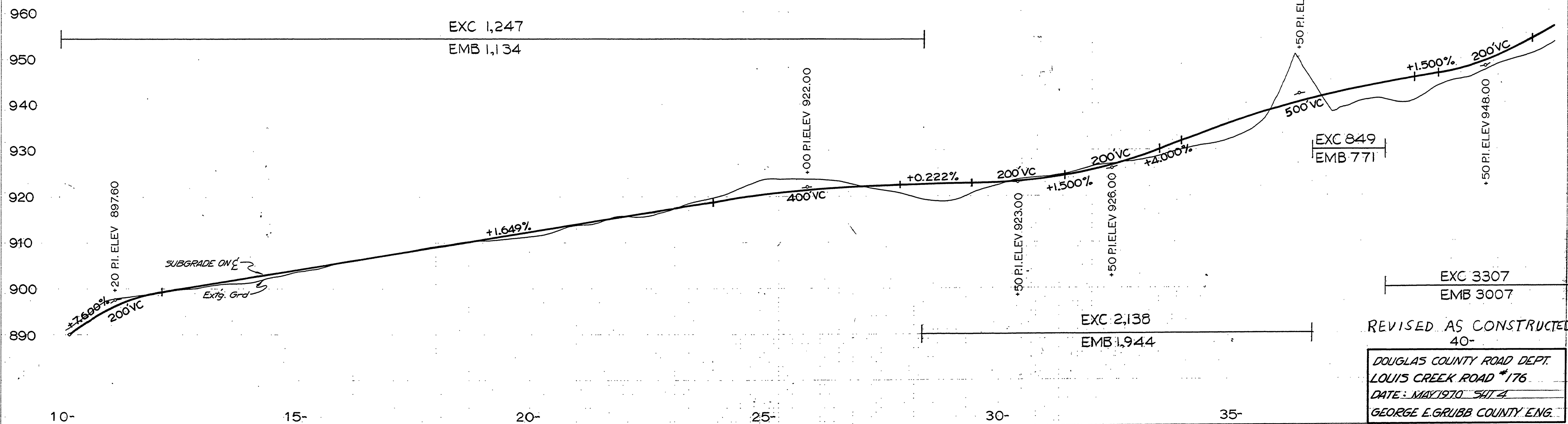
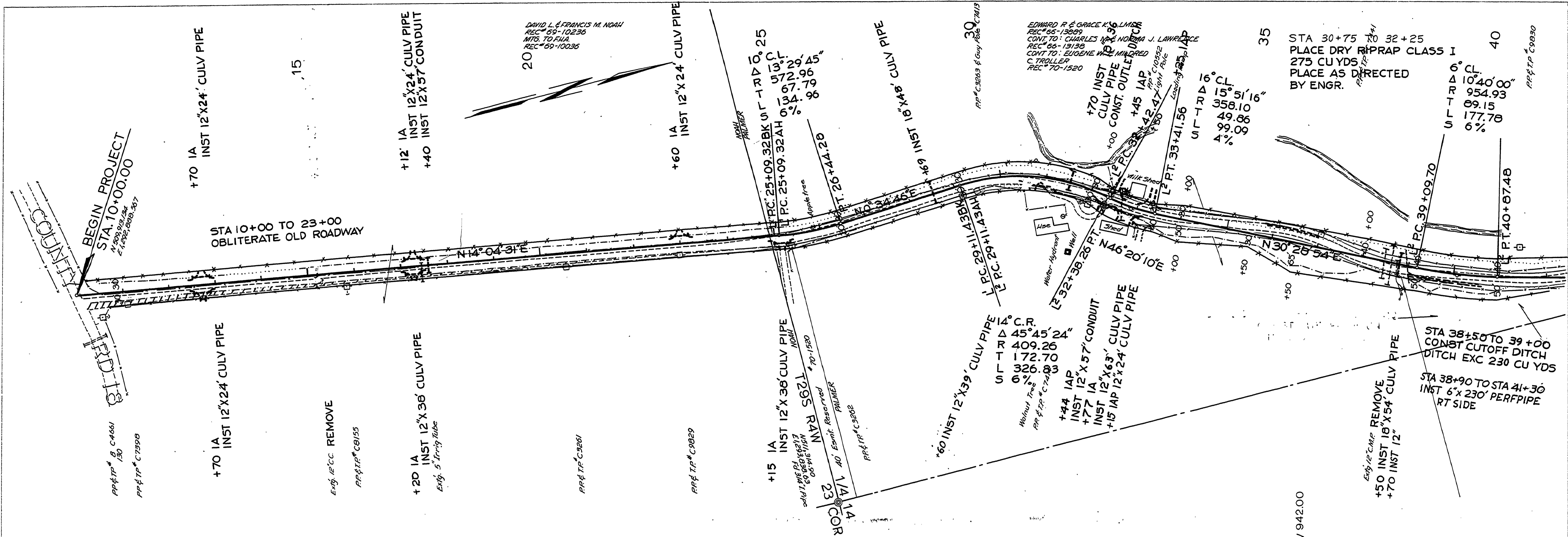


PLAN	DATE
SURVEYED BY	
PLOTTED BY	
NOTE BOOK NO.	
DATE	

PROFILE	DATE
SURVEYED BY	
PLOTTED BY	
NOTE BOOK NO.	
DATE	



REVISED AS CONSTRUCTED
 40-
 DOUGLAS COUNTY ROAD DEPT.
 LOUIS CREEK ROAD #176
 DATE: MAY 1970 SHIT 4
 GEORGE E. GRUBB COUNTY ENG.