

DOUGLAS COUNTY  
 OREGON  
 BURSİK-CALAHAN RD. C-174  
 SECTION 4 - T 27 S - R 7 W - W.M.  
 Sta. 42+61.6 to Sta. 111+60  
 June 1933.

Lot 60  
 EDEN ORCH.  
 New World Life

Lot 61  
 EDEN ORCH.  
 Clarence Olson  
 New World Life Ins.

Lot 65  
 EDEN ORCH.  
 W.D. Fritts  
 Rila H. Fritts  
 New World Life.

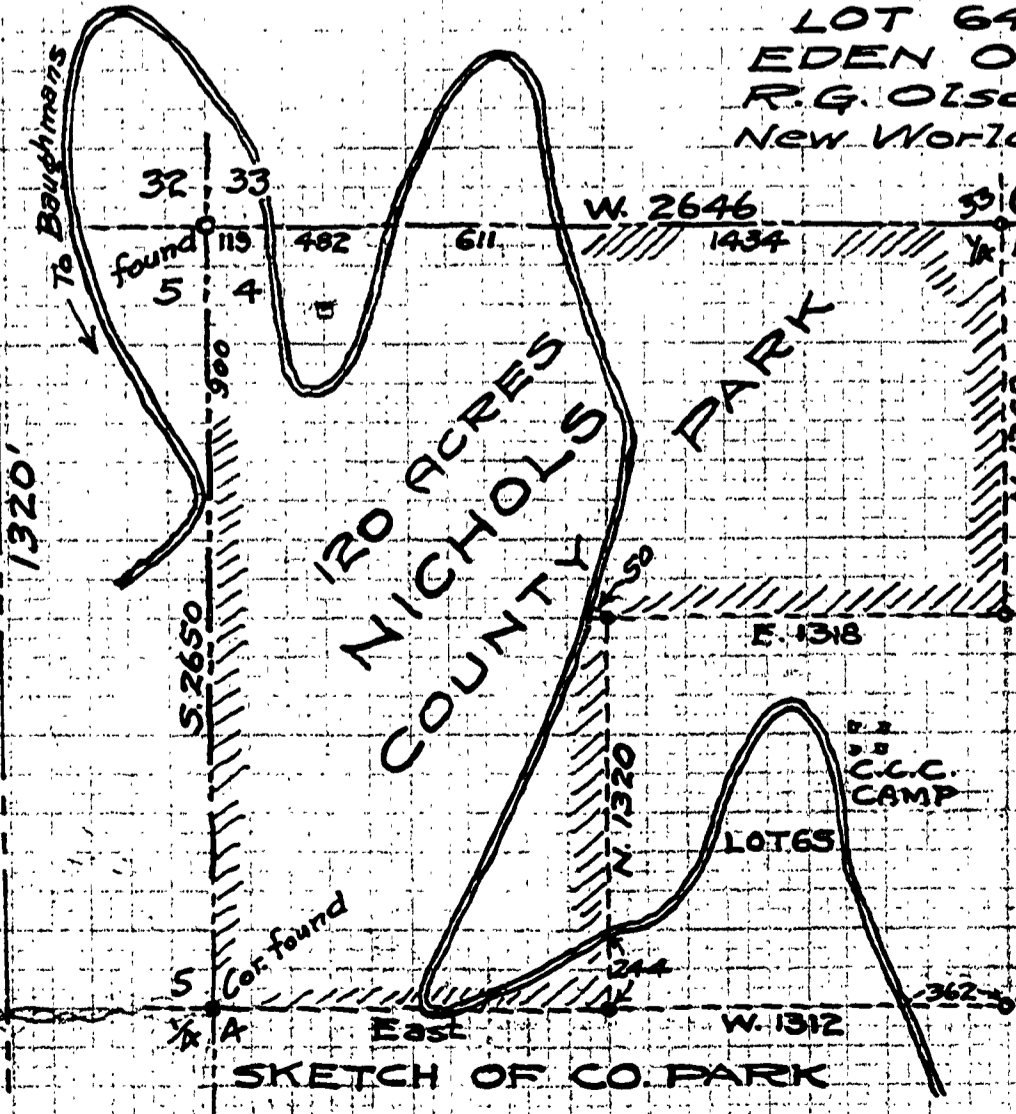
S.W. 1/4 - N.W. 1/4 SEC. 4  
 DOUGLAS COUNTY

Lot 64  
 EDEN ORCH.  
 R.G. Olson  
 New World Life

Lot 63  
 EDEN ORCH.  
 L.M. Merical  
 New World Life

Lot 62  
 EDEN ORCH.  
 L.M. Merical  
 New World Life

Lot 66  
 EDEN ORCH.  
 Latcher Ison  
 New World Life



SCALE 1" = 100'  
 LOCATED BY  
 JOE MORGAN, DERBY & FREAR  
 PLATTED BY F.C. Frear Co. Eng'rs

~ M.P. 1.00 - 0.50

T27-7 S. 4 JUNE 1933

C-174

ORIGINAL SURVEY  
 LISTED IN  
 PLAT BOOK

