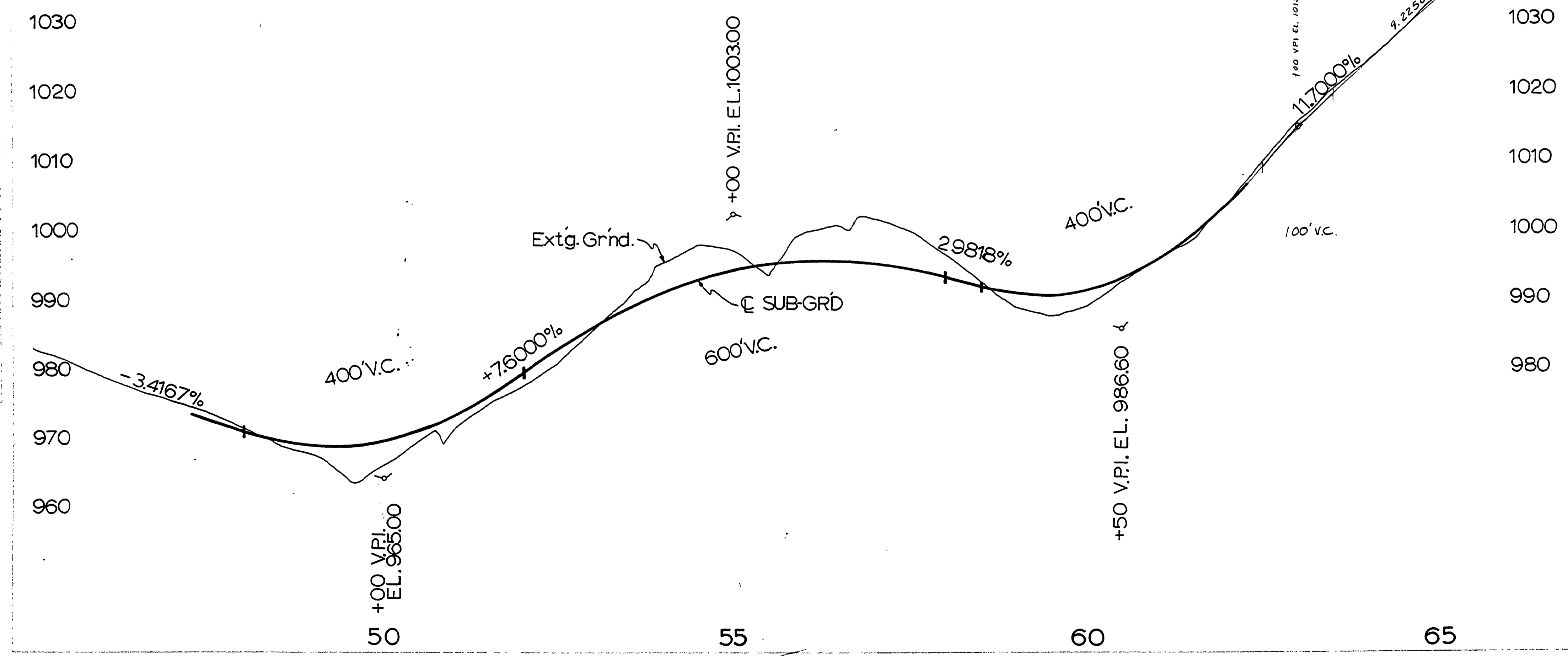
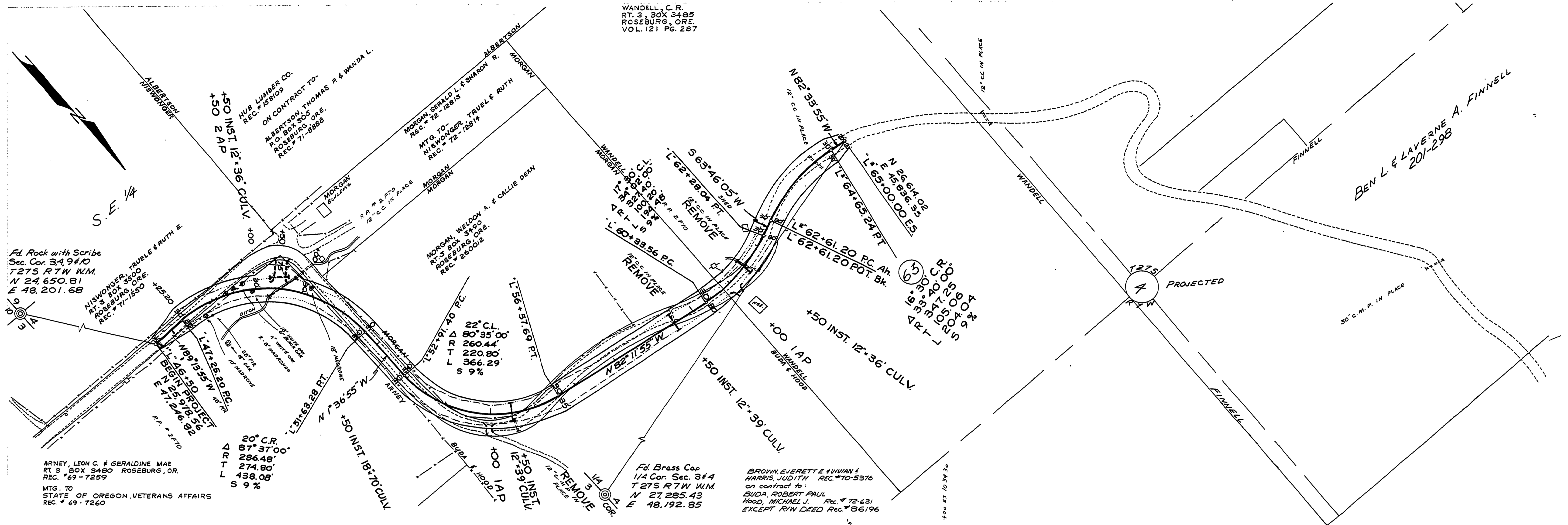


DATE	
BY	
REVISIONS	
1	AS SHOWN
2	AS SHOWN
3	AS SHOWN
4	AS SHOWN
5	AS SHOWN
6	AS SHOWN
7	AS SHOWN
8	AS SHOWN
9	AS SHOWN
10	AS SHOWN

DATE	
BY	
REVISIONS	
1	AS SHOWN
2	AS SHOWN
3	AS SHOWN
4	AS SHOWN
5	AS SHOWN
6	AS SHOWN
7	AS SHOWN
8	AS SHOWN
9	AS SHOWN
10	AS SHOWN



FILED  
RECEIVED  
JUL 6 1975  
COUNTY SURVEYOR  
DOUGLAS COUNTY, ORE.

NOT REVISED  
AS CONSTRUCTED  
DOUGLAS COUNTY ROAD DEPT.  
CALLAHAN RD. 174  
1972 SHT. 3  
GEORGE E. GRUBB COUNTY ENGR.

RD174003