

WEYERHAEUSER CO.

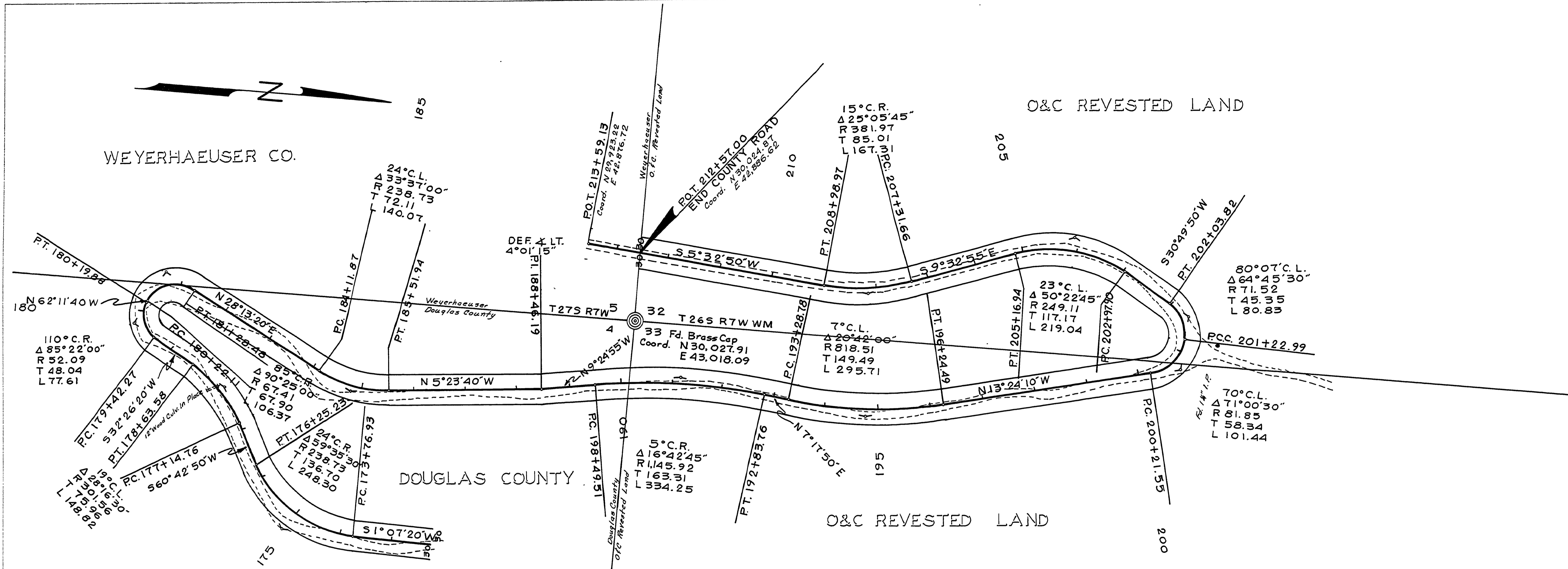
O&C REVESTED LAND

DOUGLAS COUNTY

O&C REVESTED LAND

PLAN	SURVEYED	DATE
	PLOTTED	
	ALIGNED	
	CHECKED	
	BY	
	NO.	

PROFILE	SURVEYED	DATE
	PLOTTED	
	GRADES CHECKED	
	BY	
	NO.	



FILED  
RECEIVED  
NOV 1970  
COUNTY CLERK  
DOUGLAS COUNTY

DOUGLAS COUNTY ROAD DEPT.  
CALLAHAN ROAD # 174  
DATE: NOV. 1970 SHEET 3  
GEORGE E. GRUBB COUNTY ENG.

03750302