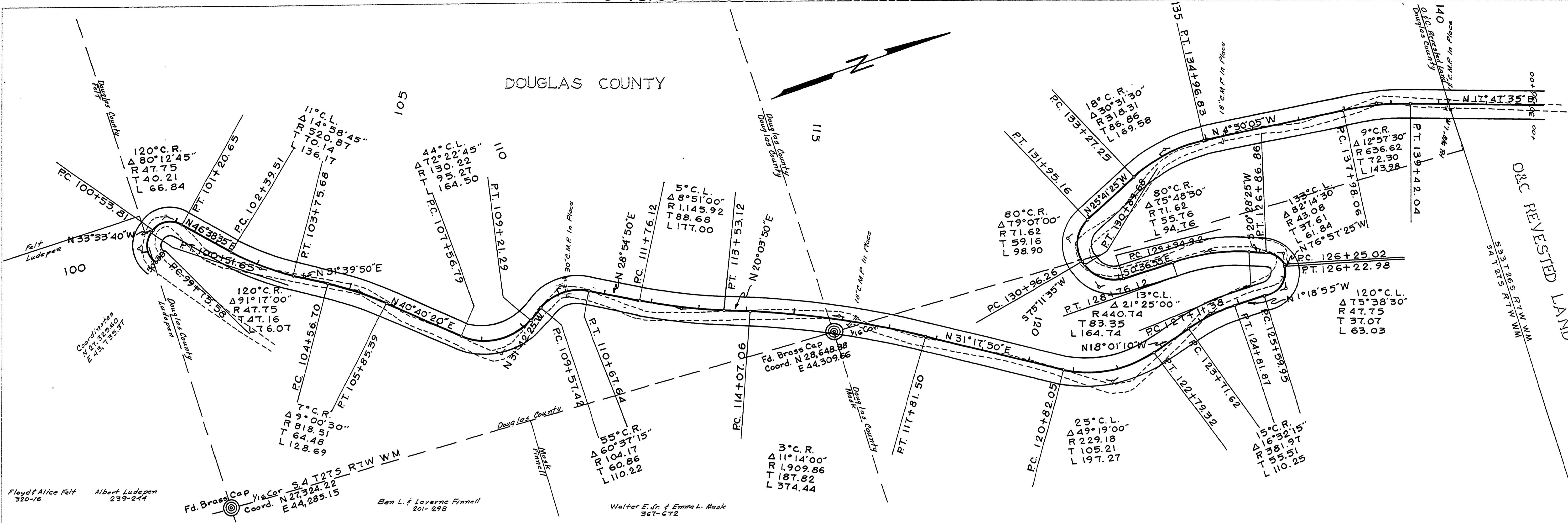


DOUGLAS COUNTY

DATE	
BY	
PLAN	REVISIONS
NOTE BOOK	ALIGNED CHECKED
NO.	NO.

DATE	
BY	
PROFILE	REVISIONS
NOTE BOOK	GRADES CHECKED
NO.	NO.



DOUGLAS COUNTY ROAD DEPT.
 CALLAHAN ROAD # 174
 DATE: NOV. 1970 SHEET # 1
 GEORGE E. GRUBB COUNTY ENG.

01620234