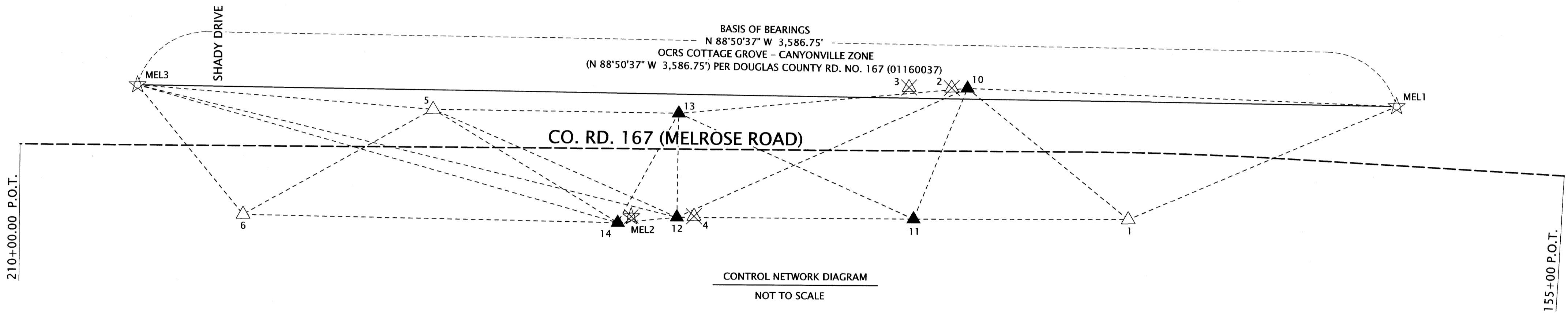


NE 1/4 SECTION 9, T. 27 S., R.6 W., W.M.
 NW 1/4 SECTION 9, T. 27 S., R.6 W., W.M.
 NW 1/4 SECTION 10, T. 27 S., R.6 W., W.M.

FILED
 Date: 6-4-2025 By: DS
 This survey consist of:
 Map: 4 pages
 Narrative: _____
 Corner Rpt: _____
 DOUGLAS COUNTY
 SURVEYOR



CONTROL POINT TABLE

+ = CONTROL POINT DESTROYED BY CONSTRUCTION

PT. NO.	OCRS NORTHING	OCRS EASTING	DATE	DESCRIPTION
1	148762.29	144088.31	12/10/2020	FOUND 5/8" X 30" IRON ROD WITH 1-1/2" ALUMINUM CAP "ODOT CONTROL 1"
2	148805.90	143604.37	12/10/2020	FOUND 5/8" X 30" IRON ROD WITH 1-1/2" ALUMINUM CAP "ODOT CONTROL 2" +
3	148808.29	143461.76	12/10/2020	FOUND 5/8" X 30" IRON ROD WITH 1-1/2" ALUMINUM CAP "ODOT CONTROL 3" +
4	148777.06	142833.79	12/10/2020	FOUND 5/8" X 30" IRON ROD WITH 1-1/2" ALUMINUM CAP "ODOT CONTROL 4" +
5	148829.29	142100.79	12/10/2020	FOUND 5/8" X 30" IRON ROD WITH 1-1/2" ALUMINUM CAP "ODOT CONTROL 5"
6	148784.89	141567.48	12/10/2020	FOUND 5/8" X 30" IRON ROD WITH 1-1/2" ALUMINUM CAP "ODOT CONTROL 6"
10	148806.06	143608.50	3/24/2025	SET 5/8" X 30" REBAR W/ 2" ALUMINUM CAP "ODOT CONTROL POINT 10"
11	148766.20	143476.90	3/24/2025	SET 5/8" X 30" REBAR W/ 2" ALUMINUM CAP "ODOT CONTROL POINT 11"
12	148773.42	142802.85	3/24/2025	SET 5/8" X 30" REBAR W/ 2" ALUMINUM CAP "ODOT CONTROL POINT 12"
13	148816.39	142800.22	3/24/2025	SET 5/8" X 30" REBAR W/ 2" ALUMINUM CAP "ODOT CONTROL POINT 13"
14	148763.53	142645.36	3/24/2025	SET 5/8" X 30" REBAR W/ 2" ALUMINUM CAP "ODOT CONTROL POINT 14"
MEL1	148770.77	144850.31	12/9/2019	FOUND 5/8" X 30" IRON ROD WITH 1-1/2" ALUMINUM CAP "ODOT CONTROL MEL1"
MEL2	148772.58	142658.04	12/9/2019	FOUND 5/8" X 30" IRON ROD WITH 1-1/2" ALUMINUM CAP "ODOT CONTROL MEL2" +
MEL3	148843.16	141264.29	12/9/2019	SET 5/8" X 30" IRON ROD WITH 1-1/2" ALUMINUM CAP "ODOT CONTROL MEL3"



POINT AND LINE LEGEND	
	SET NETWORK POINT
	FOUND NETWORK POINT, USED IN NETWORK
	FOUND GPS POINT, USED IN NETWORK
	DESTROYED NETWORK POINT
	DESTROYED GPS POINT
	LINE OF OBSERVATION (TERRESTRIAL OBSERVATION)
	APPROXIMATE HIGHWAY/ ROAD CENTER LINE
	BASIS OF BEARING LINE

CONTROL NARRATIVE

BASIS OF BEARINGS AND COORDINATES FOR THIS SURVEY IS THE OREGON COORDINATE REFERENCE SYSTEM (OCRS) COTTAGE GROVE-CANYONVILLE ZONE, NAD 83(2011) EPOCH 2010.00. THE OCRS COORDINATES ARE EQUAL TO OR CLOSE TO TRUE GROUND DISTANCES. THE UNITS OF THIS SURVEY ARE INTERNATIONAL FEET. THE ORIGINAL SURVEY THAT ESTABLISHED CONTROL FOR THE MELROSE RD: CONN FORD BRIDGE REPLACEMENT PROJECT HELD THE CONTROL POINTS AS ESTABLISHED ON THE SURVEY FILED AS DOUGLAS COUNTY RD. NO. 167 (01280024, 01160037, 01260103, 01030078, 00780024). THE ORIGINAL PROCEDURE IN 2021 INVOLVED HOLDING CONTROL POINTS "MEL1", "MEL2" AND "MEL3" FROM GNSS STATIC SURVEY FOR THE PROJECT AND THEN PERFORMING A TERRESTRIAL NETWORK BASED UPON THE FIXED GNSS VALUES. A POST-CONSTRUCTION INVENTORY OF THE CONTROL NETWORK WAS PERFORMED AS A PART OF THIS SURVEY AND FOUND MANY OF THE ORIGINAL CONTROL POINTS DESTROYED BY CONSTRUCTION ACTIVITIES. A SUPPLEMENTARY SURVEY WAS THEN PERFORMED TO RE-ESTABLISH NEW CONTROL POINTS AND AUGMENT THE EXISTING CONTROL NETWORK FOR THE PROJECT. A NEW TERRESTRIAL NETWORK WAS THEN PERFORMED HOLDING CONTROL POINTS "MEL1", "MEL3", 1, 5 AND 6. A NEW TERRESTRIAL NETWORK WAS THEN PROCESSED AND ADJUSTED WITH A 2D LEAST SQUARES ADJUSTMENT UTILIZING LEICA INFINITY. THE HORIZONTAL LEAST SQUARES ADJUSTMENT PASSED THE ACCURACY STANDARDS FOR A 2D NETWORK PER ODOT'S SURVEY POLICY AND PROCEDURE MANUAL.

CONTROL POINTS FOR THIS SURVEY WERE NOT SET ON AND DO NOT REPRESENT PROPERTY OR RIGHT OF WAY LINES AND ARE INTENDED FOR THE USE BY ODOT IN SUPPORT OF THIS AND FUTURE PROJECTS. IT IS NOT THE INTENT OF ODOT TO PERPETUATE THESE CONTROL POINTS AS MONUMENTS.

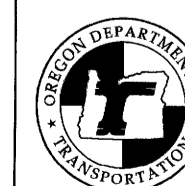
REGISTERED
 PROFESSIONAL
 LAND SURVEYOR

Andrew David Ausland
 OREGON
 JULY 15, 2003
 ANDREW DAVID AUSLAND
 56136

EXPIRES: 12/31/2025

OREGON DEPARTMENT OF TRANSPORTATION

RIGHT-OF-WAY BOUNDARY MONUMENTATION MAP
 MELROSE RD.: CONN FORD BRIDGE
 COUNTY RD. NO. 167 (MELROSE RD.)
 DOUGLAS COUNTY



ODOT REGION 3 TECH CENTER
 100 ANTELOPE ROAD
 WHITE CITY, OREGON 97503 KEY NO. 21591

MAY, 2025
 NO SCALE
 SHEET 2 OF 4

0118 0081