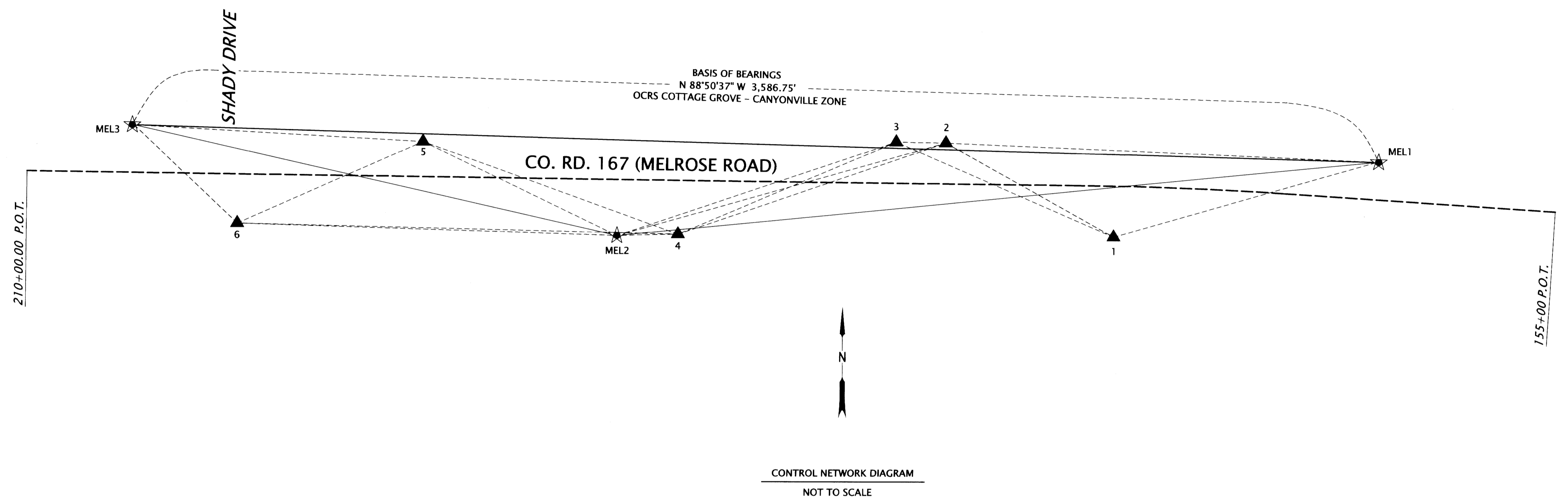


NE 1/4 SECTION 9, T. 27 S., R. 6 W., W.M.
 NW 1/4 SECTION 9, T. 27 S., R. 6 W., W.M.
 NW 1/4 SECTION 10, T. 27 S., R. 6 W., W.M.

FILED
 Date: 9-16-2021 By: JC
 This survey consist of:
 Map: 5963
 Narrative:
 Corner Rpt:
 DOUGLAS COUNTY
 SURVEYOR



CONTROL NARRATIVE

PROJECT - MELROSE RD.: CONN FORD BRIDGE
 LOCATION - DOUGLAS COUNTY, OREGON
 KEY NUMBER - 21591
 HORIZONTAL - OREGON COORDINATE REFERENCE SYSTEM (OCR):
 COTTAGE GROVE - CANYONVILLE ZONE,
 NAD83(2011) EPOCH 2010 (INTERNATIONAL FEET)

HORIZONTAL CONTROL

A STATIC GPS NETWORK USING REDUNDANT 2 HOUR DOUBLE-OCCUPATIONS WAS PERFORMED TO DERIVE COORDINATES ON POINTS MEL1, MEL2 AND MEL3. STATIONS 'P820', 'PSPT' AND 'YONC' OF THE OREGON REAL TIME GEODETIC NETWORK (ORGN) WERE HELD FIXED TO DERIVE HORIZONTAL POSITION ON MEL1, MEL2 AND MEL3. A SUBSEQUENT CONVENTIONAL NETWORK WAS THEN PERFORMED THROUGH NETWORK POINTS 1 THROUGH 6, HOLDING THE FINAL ADJUSTED GRID COORDINATE VALUES FOR MEL1, MEL2 AND MEL3 FIXED. BOTH NETWORKS WERE PROCESSED AND ADJUSTED UTILIZING A 3D LEAST SQUARES ADJUSTMENT UTILIZING LEICA INFINITY.

CONTROL POINTS FOR THIS SURVEY WERE NOT SET ON AND DO NOT REPRESENT PROPERTY OR RIGHT OF WAY LINES AND ARE INTENDED FOR THE USE BY ODOT IN SUPPORT OF THIS AND FUTURE PROJECTS. IT IS NOT THE INTENT OF ODOT TO PERPETUATE THESE CONTROL POINTS AS MONUMENTS.

CONTROL POINT TABLE

PT. NO.	OCR NORTHING	OCR EASTING	DATE	DESCRIPTION
MEL1	148770.77	144850.31	12/9/19	SET 5/8" X 30" IR WITH 1-1/2" ALUMINUM CAP STAMPED "ODOT CONTROL MEL1"
MEL2	148772.58	142658.04	12/9/19	SET 5/8" X 30" IR WITH 1-1/2" ALUMINUM CAP STAMPED "ODOT CONTROL MEL2"
MEL3	148843.16	141264.29	12/9/19	SET 5/8" X 30" IR WITH 1-1/2" ALUMINUM CAP STAMPED "ODOT CONTROL MEL3"
1	148762.29	144088.31	12/10/20	SET 5/8" X 30" IR WITH 1-1/2" ALUMINUM CAP STAMPED "ODOT CONTROL 1"
2	148805.90	143604.37	12/10/20	SET 5/8" X 30" IR WITH 1-1/2" ALUMINUM CAP STAMPED "ODOT CONTROL 2"
3	148808.29	143461.76	12/10/20	SET 5/8" X 30" IR WITH 1-1/2" ALUMINUM CAP STAMPED "ODOT CONTROL 3"
4	148777.06	142833.79	12/10/20	SET 5/8" X 30" IR WITH 1-1/2" ALUMINUM CAP STAMPED "ODOT CONTROL 4"
5	148829.29	142100.79	12/10/20	SET 5/8" X 30" IR WITH 1-1/2" ALUMINUM CAP STAMPED "ODOT CONTROL 5"
6	148784.89	141567.48	12/10/20	SET 5/8" X 30" IR WITH 1-1/2" ALUMINUM CAP STAMPED "ODOT CONTROL 6"

POINT AND LINE LEGEND

- SET GPS POINT
- SET NETWORK POINT
- LINES OF OBSERVATION (TERRESTRIAL OBSERVATION)
- LINES OF OBSERVATION (STATIC GNSS OBSERVATION)
- APPROXIMATE HIGHWAY/ ROAD CENTER LINE

REGISTERED
 PROFESSIONAL
 LAND SURVEYOR

Andrew D. Ausland
 OREGON
 JULY 15, 2003
 ANDREW DAVID AUSLAND
 56136
 EXPIRES: 12/31/2021

THIS SURVEY WAS PREPARED WITH A HEWLETT - PACKARD (HP) DESIGNJET T770 USING HP NO. C9370A INKJET INK ON MILANO NO. JPC-4M2 POLYESTER FILM.

OREGON DEPARTMENT OF TRANSPORTATION
 HORIZONTAL CONTROL, RECOVERY AND RETRACEMENT SURVEY
 MELROSE RD.: CONN FORD BRIDGE
 COUNTY RD. NO. 167 (MELROSE RD.)
 DOUGLAS COUNTY

ODOT REGION 3 TECH CENTER
 3500 NW STEWART PKWY.
 ROSEBURG, OR 97470 KEY NO. 21591

SEPTEMBER 13, 2021
 NO SCALE
 SHEET 2 OF 5

01160037