

DOUGLAS COUNTY OREGON

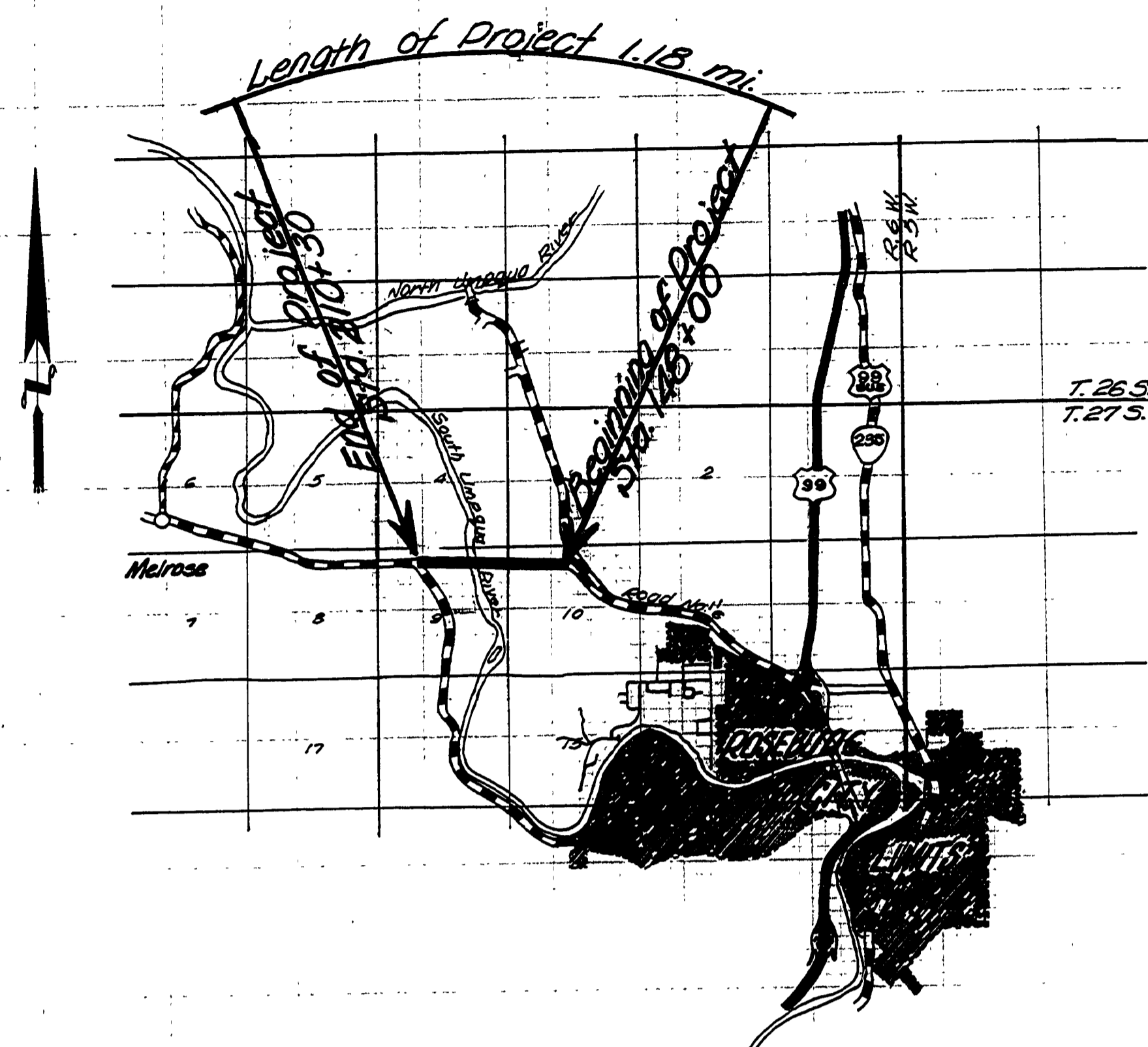
PLANS FOR PROPOSED PROJECT GRADING

CONN FORD RD.

COUNTY ROAD NO. 167

F.A.S. NO. 235

APRIL 1963



VICINITY MAP

Adopted by Resolution of the
County Court this 8 day of
Feb 1963

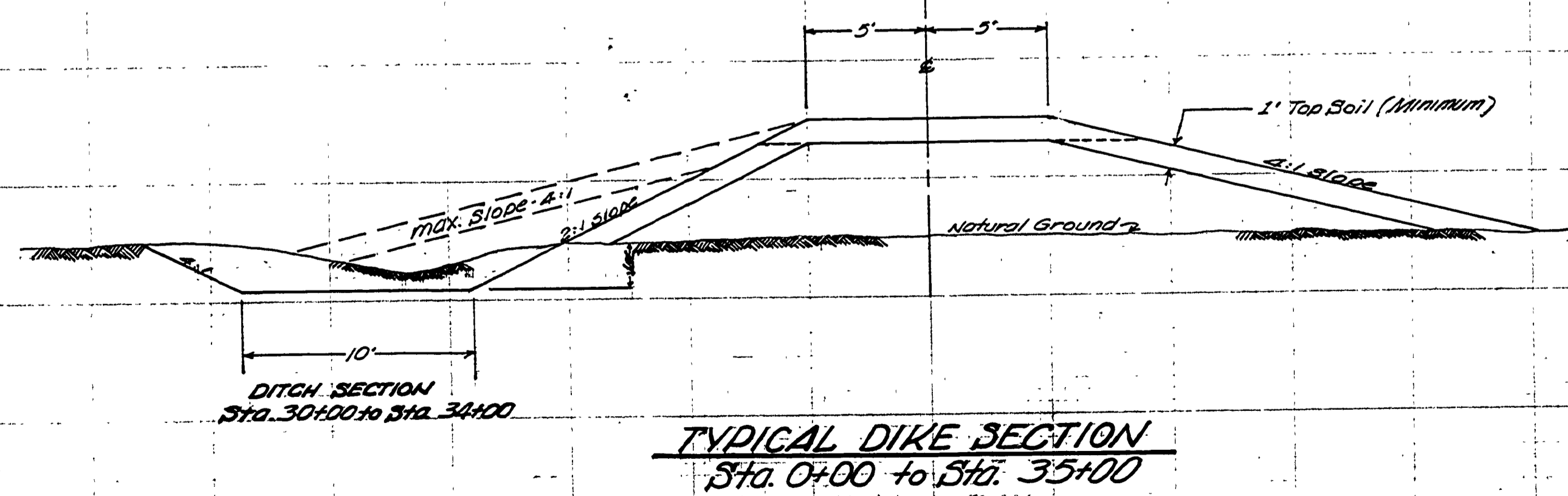
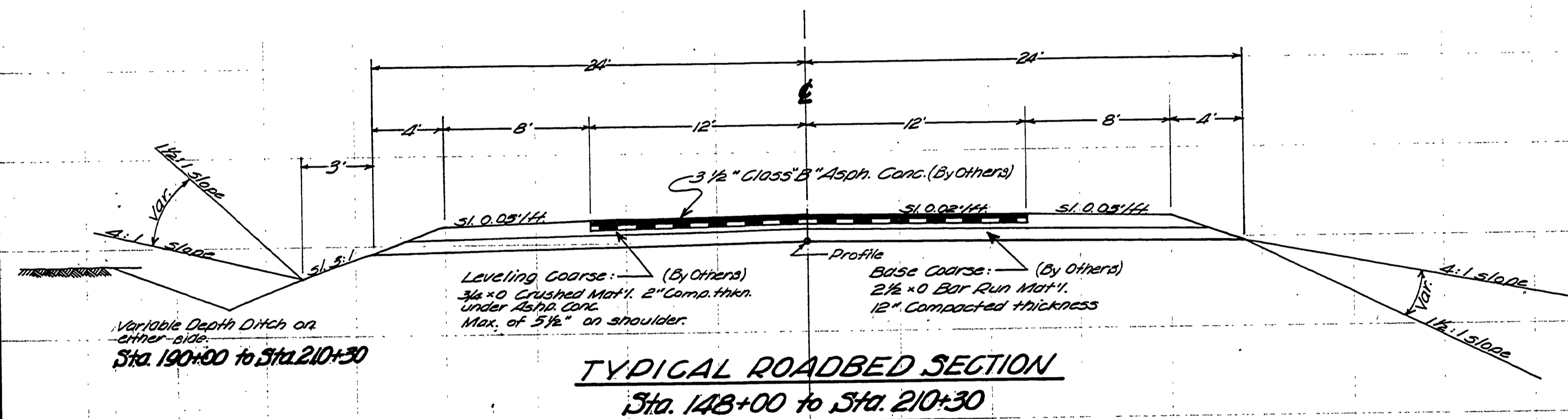
V. I. Jackson
JUDGE

E. R. Metcalf
COMMISSIONER

Ray E. ...
COMMISSIONER



Approved *O. H. Mumford* Date 4/22/63
COUNTY ENGINEER



FILED
RECEIVED
JUN 26 1964
COUNTY SURVEYOR
DOUGLAS COUNTY, ORE.

Sheet 1 of 4

6. Rd # 167 4/63 1/1 of 4 (17)

00050120