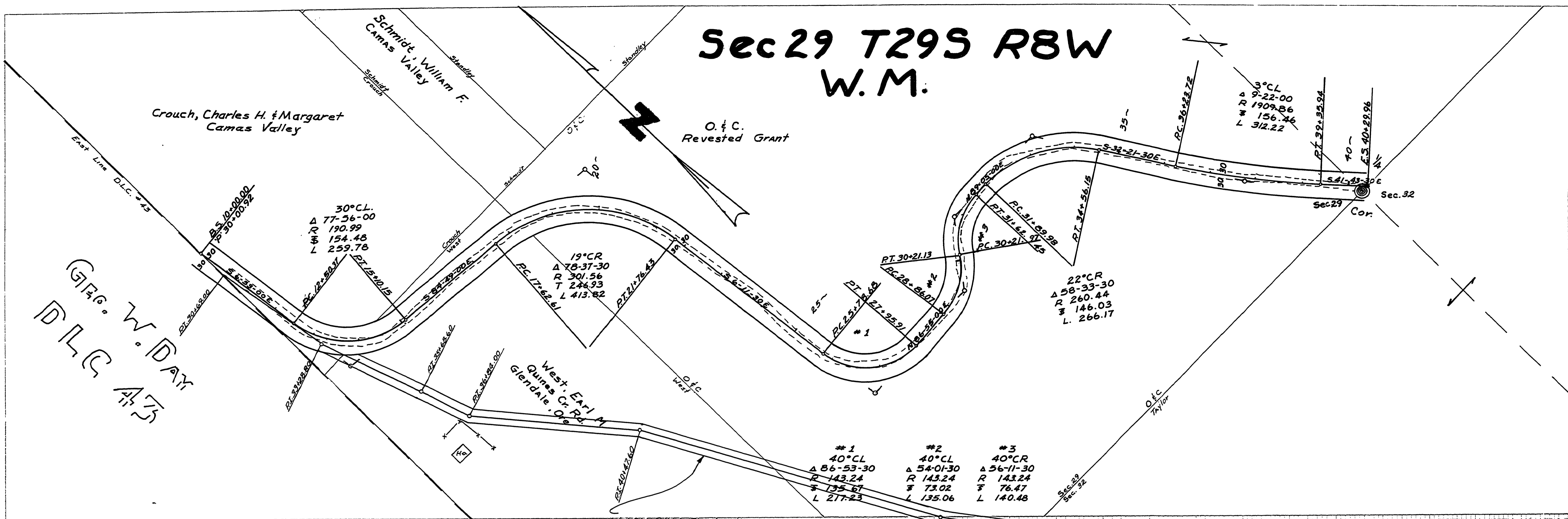


Sec 29 T29S R8W W.M.

DATE	
BY	
FINAL SURVEY	
SURVEYED	
PLANNED	
TEMPLATE	
AREAS CHECKED	
NO.	

DATE	
BY	
ORIGINAL SURVEY	
SURVEYED	
PLANNED	
TEMPLATE	
AREAS CHECKED	
NO.	

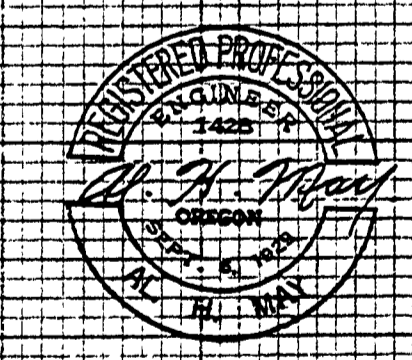


Note: Old R/W in this location to be vacated

Adopted by Resolution of
the County Court this
30th day of Oct. 1963

V. S. Swanson
County Engineer
G. P. Anderson
Commissioner
R. J. ...
Commissioner

Approved *A. H. May* Nov 1964
County Engineer



FILED
RECEIVED
AUG 3 1965
COUNTY SURVEYOR
DOUGLAS COUNTY, ORE.

Douglas County Road Dept.
BURMA ROAD Co. Rd. No. 1315
Date April 1963 Sheet 1 of 1
A.H. MAY County Engineer

01280185