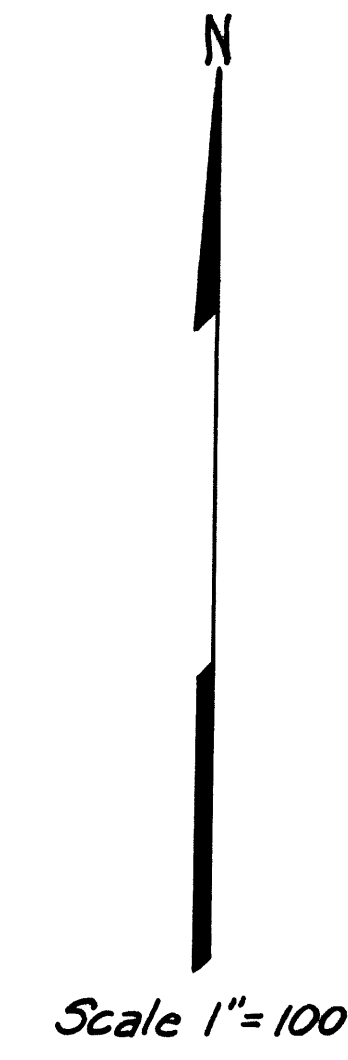
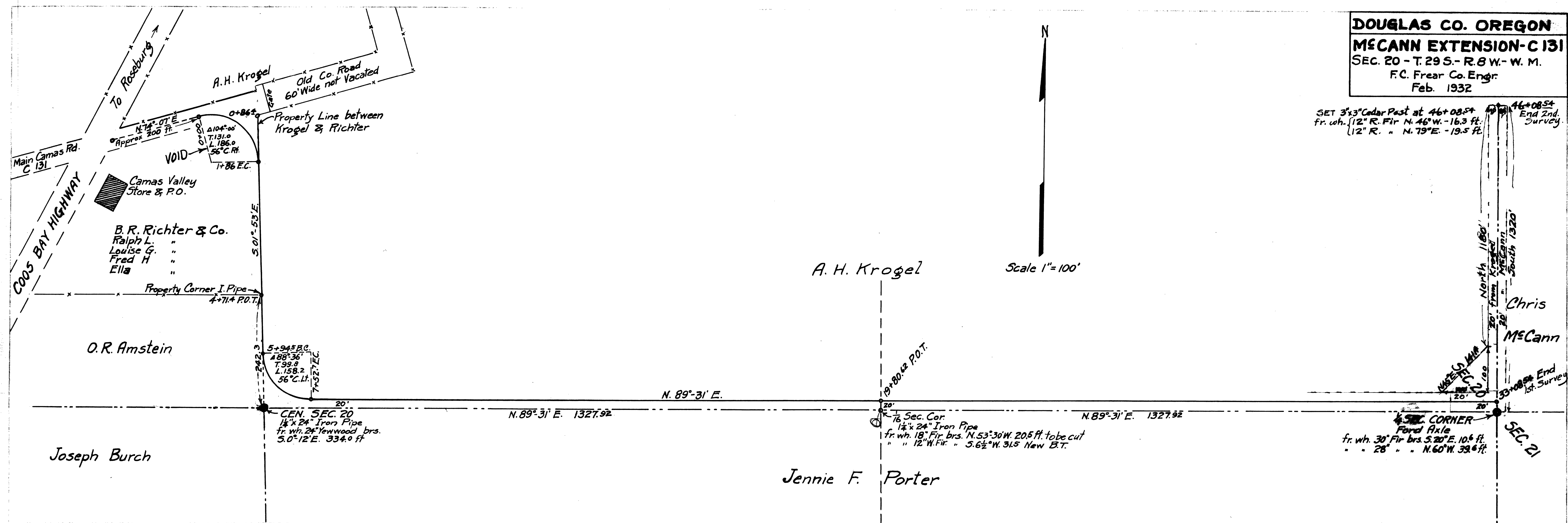


DOUGLAS CO. OREGON
MCCANN EXTENSION-C 131
 SEC. 20 - T. 29 S. - R. 8 W. - W. M.
 F.C. Frear Co. Engr.
 Feb. 1932

SET 3"x3" Cedar Post at 46+08.54
 fr. wh. 12" R. Fir N. 46° W. - 16.3 ft.
 12" R. " N. 79° E. - 19.5 ft.



0 1 2 3 4 5 6 7 8 9 10 11 12 13 14 15 16 17 18 19 20 21 22 23 24 25 26 27 28 29 30 31 32 33

ump 0.40 to 1.27

T 29-B S. 20 FEB 1932

C-131E