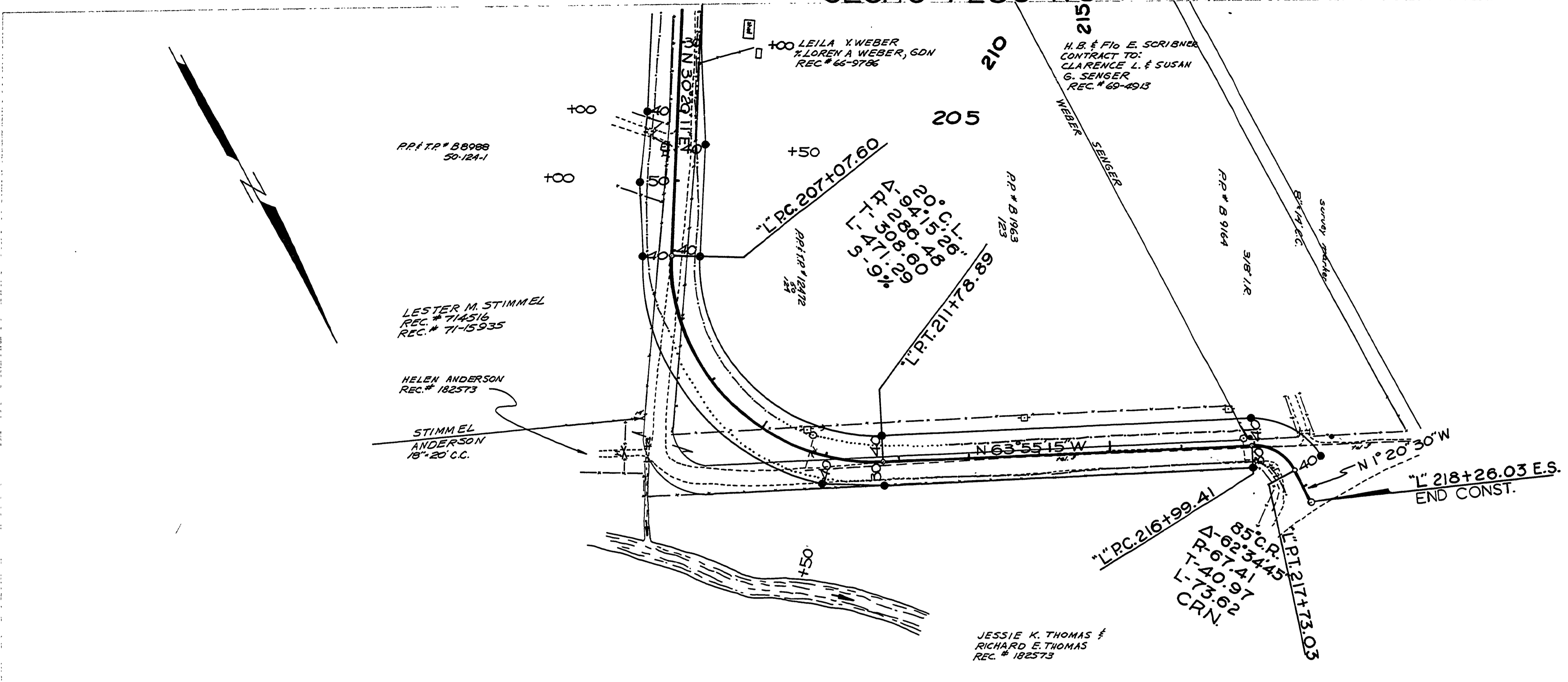


SEC. 19 T28S R5W W.M.

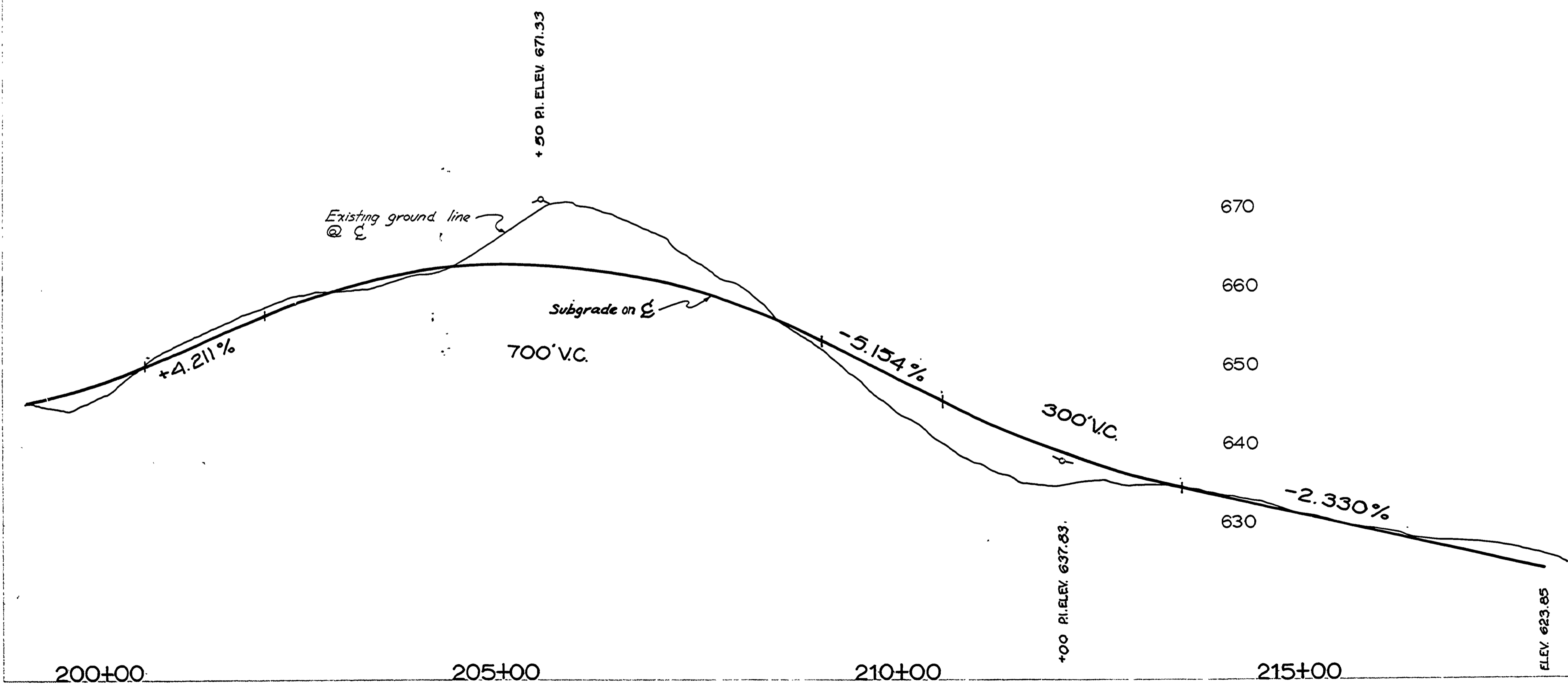
FILED
RECEIVED
AUG 1 1979
COUNTY SURVEYOR
DOUGLAS COUNTY, ORE

PLAN
DATE PLOTTED: 10-30-78
BY: G. E. GRUBB
CHECKED: G. E. GRUBB
INSTRUMENTS: TRANSIT, LEVEL, STAFF, TAPE

PROFILE
DATE PLOTTED: 10-30-78
BY: G. E. GRUBB
CHECKED: G. E. GRUBB
INSTRUMENTS: TRANSIT, LEVEL, STAFF, TAPE



- - INDICATES PIN NOT SET
- - INDICATES PIN FOUND
- - INDICATES SET PIN 3/8" X 30" IR



AS BUILT 10-30-78 T.V.
DOUGLAS COUNTY
PUBLIC WORKS DEPARTMENT
GLENGARY LOOP ROAD 121
1975 SHT. 8
GEORGE E. GRUBB, DIRECTOR

02050230