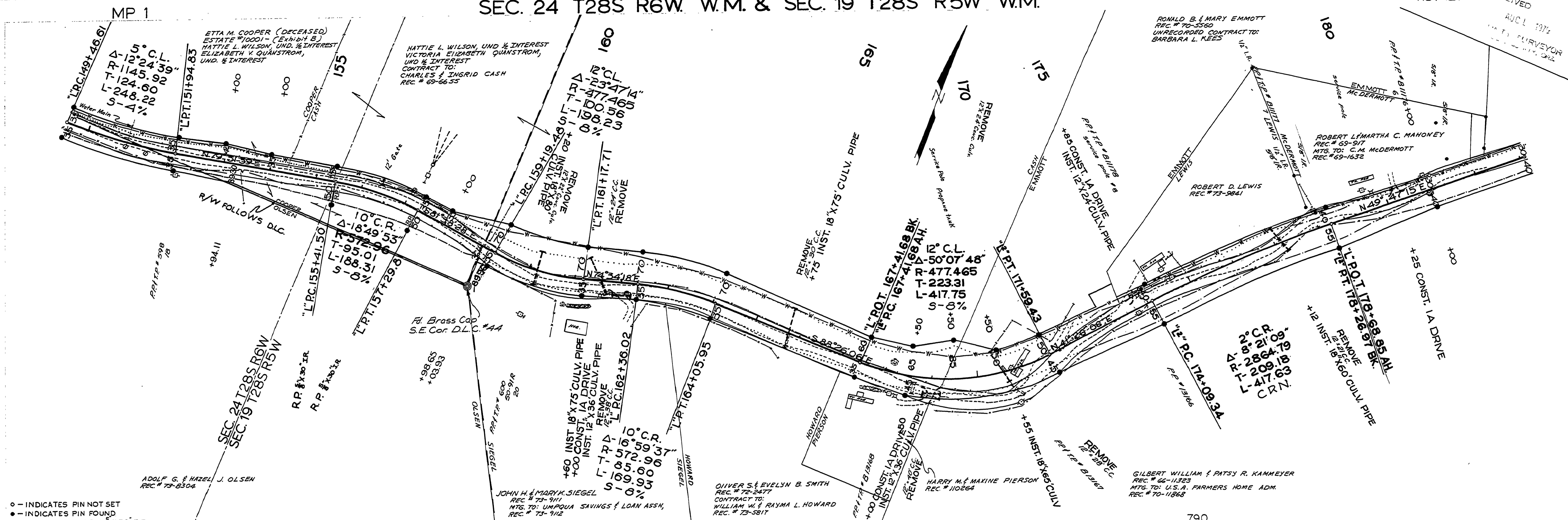
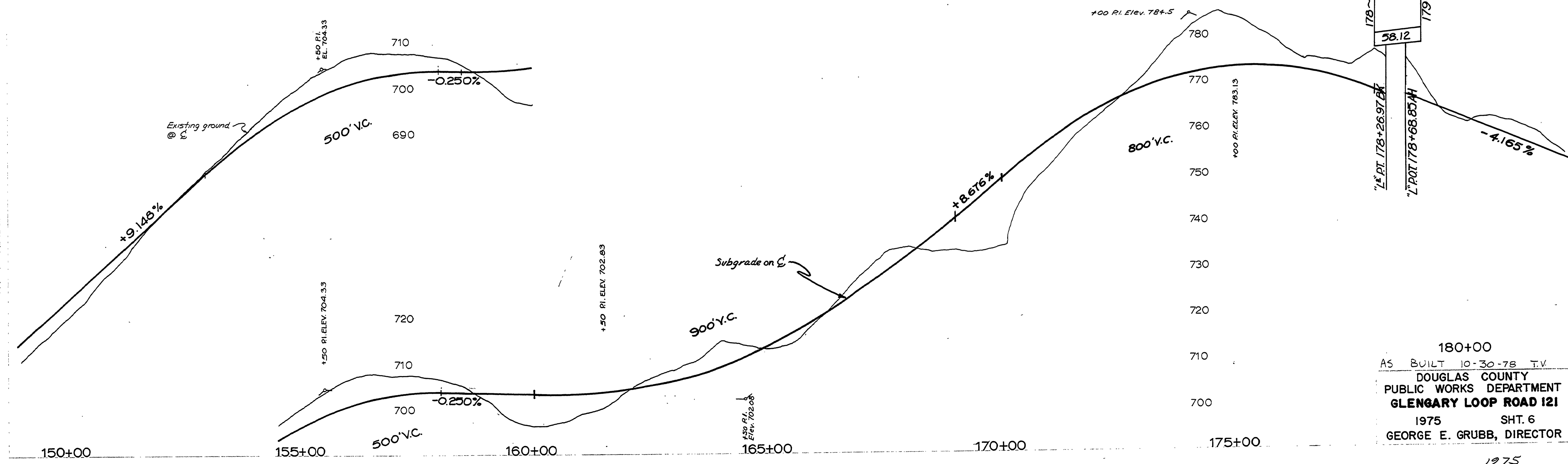


SEC. 24 T28S R6W. W.M. & SEC. 19 T28S R5W W.M.

RD. 121
FILED
RECEIVED
AUG 1 1975
COUNTY SURVEYOR
DAVID W. HAYES



- - INDICATES PIN NOT SET
- - INDICATES PIN FOUND
- - INDICATES SET PIN 3/8 X 30" IR



180+00
AS BUILT 10-30-78 T.V.
DOUGLAS COUNTY
PUBLIC WORKS DEPARTMENT
GLENARY LOOP ROAD 121
1975 SHT. 6
GEORGE E. GRUBB, DIRECTOR

01110158

1975
C. Rd. #121 SHT. 6 OF 8 (101)