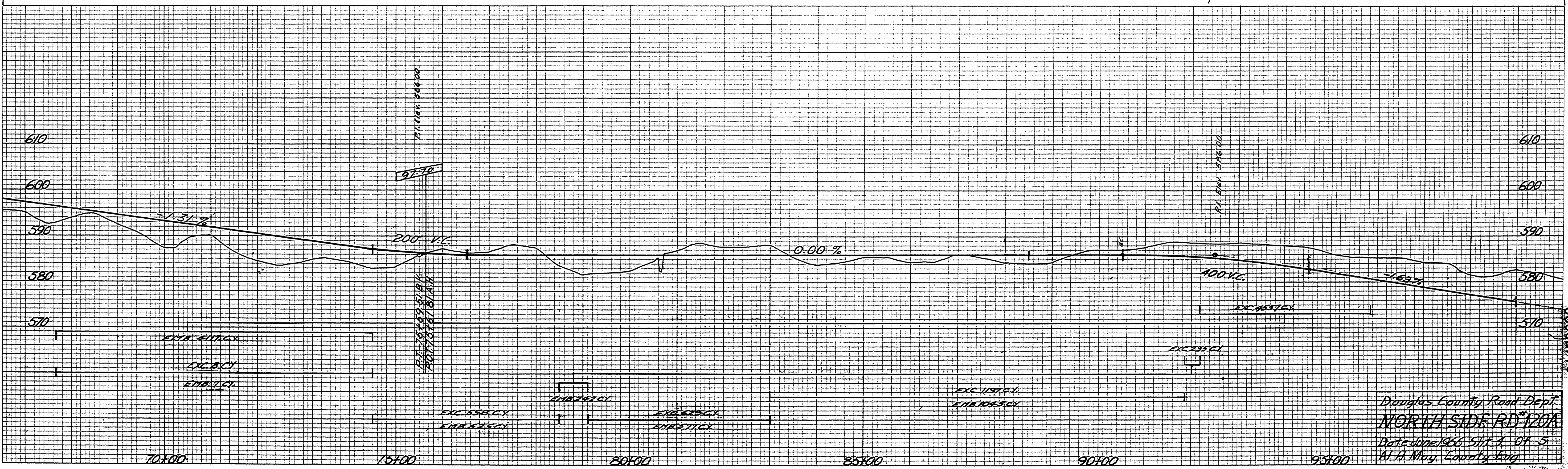
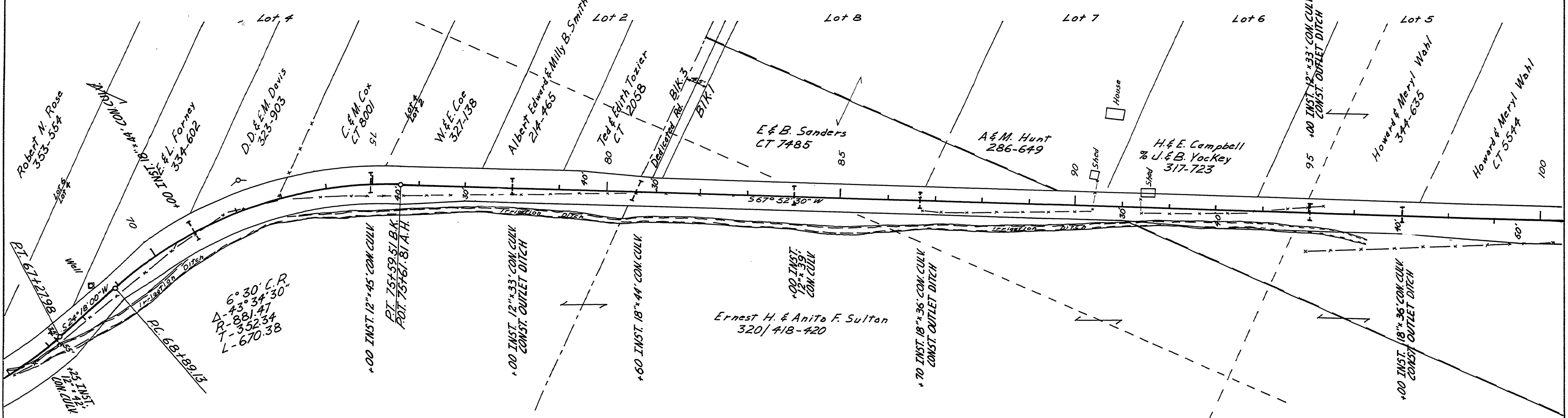


SEC. 11. T. 25 S. R. 5 W.

Block 3 Plat F

Block 1 Plat D



DATE	BY
FINAL SURVEY	PLANNED
REVISIONS	REVISIONS
TEMPLATE	TEMPLATE
AREAS	AREAS
CHECKED	CHECKED
NO. 100	NO. 100

DATE	BY
ORIGINAL SURVEY	PLANNED
REVISIONS	REVISIONS
TEMPLATE	TEMPLATE
AREAS	AREAS
CHECKED	CHECKED
NO. 100	NO. 100

Douglas County Road Dept.
NORTH SIDE RD 120A
Date done 1966 SH. 1 OF 5
A.H. Mag. County Eng.

M.P. 1.47-0.90

JUNE, 1966
G.R. # 120-A SH. 4 OF 5

01470090