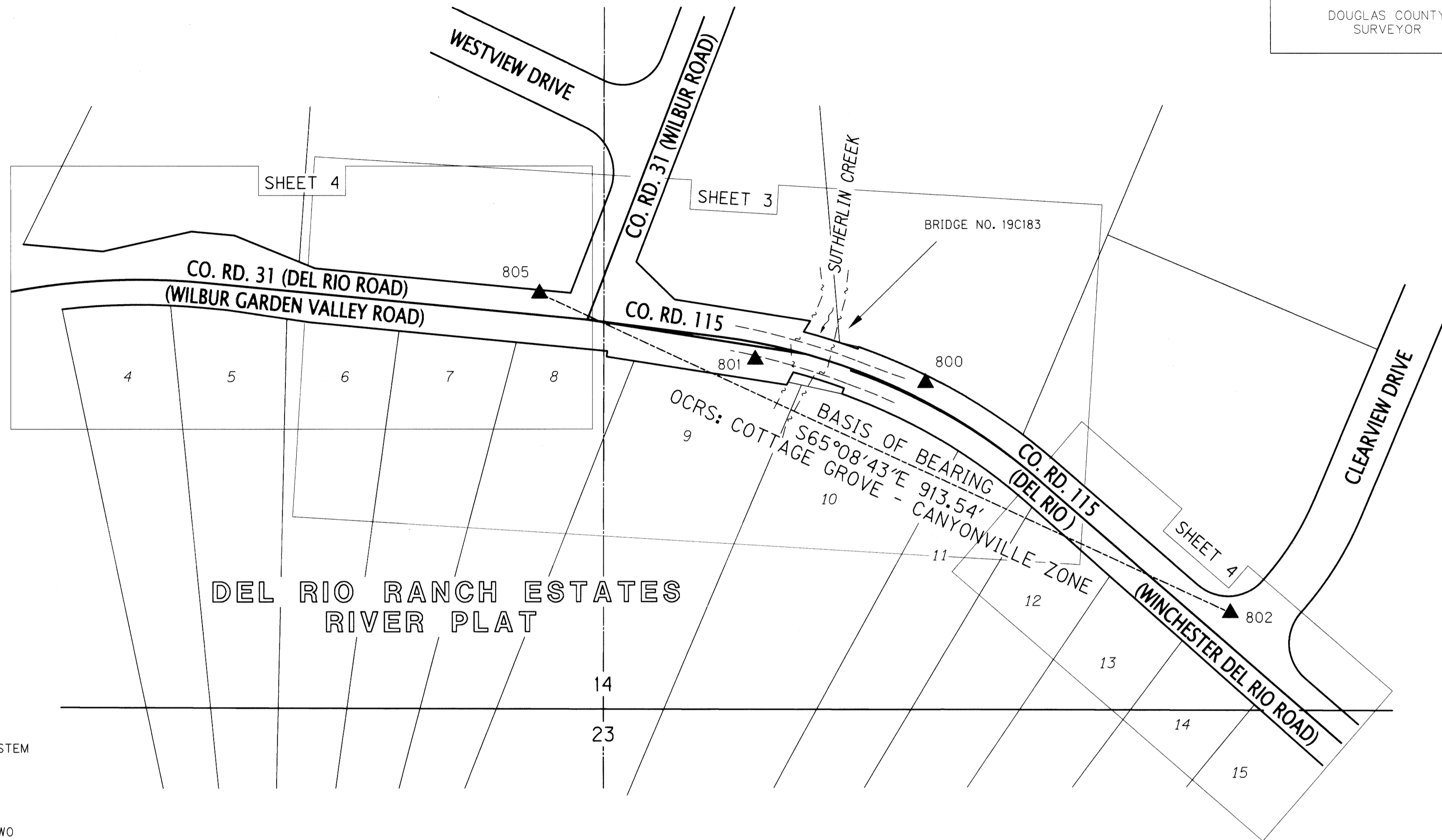


SHEET INDEX

- 1 SHEET LAYOUT DIAGRAM, CONTROL NETWORK, CONTROL NARRATIVE & SHEET INDEX
- 2 NARRATIVE & REFERENCES
- 3-4 SURVEY
- 5 DETAIL AND ADDITIONAL NARRATIVE

SHEET LAYOUT DIAGRAM AND CONTROL NETWORK
1" = 100'

LEGEND	
	SET NETWORK CONTROL POINT NOTED IN TABLE
	RIGHT-OF-WAY
	PROPERTY LINE
	APPROXIMATE SECTION LINE
	APPROXIMATE ONE-QUARTER SECTION LINE
	EDGE OF ASPHALT
	ORDINARY HIGH WATER (OHW)
(XX)	RECORD DATA PER REFERENCE ON SHEET 2



CONTROL NARRATIVE

HORIZONTAL DATUM: NAD83 (2011) EPOCH 2010.00
 VERTICAL DATUM: NAVD88
 COORDINATE SYSTEM: OREGON COORDINATE REFERENCE SYSTEM - COTTAGE GROVE - CANYONVILLE ZONE
 UNITS: INTERNATIONAL FEET

NETWORK CONTROL POINTS (800, 801, 802, 805) WERE SET USING THE ODOT ORGN GNSS NETWORK WITH AT LEAST TWO SETS OF THREE MINUTE OBSERVATIONS USING A TRIMBLE R8 RECEIVER. THEN A NETWORK TRAVERSE WAS RUN THROUGH ALL OF THESE CONTROL POINTS, WITH CROSS TIES TO ADJACENT CONTROL POINTS, USING AN S6 ROBOTIC TOTAL STATION. THE GNSS DERIVED ELEVATION FROM THE ORGN WAS HELD AT POINT 800, AND A LEVEL LOOP WAS RUN THROUGH ALL NETWORK CONTROL POINTS USING A TRIMBLE DINI LEVEL. THE RESULTING DATA WAS ADJUSTED IN TRIMBLE BUSINESS CENTER BY A LEAST SQUARES ADJUSTMENT.

BASIS OF BEARING:

BEARINGS AND COORDINATES SHOWN HEREON ARE BASED ON THE OREGON COORDINATE REFERENCE SYSTEM - COTTAGE GROVE - CANYONVILLE ZONE. APPLIED TO THE LINE BETWEEN SET CONTROL POINTS NUMBERED 805 TO 802, THIS RESULTED IN A BEARING AND DISTANCE OF S65°08'43"E 913.54'.

NOTES:

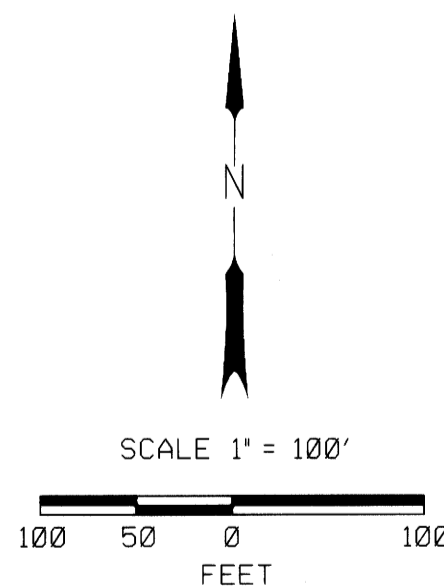
NETWORK CONTROL POINTS WERE SET PRIOR TO JANUARY 1, 2020 WHILE WE WERE STILL OPERATING AS "OBEC". AS OF JANUARY 1, 2020 WE BECAME KNOWN AS "DOWL".

NETWORK CONTROL POINTS FOR THIS SURVEY WERE NOT SET ON AND DO NOT REPRESENT PROPERTY LINES OR RIGHT OF WAY LINES AND ARE INTENDED FOR THE USE OF ODOT AND DOWL IN SUPPORT OF CURRENT AND FUTURE PROJECTS. IT IS NOT THE INTENT OF ODOT OR DOWL TO PERPETUATE THESE CONTROL POINTS AS MONUMENTS.

NETWORK CONTROL POINT TABLE

PT ID	OCRS NORTHING	OCRS EASTING	NAVD 88 ELEVATION	DATE	DESCRIPTION
800	171096.79	152865.54	429.42	1/15/2020	5/8" X 30" IR W/OPC "OBEC CONTROL", SET FLUSH
801	171125.25	152661.27	428.18	1/15/2020	5/8" X 30" IR W/OPC "OBEC CONTROL", SET FLUSH
802	170820.77	153231.08	431.41	1/15/2020	5/8" X 30" IR W/OPC "OBEC CONTROL", SET FLUSH
805	171204.75	152402.15	429.96	1/15/2020	5/8" X 30" IR W/OPC "OBEC CONTROL", SET FLUSH

- IR = IRON ROD
- OCRS = OREGON COORDINATE REFERENCE SYSTEM
- OPC = ORANGE PLASTIC CAP
- W/ = WITH



REGISTERED PROFESSIONAL LAND SURVEYOR

OREGON
MAY 12, 2011
ANDREW JOSEPH SILBERNAGEL
#79198

RENEWS: JUNE 30, 2022
SIGNED: 12/23/2020

APPROVED BY:
A. SILBERNAGEL
DOWL SURVEY MANAGER

920 COUNTRY CLUB ROAD, SUITE 100B
EUGENE, OREGON 97401
541-683-6090

OREGON DEPARTMENT OF TRANSPORTATION
 HORIZONTAL CONTROL,
 RECOVERY AND RETRACEMENT SURVEY
 SOUTHERN OREGON SEISMIC BRIDGE RETROFIT
 (PHASE 2) PROJECT
 SUTHERLIN CREEK SITE

ODOT REGION 3 DOUGLAS COUNTY DECEMBER 2020
 3500 NW STEWART PARKWAY 1" = 100'
 ROSEBURG, OR 97470 KEY NO. 22290 SHEET 1 OF 5

DESIGNED: R. BEAUDUY PROJ. NO. 0019-0593
 DRAWN: SMG CHK'D: J. COLTON

FILE NAME: S_K21296_crr_01_Site 13.dgn

SW 1/4 SECTION 14, SE 1/4 SECTION 14,
NE 1/4 SECTION 23
TOWNSHIP 26 SOUTH, RANGE 6 WEST, W.M.

FILED
Date: 1-5-2021 By: Di
This survey consists of:
Map: Co. Rd. #115 5 pgs
Narrative: _____
Corner Rpt: _____
DOUGLAS COUNTY SURVEYOR

01580179