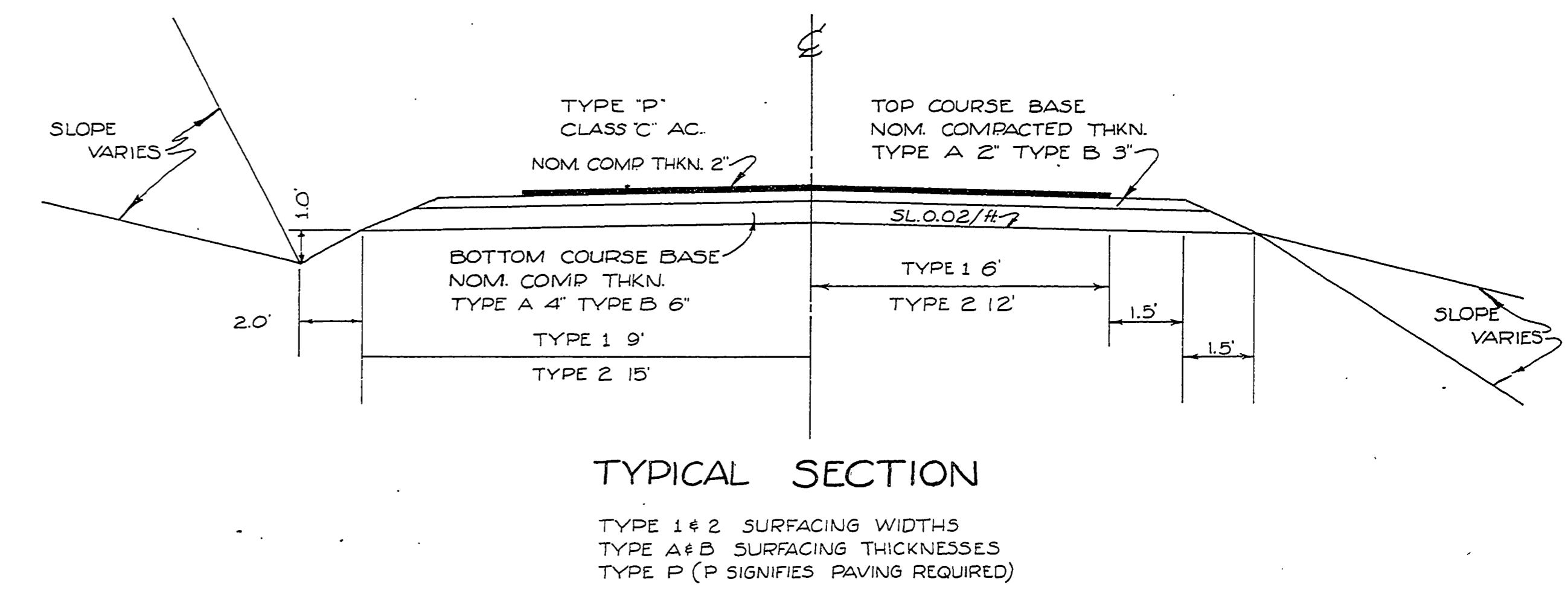
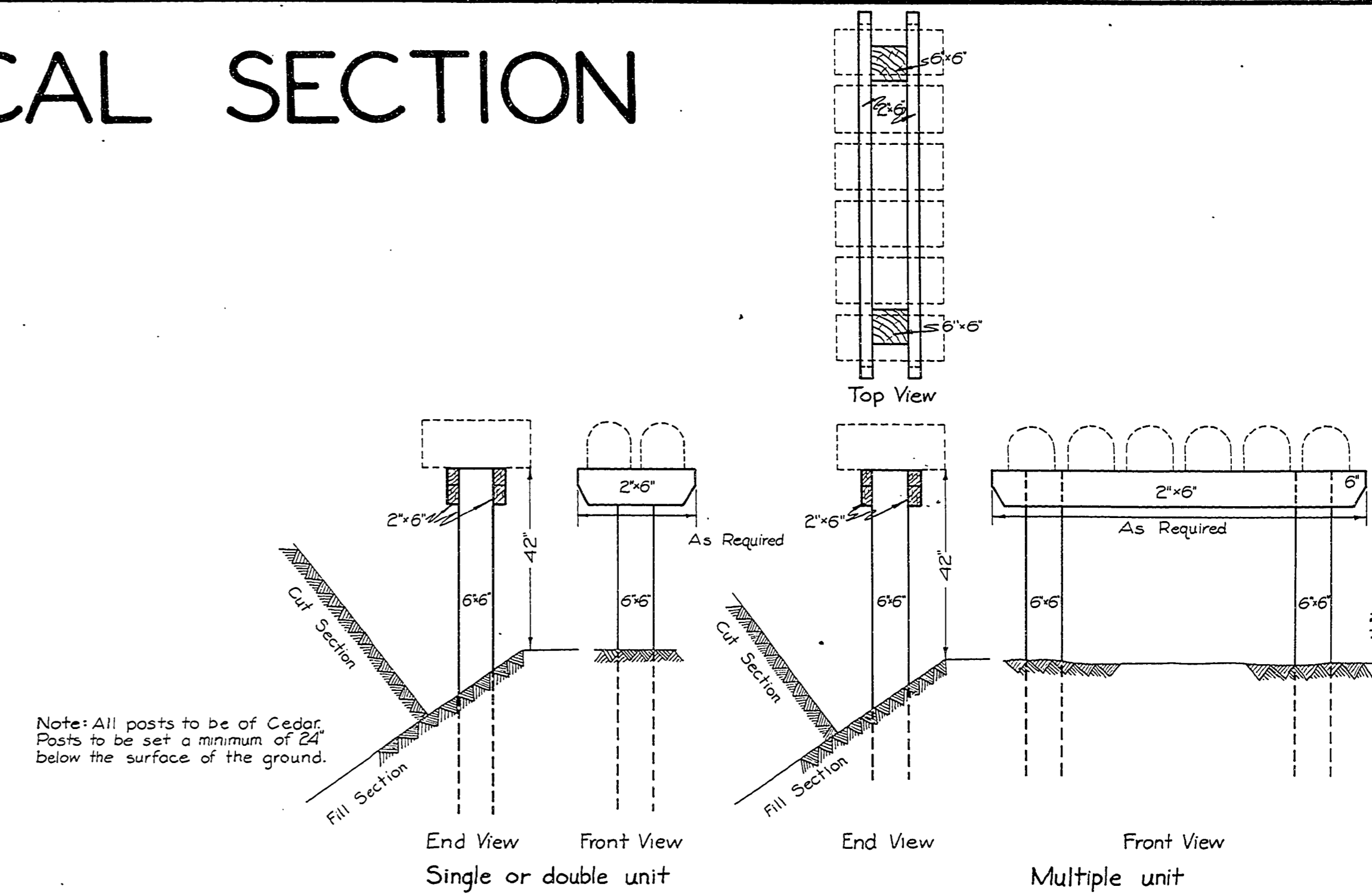


# PIPE LIST & DRIVEWAY TYPICAL SECTION

STATION	DIAMETER	LENGTH	MATERIALS						REMARKS STRUTTED, END TREATMENT IMPERFECT TRENCH, ETC.	
			ALUMINUM			GALV. STEEL				CONCRETE
			ANNULAR CORR. GAGE	HELICAL CORR.	ASPHALT COATED	ANNULAR CORR. GAGE	HELICAL CORR.	ASPHALT COATED		
14+00	12"	36'				16	16	✓		
15+25 - 24+00	8"	875'				"	"	✓	PERFORATED PIPE	
16+50	18"	40'						✓		
30+25	36"x22"	87'				14		✓	ARCH TYPE	
36+00	18"	36'				16	16	✓		
36+00	36"x22"	36'				14		✓	ARCH TYPE	
37+00	12"	40'				16	16	✓		
37+40	43"x27"	48'				12		✓	ARCH TYPE	
41+00	18"	42'				16	16	✓		
44+20	18"	32'				"	"	✓		
48+70	18"	42'				"	"	✓		
50+05	12"	42'				"	"	✓		
49+80	24"	42'				"	"	✓		
57+60	12"	42'				"	"	✓		
60+00	12"	42'				"	"	✓		
60+70	18"	50'				"	"	✓		
63+45	12"	33'				"	"	✓		
64+50	12"	39'				"	"	✓		
66+95	72"x44"	75'				8		✓	ARCH PIPE	
67+10	12"	36'				16	16	✓		
75+30	12"	33'				"	"	✓		
75+50	18"	44'				"	"	✓		



Job Name WINCHESTER-DEL RIO  
 Job Number 115  
 Date MARCH 1969 Sht. 3 of 6  
 Douglas County Road Dept  
 Standard Pipe List &  
 Rural Driveway  
 Date December 7, 1967  
 GEORGE E. GRUBB County Engineer

Dec. 1967  
 Co. Rd #115 Sht. 3 of 6 (42)

0000SUMM