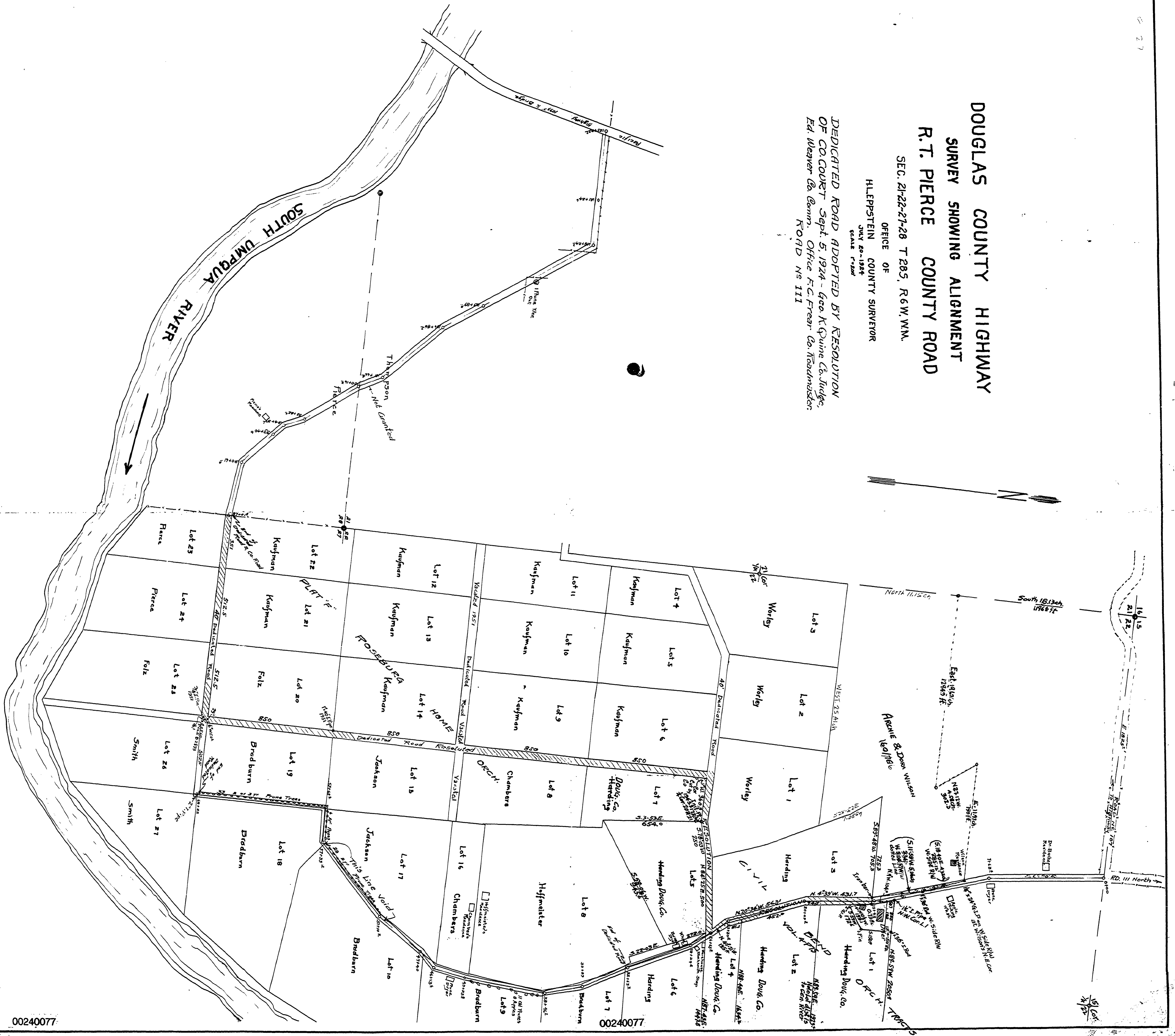


# DOUGLAS COUNTY HIGHWAY SURVEY SHOWING ALIGNMENT R. T. PIERCE COUNTY ROAD

SEC. 21-22-27-28 T. 28S, R. 6W. W.M.

OFFICE OF  
HLEPPSTEIN COUNTY SURVEYOR  
JULY 20, 1924  
SCALE 1"=200'

DEDICATED ROAD ADOPTED BY RESOLUTION  
OF CO. COURT Sept. 5, 1924 - Geo. K. Quine Co. Judge,  
Ed. Weaver Co. Comm. Office F.C. Frear Co. Roadmaster.  
ROAD No 111



C-111

00240077

00240077